



本广告资料由正火电气印制，仅用于说明本系列产品的相关信息。正火电气随时可能因技术升级采用更新的生产工艺而改进本手册有关内容，或对本手册印刷错误及不准确的信息时进行必要的改进和更改，恕不另行通知。商家订货时请随时联系本公司，以证实有关信息。

浙江正火电气股份有限公司 ZHEJIANG ZNFO ELECTRIC CO., LTD.

公司地址：温州柳市新光工业区

电话：0577-61715222 61715322

传真：0577-61715922

Http: www.chzhct.com www.znfo.cn

全国统一客户服务热线 400-6606-021



关注正火电气微信服务号，
了解更多资讯...

Znfo 正火股份

专注 工控领域35年

**2023版
交流接触器 | 选型手册**

AC CONTACTOR
IECTOTYPE MANUAL



浙江正火电气股份有限公司
ZHEJIANG ZNFO ELECTRIC CO., LTD.

正火股份

愿 景：一流的员工创客平台

目 标：中国中小企业创新标杆

使 命：使电力控制保护更安全

价值观：让客户创造价值，让员工创造平台，让股东创造财富



品牌解读

Znfo 正火®

“正”代表我们的价值观；“火”光明与未来持续推动开拓创新引领市场成就经典不断追求智慧来实现绿色电气未来.....

CHZHCT®

CHZHCT: 中国正火，创造未来；“CH”指CHINA(中国)缩写，“Z”是正，“H”是火拼音的第一个字母，“C”是Create(创造)的缩写，“T”是Tmorrow(未来)的缩写。

tzd®

正火股份旗下高端定制品牌

正大线圈®

正大线圈是正火股份旗下的线圈品牌，是以生产加工、销售为一体的线圈产销企业，其品牌定位是“成为具有竞争力的线圈供应商”。

正大触头®

正大触头是正火股份旗下的触头品牌。是完全按照客户需求进行生产的产品，是在国内进行广泛的市场调研，通过客户的需求进行细分分析，因此其总体的性价比均是其它品牌无法比拟的.....



触头王®

触头王品牌的目标定位是“创触头元件行业领先品牌”

正火简介 Company Profile Of Znfo

正火股份是一家以工业控制电器为主导产品，以电力自动化等为辅，集制造、贸易、科研于一体的产销企业。

正火股份在上海和温州建有两大生产基地，拥有上海正火电气有限公司，浙江正火电气股份有限公司，大连二开开关有限公司等10多家控参股企业，50多家协作企业。

作为一家专业针对工控开关元件创新研发、生产为一体的供应商，产品广泛应用于起重、电力、工控等行业的重点工程，以最高的品质、安全性最强的解决方案和完善的售后服务来赢得广大用户一致好评的口碑。

公司发扬“同心、敬业、创新、争光”的企业精神，以“产业科技化、产品定制化、管理数字化，”为发展理念，以敏锐的目光，昂扬的姿态，面向世界，挑战新时代新未来。

As a production and marketing enterprise integrating manufacturing, trading and scientific research, ZNFO takes industrial control appliances as the leading products and electric automation products as the auxiliary products.

ZNFO has two production bases, respectively in Shanghai and Wenzhou, and owns more than 10 controlling and shareholding enterprises and more than 50 cooperative enterprises, including Shanghai CHZHCT Electric Co., Ltd., Zhejiang ZNFO Electric Co., Ltd. and Dalian Toperkai Switch Co., Ltd.

As a supplier specializing in innovative R&D and production of industrial control switch components, with products widely used in key projects in the fields of lifting, electric power, industrial control, etc., ZNFO has won unanimous praise from users by virtue of the highest quality, the most secure solutions and the perfect after-sales services.

In the spirit of “Unity, Dedication, Innovation, Glory” and with the development idea of “Industrial Technicalization, Products Customization, Management Digitization”, ZNFO faces the world and challenges the new era and future with keen eyes and spirited attitude.

发展历史 Development History

创客阶段

2017-2027年

Maker stage
(2017-2027)

2018年浙江正火电气有限公司晋升为浙江正火电气股份有限公司，荣获安全生产标准化企业。
2019年荣获浙江省科技型中小企业、AAA级信用企业、荣获多项产品计算机软件著作权及专利证书。
2020年创新“正火超越者”系列产品10项、专利2项。
2021-2022年创新“正火绿创”系列20项，专利2项。
2022年-2027年计划创新100项以上、创客500位员工。

In 2018, Zhejiang CHZHCT Electric Co., Ltd. was promoted as Zhejiang ZNFO Electric Co., Ltd. and was awarded the Safe Production Standardization Enterprise.
In 2019, the Company was awarded Zhejiang Provincial Small and Medium-Sized Sci-tech Enterprise and AAA Credit Enterprise, with many products awarded the copyright of computer software and the patent certificate.
In 2020, the Company made innovations of 10 series products of “ZNFO Transcender” and was awarded 2 patents.
From 2021 to 2022, the Company made innovations of 20 series products of “ZNFO Green Innovation” and was awarded 2 patents.
From 2022 to 2027, the Company aims to make innovations of more than 100 items and increase employees by 500 persons.

提升阶段

2007-2017年

Promotion stage
(2007-2017)

2011年温州正火电气有限公司晋升为“浙江正火电气有限公司”，投产行程开关、限位开关、起重开关、输送机综合智能保护装置系统等产品。
2012年荣获“电气行业十大创新企业”。
2013年荣获“中国电气行业十大评选——十大知名品牌”，聚焦两大平台建设——自主创客平台和赋能创客平台。
2016年推出“正火特制”高端工控产品，同年并通过“ISO9001/14001/18001”质量、环境、职业健康安全管理体系认证。
2017年荣获“正火特制”7项3C证书、“辅助开关”2项专利。

In 2011, Wenzhou CHZHCT Electric Co., Ltd. was promoted as Zhejiang CHZHCT Electric Co., Ltd., with travel switches, limit switches, crane switches and comprehensive intelligent protection device systems for conveyors, etc. put into operation.
In 2012, the Company was rated as one of the “Top Ten Innovative Enterprises in Electrical Industry”.
In 2013, the Company was listed in “Top Ten Awards of China’s Electric Industry - Top Ten Famous Brands”, and focused on the construction of the independent maker platform and the empowerment maker platform.
In 2016, the Company launched the high-end industrial control products of “TAND” series, and passed the certification of “ISO9001/14001/18001” Quality, Environment and Occupation Health Safety Management Systems.
In 2017, the Company won seven 3C certificates for “TAND” products and 2 patents for “auxiliary switches”.

发展阶段

1997-2007年

Development stage
(1997-2007)

2002年“乐清新光冲件配套厂”更名为“乐清市正大银触头厂”。
2003年通过ISO9001质量体系认证，同年获得市质量技术监督局颁发的质量保证能力认可证书。
2005年投产高低压线圈、凸轮触头总成、辅助开关及全套配件。
2006年“乐清正大”申报更名为“温州正火电气有限公司”，并在上海成立“上海正火电气有限公司”。
通过ISO9001转版认证、部分产品通过CE、CCC、ROSH认证。

In 2002, “Yueqing Xinguang Supporting Stamping Parts Factory” was renamed as “Yueqing Zhengda Silver Contact Tips Factory”.
In 2003, the Company passed the certification of ISO9001 Quality System, and was awarded the quality assurance ability accreditation certificate issued by the Municipal Bureau of Quality and Technical Supervision.
In 2005, the Company put high-voltage and low-voltage coils, cam contact assemblies, auxiliary switches and complete sets of accessories into production.
In 2006, “Yueqing Zhengda” declared that it was renamed as “Wenzhou CHZHCT Electric Co., Ltd.” and established “Shanghai CHZHCT Electric Co., Ltd.” in Shanghai.
In the same year, the Company passed the certification of the updated ISO9001 system, and some products of the Company passed CE, CCC and ROSH certifications.

创业阶段

1987-1997年

Entrepreneurial stage
(1987-1997)

1987年创立“柳市低压电气配件厂”，本着“精益求精”的精神，依靠质量和信誉求得生存。
1990年更名为“乐清市新光冲件配套厂”。
1995年投资10万元引进冲压件、挤压机等设备，发展奠定了“正火”基业。

Founded in 1987, in the spirit of “Keeping Improving”, “Liushi Low-voltage Electrical Accessories Factory” sought survival with quality and reputation.
In 1990, the Company was renamed as “Yueqing Xinguang Supporting Stamping Parts Factory”.
In 1995, the Company invested 100,000 yuan to introduce stamping parts, extruders and other kinds of equipment, which laid the foundation of “ZNFO”.

目录 CONTENTS

CJSt 正火特制系列迷你型交流接触器 ZNFO special series mini AC contactor	01	CJX2-N 传统交流接触器 traditional AC contactor	36
CJX2t 正火特制系列交流接触器 ZNFO special series AC contactor	03	CJX2-F 传统交流接触器 traditional AC contactor	39
CJX2t-F 正火特制系列大电流交流接触器 ZNFO special series high-current AC contactor	06	CJX2-D 传统交流接触器 traditional AC contactor	42
CJX2t-MEAD 正火特制系列防晃电交流接触器 ZNFO special series anti-voltage sag AC contactor	09	CJX1 传统交流接触器 traditional AC contactor	45
CJ19t 正火特制系列切换电容器接触器 ZNFO special series capacitor changeover contactor	11	CJX8 传统交流接触器 traditional AC contactor	48
CJ20t 正火特制系列交流接触器 ZNFO special series AC contactor	14	CJT1 传统交流接触器 traditional AC contactor	52
CJS0t 正火特制系列交流接触器 ZNFO special series AC contactor	16	CJ12 传统交流接触器 traditional AC contactor	55
ZHCt 正火绿创系列交流接触器 ZNFO Green Innovation series AC contactor	19	CJ20 交流接触器 AC contactor	58
ZHC 正火超越者系列交流接触器 ZNFO Transcender series AC contactor	25	CJ40 交流接触器 AC contactor	60
ZHC20 正火超越者系列交流接触器 ZNFO Transcender series AC contactor	28	CJ19 切换电容器接触器 capacitor changeover contactor	63
ZHC40 正火超越者系列交流接触器 ZNFO Transcender series AC contactor	30		
CJX2 传统交流接触器 traditional AC contactor	33		

● 小型控制箱、电路板插针式专用产品

Pin type product special for small control boxes and circuit boards



插针式

插针式

概述 / Overview

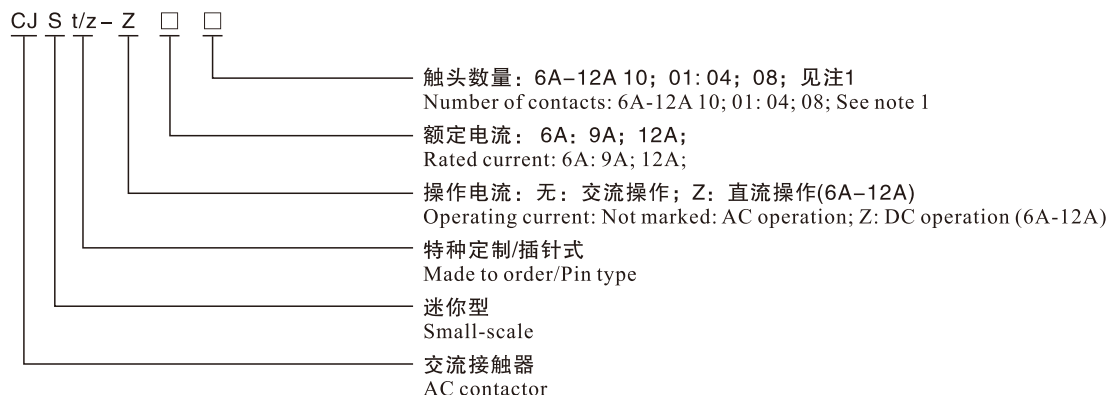
CJSt系列交流接触器(以下简称接触器), 主要用于交流50Hz或60Hz, 额定工作电压至690V, 额定工作电流至9A的电路中, 供远距离接通和分断电路之用, 并可与适当的热继电器组成电磁起动器, 以保护可能发生操作过负荷的电路。

符合标准: GB/T-14048.4-2020, IEC60947-1(1999), IEC 947-4-1。

CJSt series AC contactor (hereinafter referred to as the contactor) is mainly used in the circuits with the frequency of AC 50Hz or 60Hz, the rated working voltage of up to 690V, and the rated working current of up to 9A for connecting and breaking circuits remotely and working with the appropriate thermal relay to form the electromagnetic starter to protect the circuits that may be overloaded.

Executive standards: GB/T-14048.4-2020, IEC60947-1(1999), IEC 947-4-1.

型号及含义 / Type and meaning



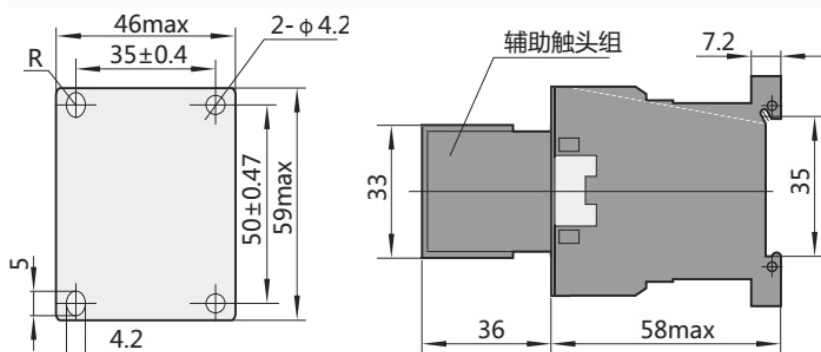
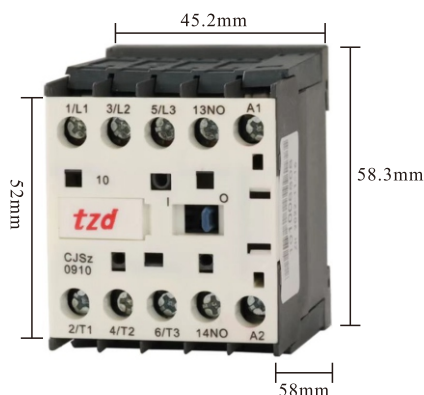
注1:
6A-12A以辅助触头的形式;
10表示三常开主触头, 一常开辅助触头;
01表示三常开主触头, 一常闭辅助触头。

Note 1:
6A-12A adopts the number of auxiliary contacts.
10 means three normally open main contacts and one normally open auxiliary contact;
01 means three normally open main contacts and one normally closed auxiliary contact;

正常工作条件和安装条件 / Normal working conditions and installation conditions

- ☐ 周围空气温度为： $-5^{\circ}\text{C}\sim+40^{\circ}\text{C}$ ，24小时内其平均值不超过 $+35^{\circ}\text{C}$ ；
- ☐ 海拔高度：不超过2000m；
- ☐ 大气条件：最高温度 $+40^{\circ}\text{C}$ ，时空气的相对湿度不超过50%；在较低温度下可以允许有较高的相对湿度，例如 20°C 。时达90%。对由于温度变化偶尔产生的凝露应采取特殊的措施；
- ☐ 污染等级：3级；
- ☐ 安装类别：III类；
- ☐ 安装条件：安装面与垂直面倾斜度不大于 $\pm 30^{\circ}$ ；
- ☐ 冲击振动：产品应安装和使用在无显著摇动、冲击和振动的地方。
- ☐ The ambient air temperature should be $-5^{\circ}\text{C}\sim+40^{\circ}\text{C}$, with the average temperature of no higher than $+35^{\circ}\text{C}$ within 24 hours;
- ☐ Altitude: not higher than 2000m;
- ☐ Atmospheric conditions: when the highest temperature is $+40^{\circ}\text{C}$, the relative humidity of the air should not be higher than 50%; A higher relative humidity is allowed at a lower temperature, such as 90% under 20°C . Special measures should be taken for occasional condensation due to temperature change;
- ☐ Pollution level: level 3;
- ☐ Installation category: category III;
- ☐ Installation condition: the inclination between the installation surface and the vertical plane should not exceed $\pm 30^{\circ}$;
- ☐ Impact vibration: the product should be installed and used in a place without obvious shaking, impact and vibration.

外形及安装尺寸 / Outline and installation dimensions



● 机床控制箱、烫台首选产品

Preferred product for machine tool control boxes and ironing tables



概述 / Overview

CJX2t系列交流接触器(以下简称接触器), 主要用于交流50Hz或60Hz,电压至690V, 在AC-3、400(380)V使用类别下额定工作电流至95A的电路中, 供远距离接通和分断电路、频繁地起动和控制交流电动机之用, 并可与适当的热继电器组成电磁起动器以保护可能发生操作过负荷的电路。

符合标准: GB/T-14048.4-2020,IEC60947-1(1999), IEC 947-4-1。

CJX2t series AC contactor (hereinafter referred to as the contactor) is mainly used in the circuits with the frequency of AC 50Hz or 60Hz, the voltage of up to 690V, and the rated working current of up to 95A under the use categories of AC-3 and 400(380)V for connecting and breaking circuits remotely, frequently starting and controlling AC motors, and working with the appropriate thermal relay to form the electromagnetic starter to protect the circuits that may be overloaded.

Executive standards: GB/T-14048.4-2020,IEC60947-1(1999), IEC 947-4-1.

型号及含义 / Type and meaning

CJX2 t - Z □ □ □ - □

- 特殊用途: G: 高原型(09A-95A); TH: 防尘型
Special purpose: G: plateau type (09A-95A); TH: dustproof type
- 极数: 115A-800A 3: 3极(不标注); 4: 4极
Number of poles: 115A-800A, 3: 3 poles (not marked); 4: 4 poles
- 触头数量: 09A-95A 10; 01: 11: 04; 08; 见注1
Number of contacts: 09A-95A 10; 01: 11: 04; 08; See note 1
- 额定电流: AC-3 09: 9A; 12: 12A; 18: 18A; 25: 25A;
32: 32A; 40: 40A; 50: 50A; 65: 65A; 80: 80A; 95: 95A
Rated current: AC-3 09: 9A; 12: 12A; 18: 18A; 25: 25A;
32: 32A; 40: 40A; 50: 50A; 65: 65A; 80: 80A; 95: 95A
- 操作电流: 无: 交流操作; Z: 直流操作(09A-95A)
Operating current: Not marked: AC operation; Z: DC operation (09A-95A)
- 特种定制
Made to order
- 交流接触器
AC contactor

注1:
09A-95A以辅助触头的形式, 115A-800A以极数形式
10表示三常开主触头, 一常开辅助触头 (32A及以下);
01表示三常开主触头, 一常闭辅助触头 (32A及以下);
11表示三常开主触头, 一常开一常闭辅助触头 (40A及以上)。

Note 1:
09A-95A adopts the number of auxiliary contacts, while 115A-800A adopts the number of poles.
10 means three normally open main contacts and one normally open auxiliary contact (32A and below);
01 means three normally open main contacts and one normally closed auxiliary contact (32A and below);
11 means three normally open main contacts, one normally open auxiliary contact and one normally closed auxiliary contact (40A and above).

正常工作条件和安装条件 / Normal working conditions and installation conditions

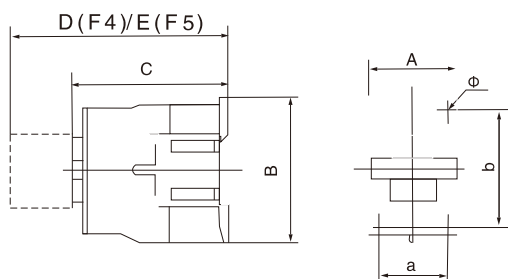
- ☐ 周围空气温度为：-5℃~+40℃，24小时内其平均值不超过+35℃；
- ☐ 海拔高度：不超过2000m；
- ☐ 大气条件：最高温度+40℃，时空气的相对湿度不超过50%；在较低温度下可以允许有较高的相对湿度，例如20℃。时达90%。对由于温度变化偶尔产生的凝露应采取特殊的措施；
- ☐ 污染等级：3级；
- ☐ 安装类别：III类；
- ☐ 安装条件：安装面与垂直面倾斜度不大于±5°；
- ☐ 冲击振动：产品应安装和使用在无显著摇动、冲击和振动的地方。
- ☐ The ambient air temperature should be -5℃~+40℃, with the average temperature of no higher than +35℃ within 24 hours;
- ☐ Altitude: not higher than 2000m;
- ☐ Atmospheric conditions: when the highest temperature is +40℃, the relative humidity of the air should not be higher than 50%; A higher relative humidity is allowed at a lower temperature, such as 90% under 20℃. Special measures should be taken for occasional condensation due to temperature change;
- ☐ Pollution level: level 3;
- ☐ Installation category: category III;
- ☐ Installation condition: the inclination between the installation surface and the vertical plane should not exceed ±5°;
- ☐ Impact vibration: the product should be installed and used in a place without obvious shaking, impact and vibration.

主要参数及技术性能 / Main parameters and technical performance

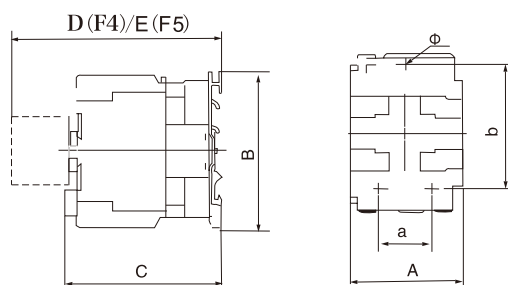
接触器的主要参数及技术性能指标 Main parameters and technical performance indicators of the contactor

型号Type			CJX2t-09	CJX2t-12	CJX2t-18	CJX2t-25	CJX2t-32	CJX2t-40	CJX2t-50	CJX2t-65	CJX2t-80	CJX2t-95
额定工作电流 Rated working current	400(380)V	AC-3	9	12	18	25	32	40	50	65	80	95
		AC-4	3.5	5	7.7	8.5	12	18.5	24	28	37	44
	690(660)V	AC-3	6.6	8.9	12	18	21	34	39	42	49	49
		AC-4	1.5	2	3.8	4.4	7.5	9	12	14	17.3	21.3
约定自由空气发热电流 Conventional free air thermal current			20	20	32	40	50	60	80	80	95	95
额定绝缘电压 Rated insulation voltage			690	690	690	690	690	690	690	690	690	690
可控三相鼠笼 电动机功率(AC-3)kW Controllable three-phase squirrel cage motor power (AC-3) kW		230(220)V	2.2	3	4	5.5	7.5	11	15	18.5	22	25
		400(380)V	4	5.5	7.5	11	15	18.5	22	30	37	45
		690(660)V	5.5	7.5	10	15	18.5	30	37	37	45	45
操作频率(次/h) Operating frequency (times /h)	电寿命机械寿命 Electrical endurance, mechanical endurance	AC-3	1200	1200	1200	1200	600	600	600	600	600	600
		AC-4	300	300	300	300	300	300	300	300	300	300
			3600	3600	3600	3600	3600	3600	3600	3600	3600	3600
电寿命(万次) Electrical endurance (10,000 times)	AC-3		100	100	100	100	80	80	60	60	60	60
	AC-4		20	20	20	20	20	15	15	15	10	10

外形及安装尺寸 / Outline and installation dimensions



CJX2t-09~32外形及安装尺寸
Outline and installation dimensions of CJX2t-09~32



CJX2t-40~95外形及安装尺寸
Outline and installation dimensions of CJX2t-40~95

接触器型号 Contactor type	A max	B max	C max	D max	E max	a	b	Φ
CJX2t-09~12	47	76	82	120.5	140.5	34/35	56/60	4.5
CJX2t-18	47	76	87	125.5	145.5	34/35	50/60	4.5
CJX2t-25	57	86	95	133.5	153.5	40	48	4.5
CJX2t-32	57	86	100	138.5	158.5	40	48	4.5
CJX2t-4011~6511	77	129	116	154.5	174.5	40	105	6.5
CJX2t-4004~6504	84	129	116	154.5	174.5	40	105	6.5
CJX2t-4008~6508	84	129	127	154.5	174.5	40	105	6.5
CJX2t-8011~9511	87	129	127	165.5	185.5	40	105	6.5
CJX2t-8004~9504	96	129	122	160.5	180.5	40	105	6.5
CJX2t-8008~9508	96	129	135	160.5	180.5	40	105	6.5



概述 / Overview

CJX2tF直动式交流接触器主要用于交流50Hz(或60Hz), 额定工作电压至1000V, 额定工作电流至1400A的电力系统中, 远距离接通, 分断电路和起动, 停止、反向及反接制动电动机。

本系列接触器符合标准: GB/T14048.4-2020, IEC60947-1(1999), IEC947-4-1。

本系列接触器有CJX2-F115、150、185、225、265、330、400、500、630、780、1200、1400十二个规格, 其外形和安装尺寸与LC1-D、LC1-F相同。

CJX2t-F115-780接触器还可以作为直流接触器使用。(须和本公司联系)。

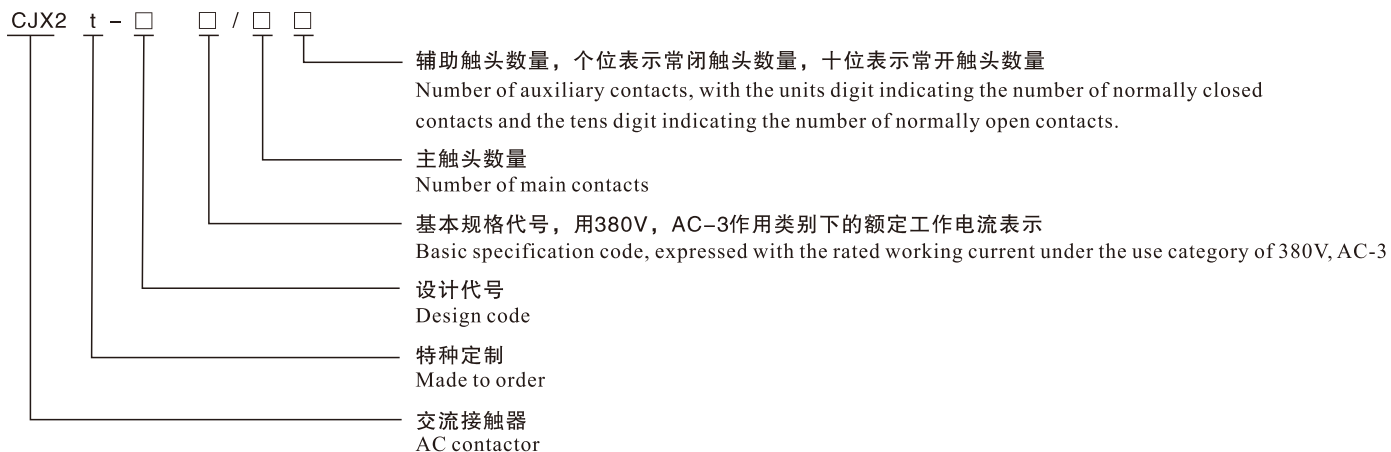
CJX2tF direct-acting AC contactor is mainly used in the electrical power systems with the frequency of AC 50Hz (or 60Hz), the rated working voltage of up to 1000V, and the rated working current of up to 1400A for remote connection and breaking of circuits, as well as starting, stopping, reversing and reverse connection of brake motors.

Executive standards: GB/T14048.4-2020, IEC60947-1(1999), IEC947-4-1.

There are 12 specifications for this series of contactors, including CJX2-F115, 150, 185, 225, 265, 330, 400, 500, 630, 780, 1200 and 1400. The outline and installation dimensions of this series of contactors are the same as those of LC1-D and LC1-F.

CJX2t-F115-780 contactors can also be used as DC contactors. (Please contact the Company).

型号及含义 / Type and meaning



产品结构特点 / Structural features of the product

- ☐ 结构简单紧凑，独特新颖，功能模块化，组装积木化。
- ☐ 线圈采用塑料封装，工艺先进，外型美观，绝缘强度高，机械强度高。
- ☐ CJX2t-F115 ~ 780-1200-1400线圈和静铁芯组成抽屉，只需按下按钮就可装入或抽出，维修方便。
- ☐ 灭弧罩采用高强度塑料压制而成，机械强度高，灭弧性能好，且采用锁杆旋转压缩弹簧固定，方便可靠。
- ☐ 辅助触头数量多且更换方便，CJX2t-F115 ~ 780 ~ 1200 ~ 1400接触器线圈上带有一个专用辅助触头供自锁转换直流控制，还可加装两个辅助触头组共8对辅助触头，辅助触头组安装不用螺钉固定，只要沿导轨，一推，听到“咔嚓”一声即可。如果需用空气延时头时，可直接用其换下辅助触头组即可。
- ☐ 接触器节电效果明显。CJX2t-F400-780 ~ 1200-1400为交流输入直流控制。
- ☐ 接触器机械联锁简单可靠，可使两台接器横向联锁，CJX2t-F115 ~ 630还可实现两台接触器竖向联锁和三台接触器的竖向互相联锁。
- ☐ It has simple, compact, new and unique, with modular function and assembly modularization.
- ☐ The coil is packaged in plastic, with advanced technology, beautiful appearance, good insulation strength and high mechanical strength.
- ☐ For CJX2t-F115 ~ 780-1200-1400, coil and static iron core form a drawer for pushing in and pulling out by pressing the button and thus for easy repair.
- ☐ The arc extinguishing chamber is made of high-strength plastic, which has high mechanical strength and good arc extinguishing performance, and is fixed by locking bar rotating compression spring, which is convenient and reliable.
- ☐ There are many auxiliary contacts, which are replaced easily. For CJX2t-F115~780~1200~1400 contactors, the coil is provided with a special auxiliary contact for DC control of self-locking conversion. It is allowed to additionally install two auxiliary contactor sets so that there are 8 pairs of auxiliary contactors. The auxiliary contactor sets are installed only along the guide rail, with no need of screws. Give it a push, when you hear a click, the auxiliary contactor sets are installed successfully. If the air damping type time relay is required, it can be used directly to replace the auxiliary contact set.
- ☐ The contactor can save electricity significantly. CJX2t-F400-780~1200-1400 features AC input and DC control.
- ☐ The mechanical interlocking of the contactor is simple and reliable. Two contactors can be interlocked horizontally. CJX2t-F115 ~ 630 contactors can also realize vertical interlocking of two contactors and vertical interlocking between three contactors.

主要参数及技术性能 / Main parameters and technical performance

- ☐ 动作性能：吸合电压为85% ~ 110%Us，释放电压对于交流线圈为20% ~ 75%Us，对于直流线圈为10% ~ 75%Us。
- ☐ 圈的控制电压：CJX2t-F115 ~ 780 ~ 1400 交流127,220,380V 直流110,220V，也可供其它任何电压的线圈。
- ☐ 接触器适用的短路保护电器推荐为NT系列熔断器
- ☐ Action performance: the pull-in voltage is 85% ~ 110% Us; the release voltage is 20% ~ 75% Us for AC coils and 10% ~ 75% Us for DC coils.
- ☐ Control voltage of coils: AC 127, 220, 380V and DC 110, 220V for CJX2t-F115 ~ 780 ~ 1400; Coils of any other voltage are also supported.
- ☐ NT series fuses are recommended as the suitable short-circuit protection appliances of the contactor.

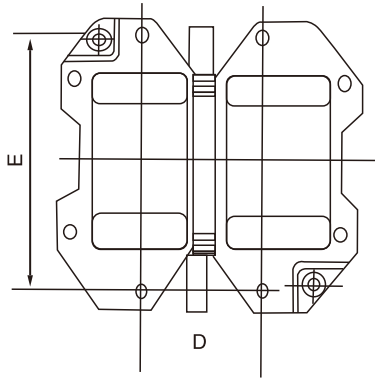
接触器的主要参数及技术性能指标 Main parameters and technical performance indicators of the contactor

型号 Type	CJX2t-F115	CJX2t-F150	CJX2t-F185	CJX2t-F225	CJX2t-F265	CJX2t-F330	CJX2t-F400	CJX2t-F500	CJX2t-F630	CJX2t-F780
额定绝缘电压 Rated insulation voltage	1000									
约定发热电流 Conventional thermal current	200	250	275	315	350	450	500	700	800	800
AC-3使用类别下工作电流 Working current under the use category of AC-3	380V	115	150	185	225	265	330	400	500	780
	660V	86	107	118	135	170	225	305	355	630
	1000V	46	60	71	90	100	132	115	200	312
AC-3使用类别下控制电动机功率 Control motor power under the use category of AC-3	380V	55	75	90	110	132	160	200	250	450
	660V	80	100	110	129	160	220	280	335	475
	1000V	65	65	100	100	147	160	185	335	450

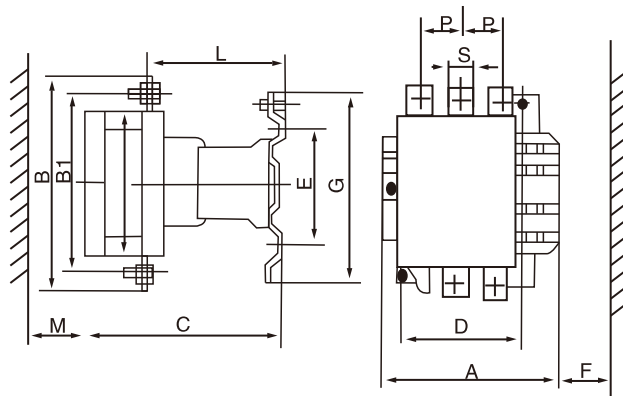
外形及安装尺寸 / Outline and installation dimensions

注: 1)M为飞弧距离; 2)F为更换线圈所需空间。

Notes: 1) M is the flashover distance; 2) F is the space required for replacement of coils.



CJX2t-F400~500外形尺寸 图3
Outline dimensions of CJX2t-F400~500 Fig. 3

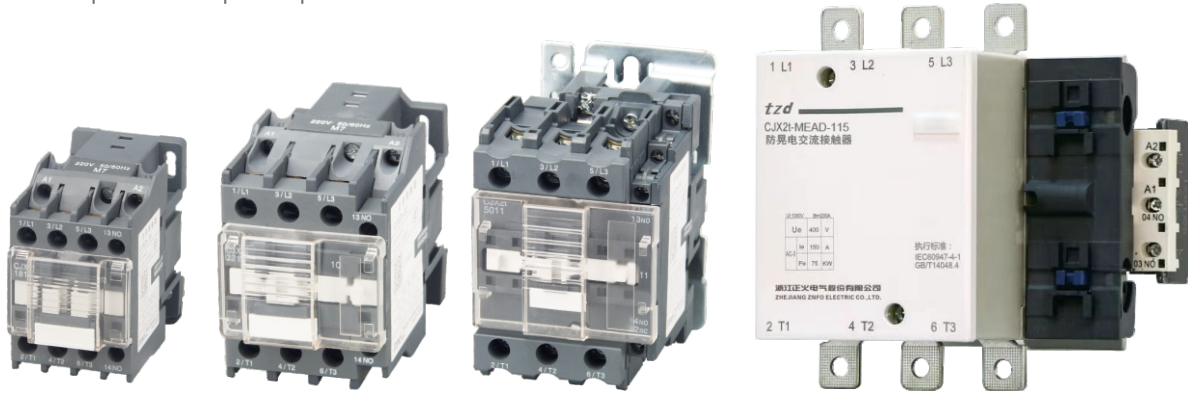


CJX2t-F630外形及安装尺寸 图4
Outline and installation dimensions of CJX2t-F630 Fig. 4

型号 Type	极数	A	B	C	D	E	F ²⁾	G	H	M ¹⁾	P	S	B1	安装螺钉
CJX2t-F115	3极	166.5	162	171	80	113	131	137	124	40	37	15	147	M6
	4极	200.5	162	171	80	113	131	137	124	40	37	15	147	M6
CJX2t-F150	3极	166.5	172	171	80	113	131	137	124	40	40	20	150	M6
	4极	200.5	172	171	80	113	131	137	124	40	40	20	150	M6
CJX2t-F185	3极	168.5	174	181	80	113	131	137	137	40	40	20	154	M6
	4极	208.5	174	181	80	113	131	137	137	40	40	20	154	M6
CJX2t-F225	3极	168.5	197	181	80	113	131	137	137	50	48	25	172	M6
	4极	208.5	197	181	80	113	131	137	137	50	48	25	172	M6
CJX2t-F265	3极	201.5	203	213	96	113	147	145	147	50	48	25	178	M6
	4极	224.5	203	213	96	113	147	145	147	50	48	25	178	M6
CJX2t-F330	3极	213	209	219	96	113	147	145	158	60	48	25	181	M6
	4极	261	209	219	96	113	147	145	158	60	48	25	181	M6
CJX2t-F400	3极	213	209	219	80	175	119	209	158	60	48	25	181	M8
	4极	261	209	219	80	175	119	209	158	60	48	25	181	M8
CJX2t-F500	3极	233	238	232	80	175	141	209	158	70	55	30	208	M8
	4极	288	238	232	140	175	141	209	158	70	55	30	208	M8
CJX2t-F630	3极	309	225	225	180	185	181	280	202	80	40	40	264	M10
	4极	389	225	225	240	185	181	280	202	80	40	40	264	M10

● 电厂首选产品

Preferred product for power plants



概述 / Overview

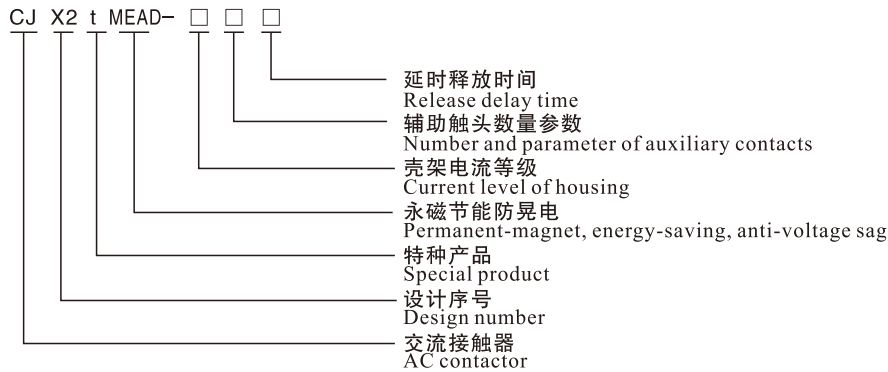
CJX2t-MEAD系列防晃电交流接触器(以下简称接触器),适用于交流50/60HZ、额定工作电压230/400V、额定绝缘电压690V%额定工作电流至630A 的电路中。供远距离接通和分断电路之用,对于要求连续性生产的工厂企业,在生产过程中,如果遇到供电系统遭受雷击或短路故障后、重合闸时的瞬间失 压、失电(俗称晃电)情况时,本接触器在设定延时时间内能做到规避晃电,保持接触器不脱扣,从而达到保持连续生产不停机的目的。如在正常断电操作 停机时接触器则能立即脱扣不延时,确保生产设备立即有效停机。

CJX2t-MEAD series anti-voltage sag AC contactor (hereinafter referred to as the contactor) is mainly used in the circuits with the frequency of 50/60HZ, the rated working voltage of 230/400V, the rated insulation voltage of 690V and the rated working current of up to 630A for connecting and breaking circuits remotely. For factories and enterprises that require continuous production, there may be momentary loss of voltage or power at the time of reclosing after the power supply system suffers from the lightning strike or a short circuit fault in the production process. Such factories and enterprises may use the contactor to avoid this problem and prevent the contactor from tripping within the set delay time, and thus achieve the purpose of continuous production without stopping. In the case of normal power off, the contactor can trip immediately without delay to ensure that the production equipment is shut down immediately and effectively.

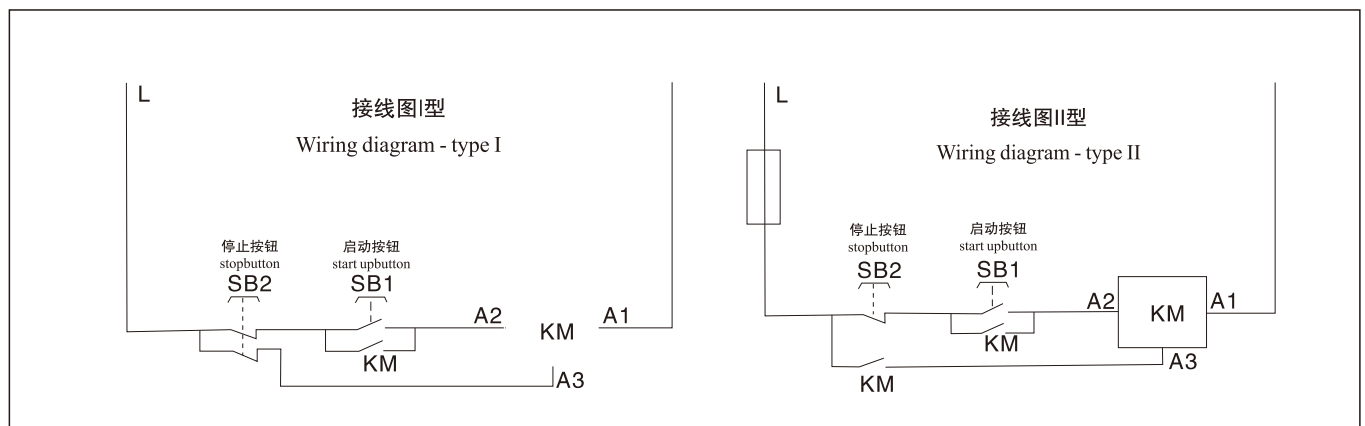
正常工作条件与安装条件 / Normal working conditions and installation conditions

- ☐ 环境温度: $-25^{\circ}\text{C} \sim +40^{\circ}\text{C}$, 24 小时内平均温度不操过 30°C 。
- ☐ 气候条件: 气温在 $+40^{\circ}\text{C}$ 或以上时, 相对平均湿度不超过50%。在常温($+30^{\circ}\text{C}$)以下时, 相对平均湿度不操过80%。最湿月的月平均最低温度不超过 25°C , 且最大湿度不超过90%。并考虑因温度变化发生在产品上的凝露。
- ☐ 海拔高度: 不超过 2000 米。
- ☐ 污染等级: 3 级。
- ☐ 安装类别: III 类。
- ☐ 冲击振动: 产品应安装在显著摇动、冲击和振动的地方。
- ☐ 磁场环境: 相对磁场不超过地磁场的 3 倍。
- ☐ 辐射环境: 无电磁辐射、粉尘污染、有毒气体、易燃易爆气体物体液体'化学放射、油污、极寒、高温等环境中。
- ☐ 安装条件: 安装面与垂直面的倾角不大于 $\pm 5^{\circ}$ 。
- ☐ The ambient temperature should be $-25^{\circ}\text{C} \sim +40^{\circ}\text{C}$, with the average temperature of no higher than 30°C within 24 hours.
- ☐ Climatic conditions: When the temperature is $+40^{\circ}\text{C}$ or above, the relative average humidity should not be higher than 50%. Under normal temperature ($+30^{\circ}\text{C}$), the relative average humidity should not exceed 80%. In the wettest month, the monthly average minimum temperature should not exceed 25°C , and the maximum humidity should not exceed 90%. The condensation on the product due to the temperature change should be considered.
- ☐ Altitude: not higher than 2000m.
- ☐ Pollution level: level 3.
- ☐ Installation category: category III.
- ☐ Impact vibration: the product should be installed in a place without obvious shaking, impact and vibration.
- ☐ Magnetic field environment: the relative magnetic field should not exceed 3 times of the geomagnetic field.
- ☐ Radiation environment: It should be kept away from electromagnetic radiation, dust pollution, toxic gas, flammable and explosive gas, object or liquid, chemical radiation, oil contamination, extremely low temperature, high temperature, etc.
- ☐ Installation condition: the inclination between the installation surface and the vertical plane should not exceed $\pm 5^{\circ}$.

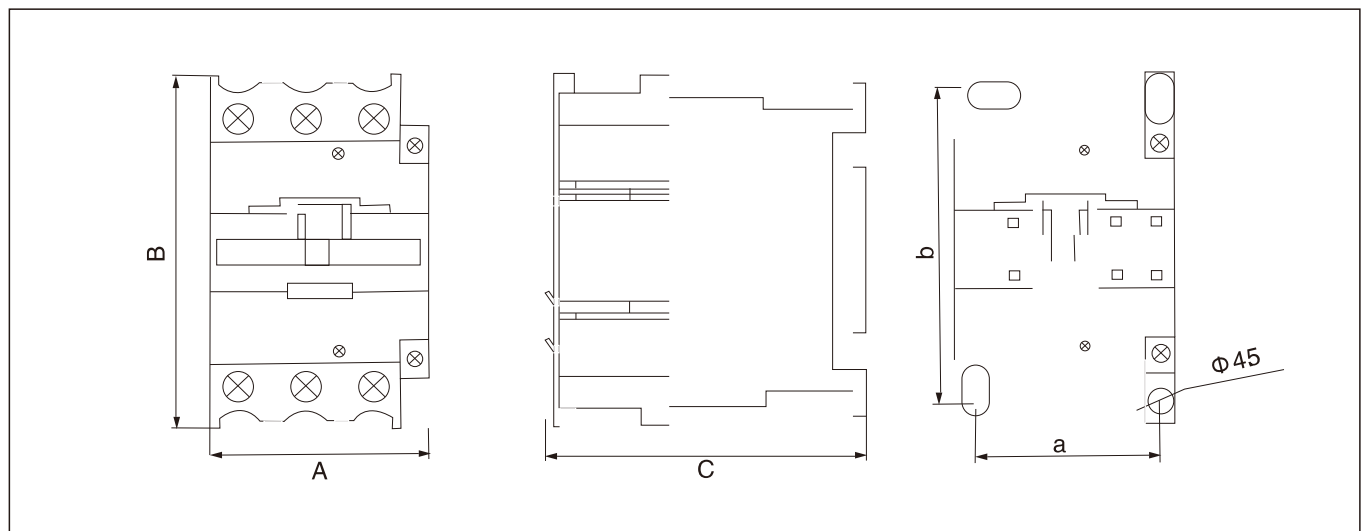
型号及含义 / Type and meaning



安装接线图 / Installation wiring diagram



外形及安装尺寸 / Outline and installation dimensions





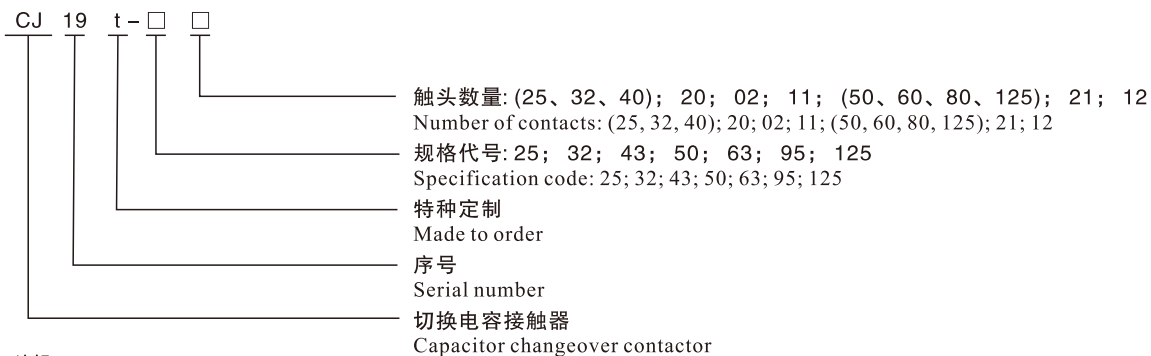
概述 / Overview

CJ19t系列切换电容器接触器(以下简称接触器), 主要用于交流50Hz(或60Hz)、额定工作电压至400V的电力线路中, 供低压无功功率补偿设备投入或 切除低压并联电容器之用。
接触器带有抑制涌流装置, 能有效地减小合闸涌流对电容的冲击和抑制开断时的过电压。

CJ19t series capacitor changeover contactor (hereinafter referred to as the contactor) is mainly used in the electric power circuits with the frequency of AC 50Hz (or 60Hz) and the rated working voltage of up to 400V for putting the low-voltage reactive power compensation equipment into operation or cutting off the low-voltage shunt capacitors.

The contactor is equipped with the inrush current suppression device, which can effectively reduce the impact of the closing inrush current on capacitors and suppress the overvoltage during breaking.

型号及含义 / Type and meaning



注解:

1、辅助触头数量用两位数字表示, 十位数字为常开触头的对数, 个位数字为常闭触头的对数。

2、在 AC-6b 400VAT,各种规格代号对应的额定工作电流: 25(18A)、32(24A)、43(29A)、50(36A)、63(48A)、95(58A)、125(87A)。

annotation:

1. The number of auxiliary contacts is represented by two digits, of which the tens digit is the logarithm of normally open contacts, and the units digit is the logarithm of normally closed contacts.

2. For AC-6b 400VAT, the rated working currents corresponding to various specification codes are 25(18A), 32(24A), 43(29A), 50(36A), 63(48A), 95(58A), 125(87A).

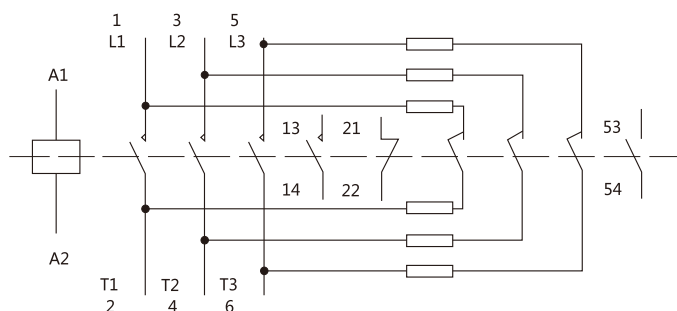
正常工作条件和安装条件 / Normal working conditions and installation conditions

- ☐ 周围空气温度不超过+40℃,且24h内的平均温度值不超过+35℃。周围空气温度的下限为-5℃;在最高温度为+40℃时,空气的相对湿度不超过50%,在较低的温度下可以允许有较高的相对湿度;
- ☐ 安装地点的海拔高度不超过2000m;
- ☐ 污染等级: 3级;
- ☐ 安装类别: II;
- ☐ 安装条件:接触器的安装面与垂直面的倾斜度不超过5°;
- ☐ 冲击与振动:安装在无显著摇动和冲动振动的地方。
- ☐ The ambient air temperature should not exceed +40°C, with the average temperature of no higher than +35°C within 24 hours. The lower limit of the ambient air temperature should be -5°C; When the highest temperature is +40°C, the relative humidity of the air should not be higher than 50%; A higher relative humidity is allowed at a lower temperature;
- ☐ The altitude of the installation site should not exceed 2000m;
- ☐ Pollution level: level 3;
- ☐ Installation category: category II;
- ☐ Installation condition: the inclination between the installation surface of the contactor and the vertical plane should not exceed 5°.
- ☐ Impact and vibration: the product should be installed in a place without obvious shaking, impact and vibration.

安装接线图 / Installation wiring diagram

CJ19t系列接线原理图见图1

For the schematic diagram of wiring of CJ19t series, please refer to Fig. 1.



L1 ~ L3接电源侧, T1 ~ T3接负载侧。
L1 ~ L3 should be connected to the power supply side; T1 ~ T3 should be connected to the load side.

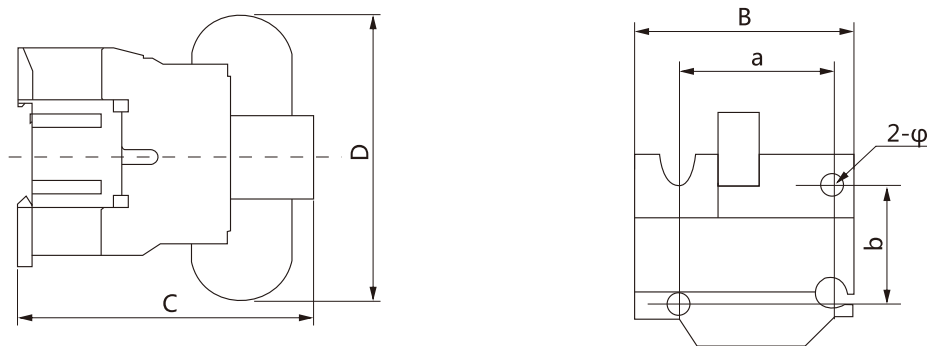
主要参数及技术性能 / Main parameters and technical performance

CJ19t		25	32	43	63	95	115	150	170
额定绝缘电压(Ui)V Rated insulation voltage (Ui)V		500V					690V		
额定工作电压(Ue)V Rated working voltage (Ue)V		220V/240V、380V/400V							
可控电容器容量(Qn)Kva Controllable capacitor Capacity (Qn)Kva	220V	6	9	10	15	28.8(240V)	34.5(240V)	46(240V)	52(240V)
	380V	12	18	20	30	50(400V)	60(400V)	80(400V)	90(400V)
约定自由空气发热电流Ith Conventional free air thermal current Ith		25	32	43	63	63	200	200	275
额定工作电流(AC-6b)Ie A Rated working current (AC-6b)Ie A		17	23	29	43	43	87	115	130
抑制涌流能力 Inrush current suppression capability		20Ie							
控制电源电压 Us V Control power supply voltage Us V		110、127、220、380							
辅助触头 Auxiliary contact		AC-15: 360VA DC-13: 33W Ith: 10A							
操作频率 次/小时 Operating frequency times /h		120							
电寿命 万次 Electrical endurance 10,000 times		10					2		
机械寿命 万次 Mechanical endurance 10,000 times		100					300		

尺寸型号 Dimensions and type	外形尺寸 Outline dimensions				安装尺寸 Installation dimensions			
	A	B	C	D	A	B	Φ	卡规
CJ19t-25	76	47	125	120	35	50/60	4.5	35
CJ19t-32	86	58	135	130	40	50/60		
CJ19t-43	86	58	135	130	40	50/60		
CJ19t-63	128	79	156	150	40	100/110	6.5	35/75
CJ19t-80	128	87	160	200	40	100/110		
CJ19t-95	128	87	160	200	40	100/110		

外形及安装尺寸 / Outline and installation dimensions

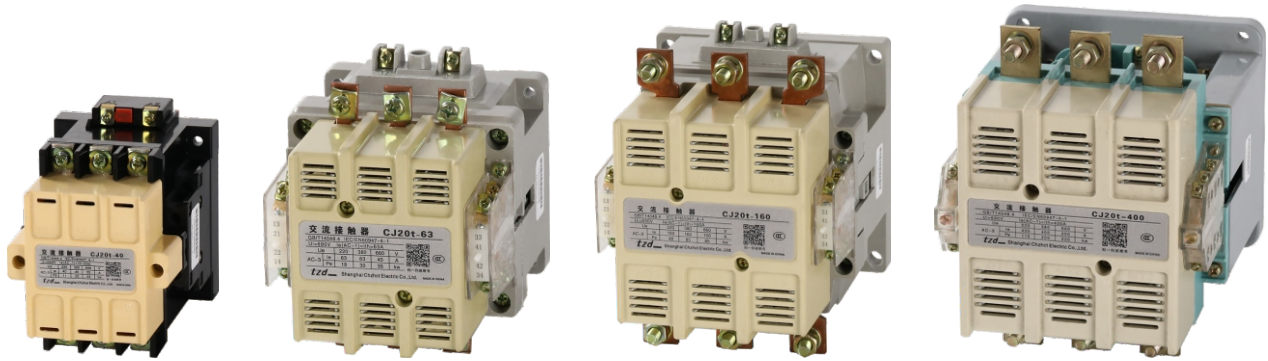
接触器除用螺钉安装外，还可用卡轨安装。
The contactor may be installed by screws or card track.



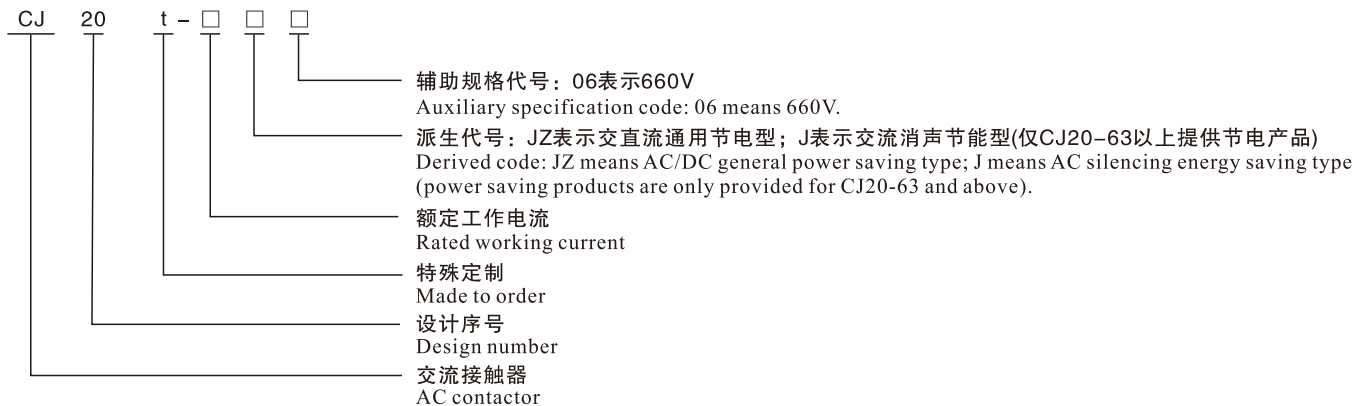
CJ19t-25、32、43的外形及安装尺寸图
Diagram of outline and installation dimensions of CJ19t-25, 32, 43

● 巡检柜首选产品

Preferred product for inspection cabinets



型号及含义 / Type and meaning



正常工作条件和安装条件 / Normal working conditions and installation conditions

- ☐ 周围空气温度为: $-5^{\circ}\text{C} \sim +40^{\circ}\text{C}$; , 24小时内其平均值不超过 $+35^{\circ}\text{C}$;
- ☐ 海拔高度: 不超过2000m;
- ☐ 大气条件: 最高温度 $+40^{\circ}\text{C}$ 时, 空气的相对湿度不超过50%; 在较低温度下可以允许有较高的相对湿度, 例如 20°C : 时达90%, 对由于温度变化偶尔产生的凝露应采取特殊的措施;
- ☐ 污染等级: 3级;
- ☐ 安装类别: III类;
- ☐ 安装条件: 安装面与垂直面倾斜度不大于 $\pm 5^{\circ}$;
- ☐ 冲击振动: 产品应安装和使用在无显著摇动、冲击和振动的地方。
- ☐ The ambient air temperature should be $-5^{\circ}\text{C} \sim +40^{\circ}\text{C}$, with the average temperature of no higher than $+35^{\circ}\text{C}$ within 24 hours.
- ☐ Altitude: not higher than 2000m;
- ☐ Atmospheric conditions: when the highest temperature is $+40^{\circ}\text{C}$, the relative humidity of the air should not be higher than 50%; A higher relative humidity is allowed at a lower temperature, such as 90% under 20°C . Special measures should be taken for occasional condensation due to temperature change;
- ☐ Pollution level: level 3;
- ☐ Installation category: category III;
- ☐ Installation condition: the inclination between the installation surface and the vertical plane should not exceed $\pm 5^{\circ}$;
- ☐ Impact vibration: the product should be installed and used in a place without obvious shaking, impact and vibration.

结构特点 / Structural features

接触器的触头系统为直动式.双断点布置, CJ20t-40A及以上辅助触头作为独立组件安装在主触头的两侧, 在电气上为分开的;

CJ20t-10-25A产品既可用螺钉安装, 也可用35mm标准卡轨安装;

CJ20t-10-16A产品采用双断点简单开断灭弧室, 其余均采用塑料栅片灭弧罩, 具有分断能力高、可靠性高的优点;

CJ20t-63~630节电产品具有直流通用节电模块, 不仅可以派生消声节能产品或直流操作产品, 而且不占用辅助触头, 从而大大提高了产品的可靠性和寿命。

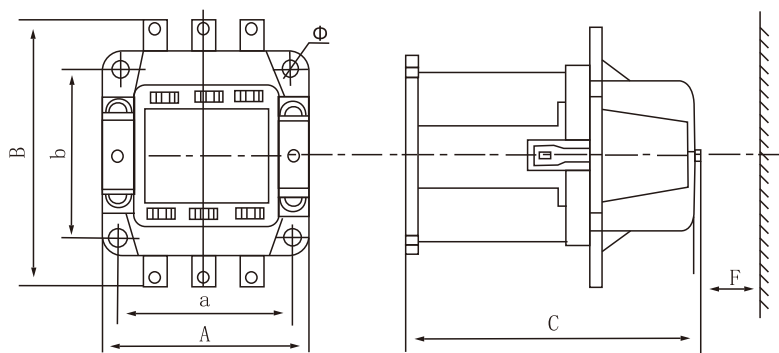
The contact system of the contactor is direct-acting with double breakpoints. For CJ20t-40A and above, the auxiliary contacts are installed on both sides of the main contact as independent components, which are electrically separated;

CJ20t-10-25A products may be installed by screws or by 35mm standard card track;

CJ20t-10-16A products have double breakpoints to simply break the arc extinguishing chamber, and the rest adopt the plastic grid arc extinguishing chamber, which has the advantages of high breaking capacity and high reliability;

CJ20t-63~630 power saving products have the DC general power saving module, which not only can derive silencing energy saving products or DC operated products, but also do not occupy auxiliary contacts, thus greatly improving the reliability and life of products.

外形及安装尺寸 / Outline and installation dimensions



型号 Type	A	B	C	a	b	Φ	l	F _{min}	重量 kg
CJ20t-40	86.5	111.5	118	70 ± 0.37	80 ± 0.37	5 ± 0.3	15 ± 0.19	30	0.96
CJ20t-63	116	142	146	100 ± 0.4	90 ± 0.4	5.8 ± 0.3	10 ± 0.29	60	2.9
CJ20t-100	120 ± 1.75	145 ± 2	150 ± 3.15	108 ± 0.435	92 ± 0.435	7 ± 0.58	15 ± 0.38	70	3
CJ20t-160	146	187	178	130 ± 0.5	130 ± 0.5	9 ± 0.58	15.5 ± 0.35	80	5.5
CJ20t-250	190	235	230	160 ± 0.5	150 ± 0.5	9 ± 0.58	17 ± 0.35	100	10.5
CJ20t-400	190	235	230	160 ± 0.5	150 ± 0.5	9 ± 0.58	17 ± 0.35	100	10
CJ20t-630	245	294	272	210 ± 0.575	180 ± 0.5	11 ± 0.7	11 ± 0.7	120	21.5
CJ20t-800-1000	245	294	287	210 ± 0.575	180 ± 0.5	11 ± 0.7	11 ± 0.7	120	21.5

● 巡检柜首选产品

Preferred product for inspection cabinets

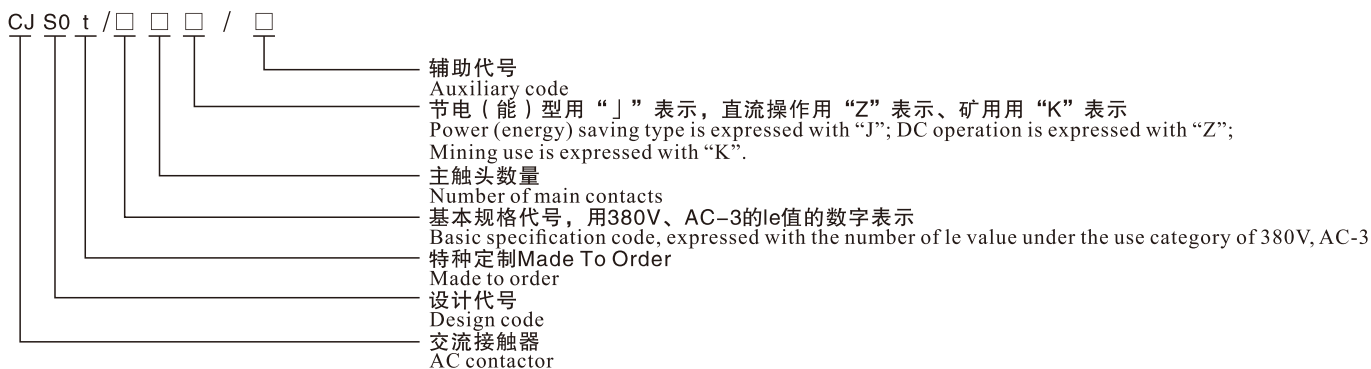


概述 / Overview

CJS0t系列交流接触器主要用于交流50Hz(或60Hz),额定工作电压至690V(或1140V),额定工作电流至1000A的电力线路中接通与分断电路,并与适当的热继电器或电子式保护装置组合成电动机启动器,以保护可能发生过载的电路。
产品符合GB14048.4和IEC60947-4-1等标准。

CJS0t series AC contactor is mainly used in the electric power circuits with the frequency of AC 50Hz (or 60Hz), the rated working voltage of up to 690V (or 1140V) and the rated working current of up to 1000A for connecting and breaking circuits, and working with the appropriate thermal relay or electronic protection device to form the motor starter to protect the circuits that may be overloaded.
Executive standards: GB14048.4 and IEC60947-4-1, etc.

型号及含义 / Type and meaning



辅助代号共由五部分组成,根据需要按以下顺序选用:

第一部分用字母“Y”表示一般型,可以不写出“N”表示可逆型;

第二部分用1位数字表示主电路极数:3、4分别表示3极、4极,3可以不写出;

第三部分用2位数字表示最高额定工作电压:“06”表示690V,可以不写出。“11”表示1140;

第四部分表示额定控制电源电压,用字母“AC”表示交流50Hz,“DC”表示直流,字母后用额定控制电源电压的数值表示,但“AC380”可以不写出;

第五部分用字母“F”和2位数字表示辅助触头种类及数量,前一位数字表示常开辅助触头对数,后一位数字表示常闭辅助触头对数,但“F42”可以不写出。

注:该项包括两部分:主触头数量、辅助触头数量。用数字分别表示,如下简图所示:

(-□□-□□)表示:一主触常开数、主触常闭数一辅触常开数、辅触常闭数。

The auxiliary code is composed of 5 parts, which are selected in the following order as needed:

In the first part, “Y” means general type; “N” (can be omitted) means reversible type;

In the second part, 1 digit is used to indicate the number of poles of the main circuit: 3 and 4 respectively indicate 3 and 4 poles, and 3 can be omitted;

In the third part, 2 digits are used to indicate the highest rated working voltage: “06” (which can be omitted) indicates 690V;

“11” indicates 1140V;

The fourth part indicates the rated control power supply voltage, with letters “AC” indicating alternating current 50Hz and “DC” indicating direct current. The value of the rated control power supply voltage is behind the letters, but “AC380” can be omitted;

In the fifth part, the letter “F” and two digits are used together to indicate the type and number of auxiliary contacts, of which the first digit indicates the number of pairs of normally open auxiliary contacts and the second digit indicates the number of pairs of normally closed auxiliary contacts, but “F42” can be omitted.

Note: This item includes two parts, i.e., the number of main contacts and the number of auxiliary contacts, which are indicated by number respectively, as shown in the diagram below:

(-□□-□□) indicates: - number of normally open main contacts, number of normally closed main contacts - number of normally open auxiliary contacts, number of normally closed auxiliary contacts

正常工作条件和安装条件 / Normal working conditions and installation conditions

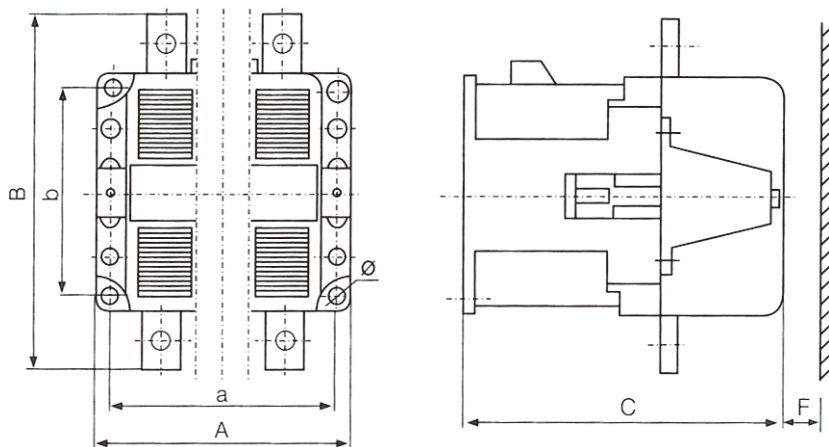
- ☐ 安装地点的海拔不超过2000m;
- ☐ 周围空气温度上限值不超过+40℃，下限值不低于-5℃;
- ☐ 安装地点的空气相对湿度在最高温度为+40℃时不超过50%，在较低温度下可以有较高的相对湿度，最湿月的月平均最低温度不超过+20℃，该月的平均最大相对湿度不超过90%。由于温度变化发生在产品上的凝露情况必须采取措施；
- ☐ 与垂直面的安装倾斜不超过±5°；
- ☐ 污染等级：3级；
- ☐ 在无显著摇动、冲击和振动的地方。
- ☐ The altitude of the installation site should not exceed 2000m;
- ☐ The ambient air temperature should not be higher than +40℃ and not be lower than -5℃;
- ☐ When the highest temperature is +40℃, the relative humidity of the air on the installation site should not be higher than 50%; A higher relative humidity is allowed at a lower temperature; In the wettest month, the monthly average minimum temperature should not exceed +20℃, and the average maximum relative humidity should not exceed 90%. Measures should be taken for condensation on the product due to temperature change;
- ☐ The inclination between the installation surface and the vertical plane should not exceed ± 5°;
- ☐ Pollution level: level 3;
- ☐ The product should be installed in a place without obvious shaking, impact and vibration.

产品结构特点 / Structural features of the product

CJS0t-63~1000交流接触器为开启式正装直动式双断点结构，辅助触头作为独立组件安装在主触头的两侧，在电气上为分开的。铁芯为“U”型结构永久性气隙。底座为铝合金压铸(CJS0t-6304及以上)，螺钉安装；而CJS0t-63~125底座为不饱和聚酯玻璃纤维增强模塑料，安装方式可以螺钉安装，也可以用“TH75”导轨安装。灭弧罩采用耐弧塑料加铁质栅片组成，具有分断能力高，可靠性高等优点。

CJS0t-63~1000 AC contactor adopts the structure of open type, normal installation, direct acting and double breakpoints. The auxiliary contacts are installed on both sides of the main contact as independent components, which are electrically separated; The iron core is a U-shaped structure with permanent air gap. The base is made of aluminum alloy die-casting (for CJS0t-6304 and above), which is installed by screws; But, the base of CJS0t-63~125 is made of unsaturated polyester glass fiber reinforced molding compound, which may be installed by screws or by “TH75” guide rail. With the advantages of high breaking capacity and high reliability, etc., the arc extinguishing chamber is made of arc resistant plastic and iron grid.

外形及安装尺寸 / Outline and installation dimensions



CJS0t-63~1000交流接触器外形及安装尺寸

单位:MM

Outline and installation dimensions of CJS0t-63~1000 AC contactor

产品型号 Product type	外形尺寸Max Outline dimensions			安装尺寸 Installation dimensions			安装轨 Installation rail	安装区域F min Installation area	
	A	B	C	a	b	Φ		380V	660V
CJS0t-63-125	116	143	154	100	90	5.8	Th75	20	40
CJS0t-160-200	146	186	184	130	130	9	-	30	40
CJS0t-250								40	60
CJS0t-315-400	190	235	230	160	150	9		40	60
CJS0t-500								50	70
CJS0t-630-1250	245	345	288	210	180	11		0	0
CJS0t-63/4~125/4	143	143	154	128	90	5.8	Th75	20	40
CJS0t-63/4~200/4	187	186	184	170	130	9	-	30	40
CJS0t-250-4								40	60
CJS0t-315/4~400/4	236	235	230	216	150	9		40	60
CJS0t-500/4								50	70

主要参数及技术性能 / Main parameters and technical performance

型号规格 Type and specifications	框架代号 Frame code	U V		I _{th} A	断续周期工作制下的I _{eA} I _{eA} under intermittent periodic working system				AC-3下的P _e kW P _e kW under AC-3	不同断工作制下的I _{eA} I _{eA} under different intermittent working systems
					AC-1	AC-2	AC-3	AC-4		
CJS0t-63	125	690	220	80	80	63	63	63	18.5	80
			380						30	
			660							
CJS0t-80			220			80	80	80		
			380	125	125	63	63	63	55	125
CJS0t-100			660						30	
			220			100	100	100		
			380			80	80	80		
CJS0t-125			660			125	125	125	125	
			220						110	
			380						80	
			660			80	80	80		
CJS0t-160	250	690	220	250	250	160	160	160	45	250
			380						75	
			660			125	125	125	110	
CJS0t-200			220			200	200	200	55	
			380						90	
			660			125	125	125	110	
CJS0t-250			220			250	250	250	75	
			380						132	
			660			125	125	125	110	
CJS0t-315	500	690	220	500	500	315	315	315	90	500
			380						160	
CJS0t-400			660			400	400	400	300	
			220						110	
			380						220	
CJS0t-500			660			315	315	315	300	
			220			500	500	500	150	
			380						280	
			660			315	315	315	300	
CJS0t-630			1000			690	220	800	630	
	380	500		500	500		335			
CJS0t-800	660	500		500	500		475			
	220	800		800	800		250			800
	380						630	450		
	660						500	475		
	220	1000		1000	1000		360	1000		
	380						550			
CJS0t-1250	660		630				630		500	570
	220		375							
	380	1250	1250	1250	1250		600	1250		
	660						630			
CJS0t 125/11	1250	1140	1140	125	125	40	40	40	55	125
CJS0t-250/11	250		1140	250	250	80	80	80	110	250
CJS0t-500/11	500		1140	500	500	160	160	160	220	500
CJS0t-1000/11	1000		1140	1000	1000		400		600	1000

● 水泵控制箱、化工厂首选产品

Preferred product for water pump control boxes and chemical plants



概述 / Overview

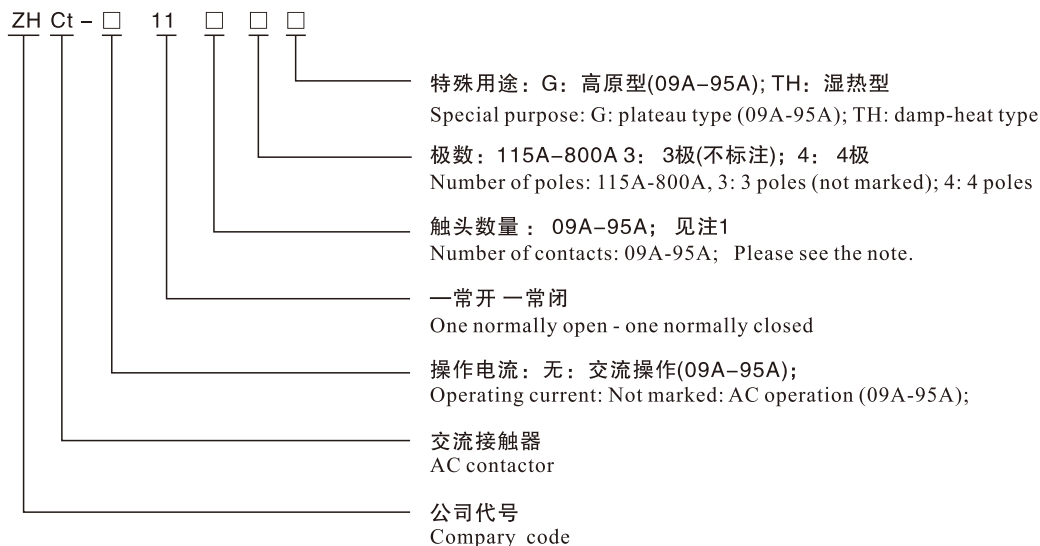
ZHCt改型款交流接触器(以下简称接触器), 主要用于交流50Hz或60Hz,电压至690V,在AC-3、400(380)V使用类别下额定工作电流至95A的电路中, 供远距离接通和分断电路、频繁地起动和控制交流电动机之用, 并可与适当的热继电器组成电磁起动器以保护可能发生操作过负荷的电路。

符合标准: GB/T14048.4、IEC 60947-4-1。

ZHCt modified AC contactor (hereinafter referred to as the contactor) is mainly used in the circuits with the frequency of AC 50Hz or 60Hz, the voltage of up to 690V, and the rated working current of up to 95A under the use categories of AC-3 and 400(380)V for connecting and breaking circuits remotely, frequently starting and controlling AC motors, and working with the appropriate thermal relay to form the electromagnetic starter to protect the circuits that may be overloaded.

Executive standards: GB/T14048.4.-2020 □ IEC60947-1(1999) □ IEC947-4-1

型号及含义 / Type and meaning



注1:
09A-95A以辅助触头的形式, 115A-800A以极数形式
11表示三常开主触头, 一常开一常闭辅助触头。

Note 1:
09A-95A adopts the number of auxiliary contacts, while 115A-800A adopts the number of poles.
11 means three normally open main contacts, one normally open auxiliary contact and one normally closed auxiliary contact

正常工作条件和安装条件/ Normal working conditions and installation conditions

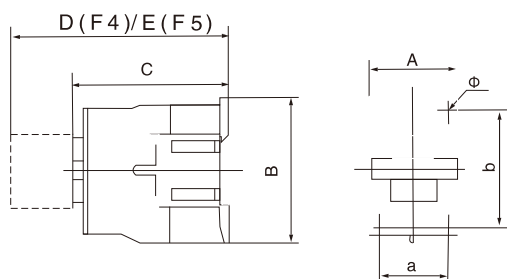
- ☐ 周围空气温度为：-5I~+40℃，24小时内其平均值不超过+35℃；
- ☐ 海拔高度：不超过2000m；
- ☐ 大气条件：最高温度+40℃，时空气的相对湿度不超过50%；在较低温度下可以允许有较高的相对湿度，例如20℃。时达90%。对由于温度变化偶尔产生的凝露应采取特殊的措施；
- ☐ 污染等级：3级；
- ☐ 安装类别：III类；
- ☐ 安装条件：安装面与垂直面倾斜度不大于±5°；
- ☐ 冲击振动：产品应安装和使用在无显著摇动、冲击和振动的地方。
- ☐ The ambient air temperature should be -5℃~+40℃, with the average temperature of no higher than +35℃ within 24 hours.
- ☐ Altitude: not higher than 2000m;
- ☐ Atmospheric conditions: when the highest temperature is +40℃, the relative humidity of the air should not be higher than 50%; A higher relative humidity is allowed at a lower temperature, such as 90% under 20℃. Special measures should be taken for occasional condensation due to temperature change;
- ☐ Pollution level: level 3;
- ☐ Installation category: category III;
- ☐ Installation condition: the inclination between the installation surface and the vertical plane should not exceed ±5°.
- ☐ Impact vibration: the product should be installed and used in a place without obvious shaking, impact and vibration.

主要参数及技术性能 /Main parameters and technical performance

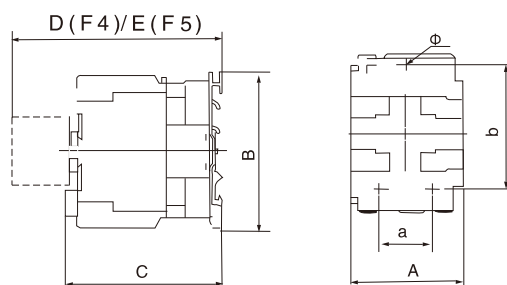
接触器的主要参数及技术性能指标 Main parameters and technical performance indicators of the contactor

型号Type			ZHCT-0911	ZHCT-1211	ZHCT-1611	ZHCT-1811	ZHCT-2211	ZHCT-2511	ZHCT-3211	ZHCT-3811	ZHCT-4511	ZHCT-5511	ZHCT-7011	ZHCT-8011	ZHCT-10011
额定工作电流 Rated working current	400(380)V	AC-3	9	12	16	18	22	25	32	38	45	55	70	85	100
		AC-4	3.5	5	6.5	7.7	8	8.5	12	15	18.5	24	28	37	44
	690(660)V	AC-3	6.6	8.9	8.9	12	14	18	21	32	34	39	42	49	49
		AC-4	1.5	2	3	3.8	4	4.4	7.5	8.5	9	12	14	17.3	21.3
约定自由空气发热电流 Conventional free air thermal current			20	20	25	32	38	40	50	60	60	80	80	95	95
额定绝缘电压 Rated insulation voltage			690	690	690	690	690	690	690	690	690	690	690	690	690
可控三相鼠笼 电动机功率(AC-3)kW Controllable three-phase squirrel cage motor power (AC-3) kW		230(220)V	2.2	3	3.5	4	5	5.5	7.5	10	11	15	18.5	22	25
		400(380)V	4	5.5	7	7.5	10	11	15	18	18.5	22	30	37	45
		690(660)V	5.5	7.5	9	10	14	15	18.5	22	30	37	37	45	45
操作频率(次/h) Operating frequency (times /h)	电寿命机械寿命 Electrical endurance, mechanical endurance	AC-3	1200	1200	1200	1200	1200	1200	1200	1200	600	600	600	600	600
		AC-4	300	300	300	300	300	300	300	300	300	300	300	300	300
			3600	3600	3600	3600	3600	3600	3600	3600	3600	3600	3600	3600	3600
电寿命(万次) Electrical endurance (10,000 times)	AC-3		100	100	100	100	80	80	60	60	80	60	60	60	60
	AC-4		20	20	20	20	20	20	20	20	15	15	15	10	10

外形及安装尺寸 / Outline and installation dimensions



ZHCt-09~32外形及安装尺寸
Outline and installation dimensions of ZHCt-09~32



ZHCt-45~100外形及安装尺寸
Outline and installation dimensions of ZHCt-45~100

接触器型号 Contactor type	A max	B max	C max	D max	E max	a	b	Φ
ZHCt-0911~1211	47	76	87	120.5	145.5	34/35	56/60	4.5
ZHCt-1611~1811	47	76	87	125.5	145.5	34/35	50/60	4.5
ZHCt-2211~2511	57	86	100	138.5	158.5	40	48	4.5
ZHCt-3211~3811	57	86	100	138.5	158.5	40	48	4.5
ZHCt-4511~7011	77	129	116	154.5	174.5	40	105	6.5
ZHCt-4504~7004	84	129	116	154.5	174.5	40	105	6.5
ZHCt-4508~7008	84	129	127	154.5	174.5	40	105	6.5
ZHCt-8511~10011	87	129	127	165.5	185.5	40	105	6.5
ZHCt-8504~10004	96	129	122	160.5	180.5	40	105	6.5
ZHCt-8508~10008	96	129	135	160.5	180.5	40	105	6.5



概述 / Overview

ZHCt直动式交流接触器主要用于交流50Hz(或60Hz),额定工作电压至1000V,额定工作电流至1400A的电力系统中,远距离接通,分断电路和起动,停止、反向及反接制动电动机。

本系列接触器符合标准: GB/T14048.1-2000, GB14048.4-93, IEC60947-1(1999), IEC947-4-1。

本系列接触器有ZHCt-120、150、185、225、265、330、400、500、630、780、1200、1400十二个规格,其外形和安装尺寸与LC1-D、LC1-F相同。

ZHCt-120-780接触器还可以作为直流接触器使用。(须和本公司联系)。

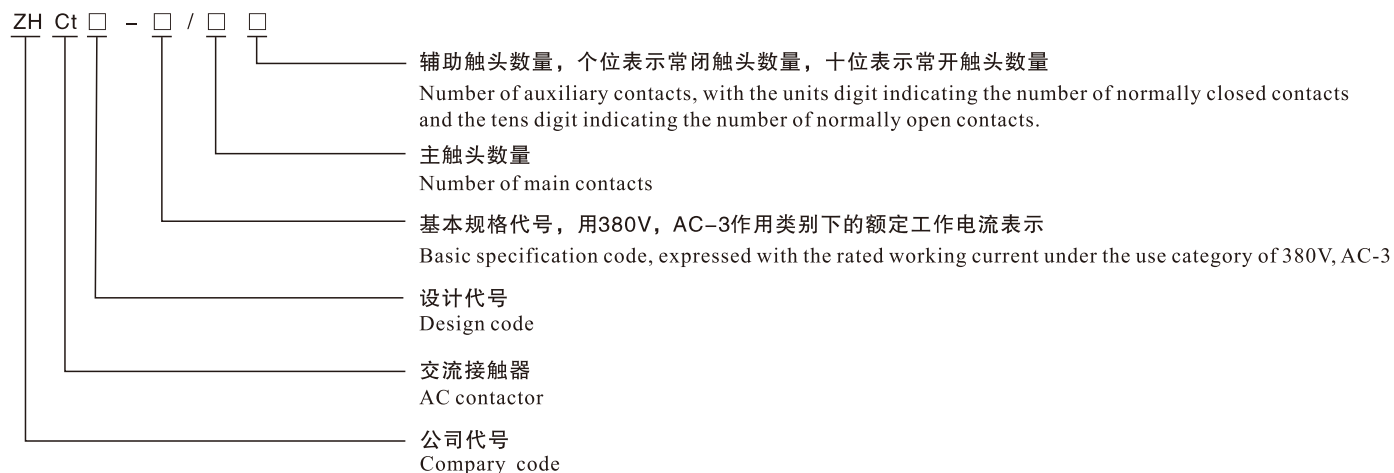
ZHCt direct-acting AC contactor is mainly used in the electrical power systems with the frequency of AC 50Hz (or 60Hz), the rated working voltage of up to 1000V, and the rated working current of up to 1400A for remote connection and breaking of circuits, as well as starting, stopping, reversing and reverse connection of brake motors.

Executive standards: GB/T14048.4-2020, , IEC60947-1(1999), IEC947-4-1

There are 12 specifications for this series of contactors, including ZHCt-120, 150, 185, 225, 265, 330, 400, 500, 630, 780, 1200 and 1400. The outline and installation dimensions of this series of contactors are the same as those of LC1-D and LC1-F.

ZHCt-120-780 contactors can also be used as DC contactors.(Please contact the Company).

型号及含义 / Type and meaning



产品结构特点 / Product structure characteristics

- ☐ 结构简单紧凑，独特新颖，功能模块化，组装积木化；
 - ☐ 线圈采用塑料封装，工艺先进，外型美观，绝缘强度高，机械强度高；
 - ☐ ZHCT-120 ~ 780-1200-1400线圈和静铁芯组成抽屉，只需按下按钮就可装入或抽出，维修方便；
 - ☐ 灭弧罩采用高强度塑料压制而成，机械强度高，灭弧性能好，且采用锁杆旋转压缩弹簧固定，方便可靠；
 - ☐ 辅助触头数量多且更换方便，ZHCT-120 ~ 780 ~ 1200 ~ 1400接触器线圈上带有一个专用辅助触头供自锁转换直流控制，还可加装两个辅助触头组共8对辅助触头，辅助触头组安装不用螺钉固定，只要沿导轨，一推，听到“咔嚓”一声即可。如果需用空气延时头时，可直接用其换下辅助触头组即可；
 - ☐ 接触器节电效果明显。ZHCT-400-780 ~ 1200-1400为交流输入直流控制；
 - ☐ 接触器机械联锁简单可靠，可使两台接器横向联锁，ZHCT-120 ~ 630还可实现两台接触器竖向联锁和三台接触器的竖向互相联锁。
- ☐ It has simple, compact, new and unique, with modular function and assembly modularization.
 - ☐ The coil is packaged in plastic, with advanced technology, beautiful appearance, good insulation strength and high mechanical strength.
 - ☐ For ZHCT-120~780-1200-1400, coil and static iron core form a drawer for pushing in and pulling out by pressing the button and thus for easy repair.
 - ☐ The arc extinguishing chamber is made of high-strength plastic, which has high mechanical strength and good arc extinguishing performance, and is fixed by locking bar rotating compression spring, which is convenient and reliable.
 - ☐ There are many auxiliary contacts, which are replaced easily. For ZHCT-120~780~1200~1400 contactors, the coil is provided with a special auxiliary contact for DC control of self-locking conversion. It is allowed to additionally install two auxiliary contactor sets so that there are 8 pairs of auxiliary contactors. The auxiliary contactor sets are installed only along the guide rail, with no need of screws. Give it a push, when you hear a click, the auxiliary contactor sets are installed successfully.If the air damping type time relay is required, it can be used directly to replace the auxiliary contact set.
 - ☐ The contactor can save electricity significantly.ZHCT-400-780~1200-1400 features AC input and DC control.
 - ☐ The mechanical interlocking of the contactor is simple and reliable. Two contactors can be interlocked horizontally. ZHCT-120 ~ 630 contactors can also realize vertical interlocking of two contactors and vertical interlocking between three contactors.

主要参数及技术性能 / Main parameters and technical performance

- ☐ 动作性能：吸合电压为85% ~ 110%Us，释放电压对于交流线圈为20% ~ 75%Us，对于直流线圈为10% ~ 75%Us。
- ☐ 圈的控制电压：ZHCT-120 ~ 780 ~ 1400 交流127,220,380V 直流110,220V，也可供其它任何电压的线圈。
- ☐ 接触器适用的短路保护电器推荐为NT系列熔断器。
- ☐ Action performance:The pull-in voltage is 85%~110%Us,the release voltage is 20%~75%Us for the AC coil,and 10%~75%Us for the DC coil.
- ☐ Coil control voltage:ZHCT-120~780~1400 AC 127,220,380V DC 110,220V,can also be used for coils of any other voltage.
- ☐ Recommended short circuit protection for contactors is NT series fuse.

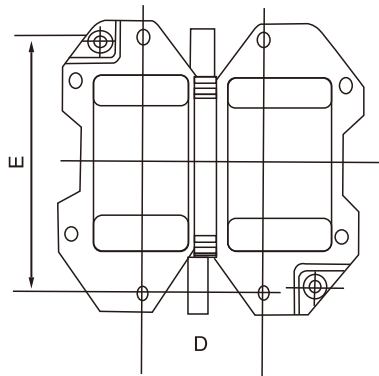
接触器的主要参数及技术性能指标 Main parameters and technical performance indicators of the contactor

型号 Type		ZHCT-120	ZHCT-150	ZHCT-185	ZHCT-225	ZHCT-265	ZHCT-330	ZHCT-400	ZHCT-500	ZHCT-630	ZHCT-780
额定绝缘电压 Rated insulation voltage		1000									
约定发热电流 Conventional thermal current		200	250	275	315	350	450	500	700	800	800
AC-3使用类别下工作电流 Working current under the use category of AC-3	380V	115	150	185	225	265	330	400	500	630	780
	660V	86	107	118	135	170	225	305	355	460	630
	1000V	46	60	71	90	100	132	115	200	320	312
AC-3使用类别下控制电动机功率 Control motor power under the use category of AC-3	380V	55	75	90	110	132	160	200	250	335	450
	660V	80	100	110	129	160	220	280	335	450	475
	1000V	65	65	100	100	147	160	185	335	450	450

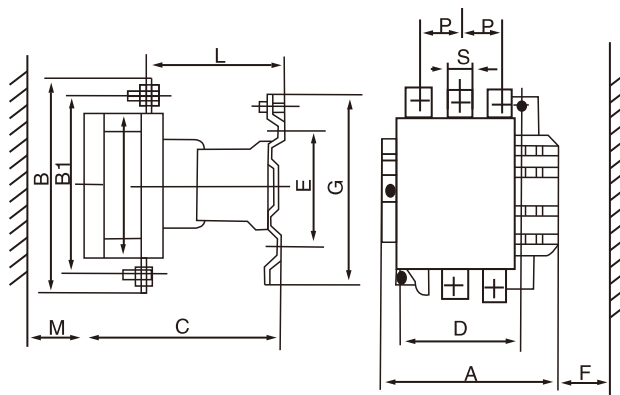
外形及安装尺寸 / Outline and installation dimensions

注:1)M为飞弧距离 2)F为更换线圈所需空间Note: 1)

Notes: 1) M is the flashover distance; 2) F is the space required for replacement of coils.



ZHCT-400~500外形尺寸 图3
Outline dimensions of ZHCT-400~500 Fig. 3



ZHCT-630外形及安装尺寸 图4
Outline and installation dimensions of ZHCT-630 Fig. 4

型号 Type	极数	A	B	C	D	E	F ²⁾	G	H	M ¹⁾	P	S	B1	安装螺钉
ZHCT-120	3极	166.5	162	171	80	113	131	137	124	40	37	15	147	M6
	4极	200.5	162	171	80	113	131	137	124	40	37	15	147	M6
ZHCT-150	3极	166.5	172	171	80	113	131	137	124	40	40	20	150	M6
	4极	200.5	172	171	80	113	131	137	124	40	40	20	150	M6
ZHCT-185	3极	168.5	174	181	80	113	131	137	137	40	40	20	154	M6
	4极	208.5	174	181	80	113	131	137	137	40	40	20	154	M6
ZHCT-225	3极	168.5	197	181	80	113	131	137	137	50	48	25	172	M6
	4极	208.5	197	181	80	113	131	137	137	50	48	25	172	M6
ZHCT-265	3极	201.5	203	213	96	113	147	145	147	50	48	25	178	M6
	4极	224.5	203	213	96	113	147	145	147	50	48	25	178	M6
ZHCT-330	3极	213	209	219	96	113	147	145	158	60	48	25	181	M6
	4极	261	209	219	96	113	147	145	158	60	48	25	181	M6
ZHCT-400	3极	213	209	219	80	175	119	209	158	60	48	25	181	M8
	4极	261	209	219	80	175	119	209	158	60	48	25	181	M8
ZHCT-500	3极	233	238	232	80	175	141	209	158	70	55	30	208	M8
	4极	288	238	232	140	175	141	209	158	70	55	30	208	M8
ZHCT-630	3极	309	225	225	180	185	181	280	202	80	40	40	264	M10
	4极	389	225	225	240	185	181	280	202	80	40	40	264	M10

● 风机箱、低压成套开关柜首选产品

Preferred product for fan boxes and low-voltage switchgear assemblies.



概述 / Overview

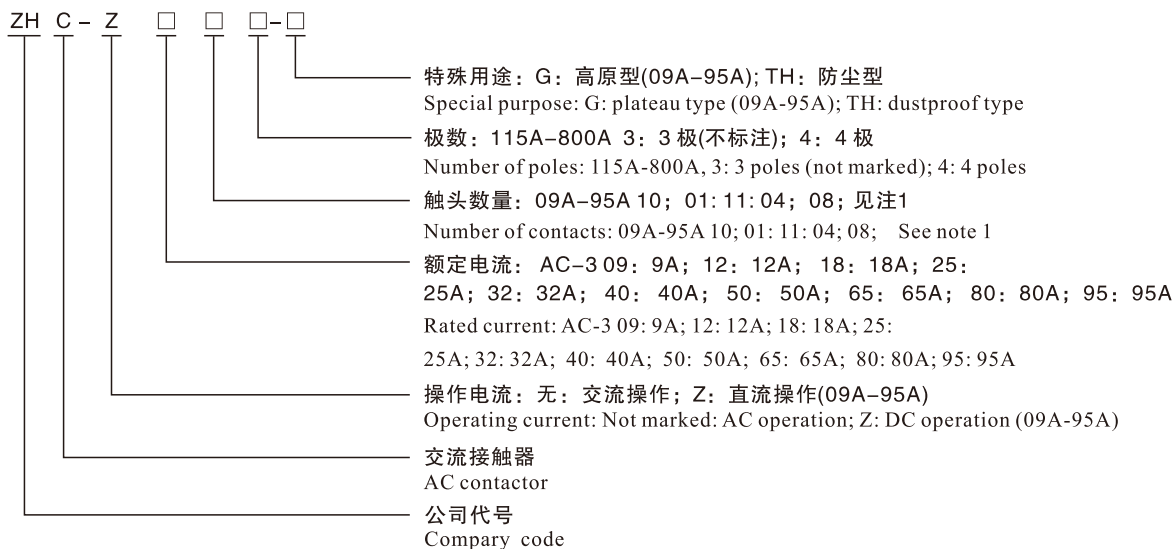
ZHC系列交流接触器(以下简称接触器),主要用于交流50Hz或60Hz,电压至690V,在AC-3、400(380)V使用类别下额定工作电流至95A的电路中,供远距离接通和分断电路、频繁地起动和控制交流电动机之用,并可与适当的热继电器组成电磁起动器以保护可能发生操作过负荷的电路。

符合标准: GB/T-14048.4-2020, IEC60947-1(1999), IEC 947-4-1。

ZHC series AC contactor (hereinafter referred to as the contactor) is mainly used in the circuits with the frequency of AC 50Hz or 60Hz, the voltage of up to 690V, and the rated working current of up to 95A under the use categories of AC-3 and 400(380)V for connecting and breaking circuits remotely, frequently starting and controlling AC motors, and working with the appropriate thermal relay to form the electromagnetic starter to protect the circuits that may be overloaded.

Executive standards: GB/T-14048.4-2020, IEC60947-1(1999), IEC 947-4-1.

型号及含义 / Type and meaning



注1:

09A-95A以辅助触头的形式, 115A-800A以极数形式
10表示三常开主触头, 一常开辅助触头(32A及以下);
01表示三常开主触头, 一常闭辅助触头(32A及以下);
11表示三常开主触头, 一常开一常闭辅助触头(40A及以上)。

Note 1:

09A-95A adopts the number of auxiliary contacts, while 115A-800A adopts the number of poles.
10 means three normally open main contacts and one normally open auxiliary contact (32A and below);
01 means three normally open main contacts and one normally closed auxiliary contact (32A and below);
11 means three normally open main contacts, one normally open auxiliary contact and one normally closed auxiliary contact (40A and above).

正常工作条件和安装条件/Normal working conditions and installation conditions

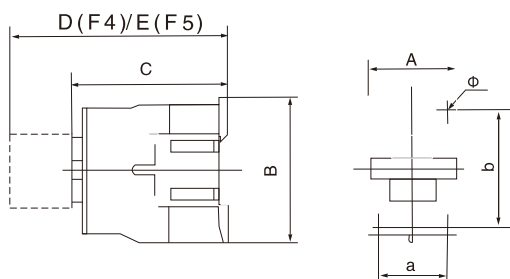
- ☐ 周围空气温度为： -5°C ~ $+40^{\circ}\text{C}$ ，24小时内其平均值不超过 $+35^{\circ}\text{C}$ ；
- ☐ 海拔高度：不超过2000m；
- ☐ 大气条件：最高温度 $+40^{\circ}\text{C}$ ，时空气的相对湿度不超过50%；在较低温度下可以允许有较高的相对湿度，例如 20°C 。时达90%。对由于温度变化偶尔产生的凝露应采取特殊的措施；
- ☐ 污染等级：3级；
- ☐ 安装类别：III类；
- ☐ 安装条件：安装面与垂直面倾斜度不大于 $\pm 5^{\circ}$ ；
- ☐ 冲击振动：产品应安装和使用在无显著摇动、冲击和振动的地方。
- ☐ The ambient air temperature should be -5°C ~ $+40^{\circ}\text{C}$, with the average temperature of no higher than $+35^{\circ}\text{C}$ within 24 hours.
- ☐ Altitude: not higher than 2000m;
- ☐ Atmospheric conditions: when the highest temperature is $+40^{\circ}\text{C}$, the relative humidity of the air should not be higher than 50%; A higher relative humidity is allowed at a lower temperature, such as 90% under 20°C . Special measures should be taken for occasional condensation due to temperature change;
- ☐ Pollution level: level 3;
- ☐ Installation category: category III;
- ☐ Installation condition: the inclination between the installation surface and the vertical plane should not exceed $\pm 5^{\circ}$;
- ☐ Impact vibration: the product should be installed and used in a place without obvious shaking, impact and vibration.

主要参数及技术性能 / Main parameters and technical performance

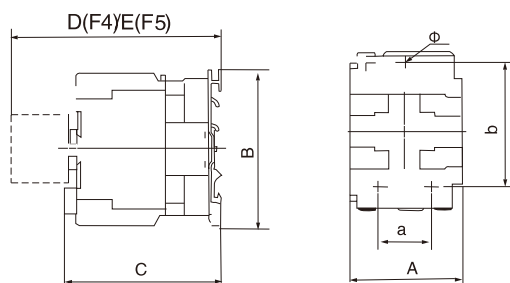
接触器的主要参数及技术性能指标 Main parameters and technical performance indicators of the contactor

型号Type			ZHC-09	ZHC-12	ZHC-18	ZHC-25	ZHC-32	ZHC-40	ZHC-50	ZHC-65	ZHC-80	ZHC-95
额定工作电流 Rated working current	400(380)V	AC-3	9	12	18	25	32	40	50	65	80	95
		AC-4	3.5	5	7.7	8.5	12	18.5	24	28	37	44
	690(660)V	AC-3	6.6	8.9	12	18	21	34	39	42	49	49
		AC-4	1.5	2	3.8	4.4	7.5	9	12	14	17.3	21.3
约定自由空气发热电流 Conventional free air thermal current			20	20	32	40	50	60	80	80	95	95
额定绝缘电压 Rated insulation voltage			690	690	690	690	690	690	690	690	690	690
可控三相鼠笼 电动机功率(AC-3)kW Controllable three-phase squirrel cage motor power (AC-3) kW		230(220)V	2.2	3	4	5.5	7.5	11	15	18.5	22	25
		400(380)V	4	5.5	7.5	11	15	18.5	22	30	37	45
		690(660)V	5.5	7.5	10	15	18.5	30	37	37	45	45
操作频率(次/h) Operating frequency (times /h)	电寿命机械寿命 Electrical endurance, mechanical endurance	AC-3	1200	1200	1200	1200	600	600	600	600	600	600
		AC-4	300	300	300	300	300	300	300	300	300	300
			3600	3600	3600	3600	3600	3600	3600	3600	3600	3600
电寿命(万次) Electrical endurance (10,000 times)	AC-3		100	100	100	100	80	80	60	60	60	60
	AC-4		20	20	20	20	20	15	15	15	10	10

外形及安装尺寸 / Outline and installation dimensions



ZHC-09~32外形及安装尺寸
Outline and installation dimensions of ZHC-09~32



ZHC-40~95外形及安装尺寸
Outline and installation dimensions of ZHC-40~95

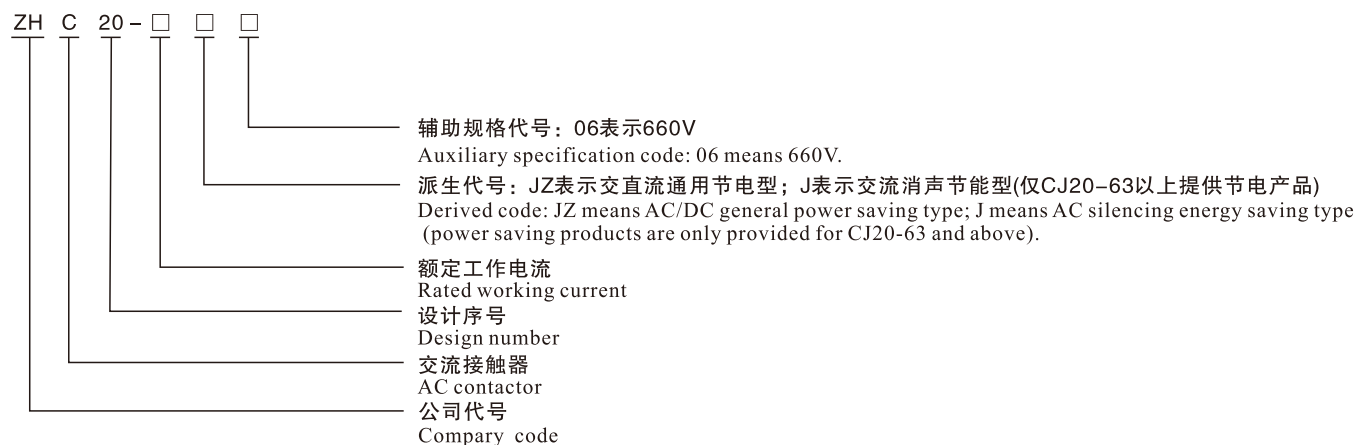
接触器型号 Contactor type	A max	B max	C max	D max	E max	a	b	Φ
ZHC-09~12	47	76	82	120.5	140.5	34/35	56/60	4.5
ZHC-18	47	76	87	125.5	145.5	34/35	50/60	4.5
ZHC-25	57	86	95	133.5	153.5	40	48	4.5
ZHC-32	57	86	100	138.5	158.5	40	48	4.5
ZHC-4011~6511	77	129	116	154.5	174.5	40	105	6.5
ZHC-4004~6504	84	129	116	154.5	174.5	40	105	6.5
ZHC-4008~6508	84	129	127	154.5	174.5	40	105	6.5
ZHC-8011~9511	87	129	127	165.5	185.5	40	105	6.5
ZHC-8004~9504	96	129	122	160.5	180.5	40	105	6.5
ZHC-8008~9508	96	129	135	160.5	180.5	40	105	6.5

● 低压成套开关柜首选产品

Preferred product for low-voltage switchgear assemblies.



型号及含义 / Type and meaning



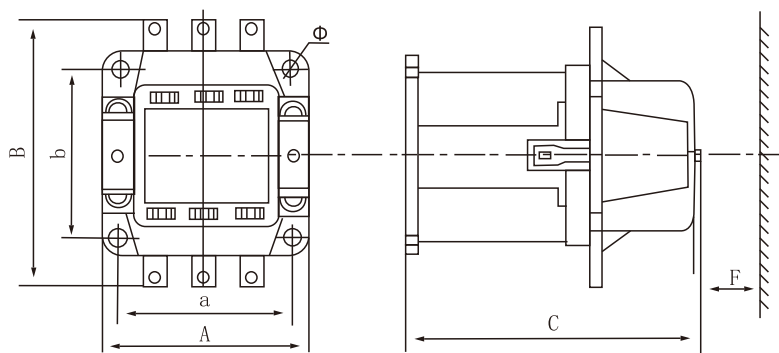
正常工作条件和安装条件/ Normal working conditions and installation conditions

- ☐ 周围空气温度为: $-5^{\circ}\text{C} \sim +40^{\circ}\text{C}$; , 24小时内其平均值不超过 $+35^{\circ}\text{C}$;
 - ☐ 海拔高度: 不超过2000m;
 - ☐ 大气条件: 最高温度 $+40^{\circ}\text{C}$ 时, 空气的相对湿度不超过50%; 在较低温度下可以允许有较高的相对湿度, 例如 20°C : 时达90%, 对由于温度变化偶尔产生的凝露应采取特殊的措施;
 - ☐ 污染等级: 3级;
 - ☐ 安装类别: III类;
 - ☐ 安装条件: 安装面与垂直面倾斜度不大于 $\pm 5^{\circ}$;
 - ☐ 冲击振动: 产品应安装和使用在无显著摇动、冲击和振动的地方。
-
- ☐ The ambient air temperature should be $-5^{\circ}\text{C} \sim +40^{\circ}\text{C}$, with the average temperature of no higher than $+35^{\circ}\text{C}$ within 24 hours.
 - ☐ Altitude: not higher than 2000m;
 - ☐ Atmospheric conditions: when the highest temperature is $+40^{\circ}\text{C}$, the relative humidity of the air should not be higher than 50%; A higher relative humidity is allowed at a lower temperature, such as 90% under 20°C . Special measures should be taken for occasional condensation due to temperature change;
 - ☐ Pollution level: level 3;
 - ☐ Installation category: category III;
 - ☐ Installation condition: the inclination between the installation surface and the vertical plane should not exceed $\pm 5^{\circ}$;
 - ☐ Impact vibration: the product should be installed and used in a place without obvious shaking, impact and vibration.

产品结构特点 / Structural features of the product

- ☐ 接触器的触头系统为直动式.双断点布置, ZHC20-40A及以上辅助触头作为独立组件安装在主触头的两侧, 在电气上为分开的;
- ☐ ZHC20-10-25A产品既可用螺钉安装, 也可用35mm标准卡轨安装;
- ☐ ZHC20-10-16A产品采用双断点简单开断灭弧室, 其余均采用塑料栅片灭弧罩, 具有分断能力高、可靠性高的优点;
- ☐ ZHC20-63~630节电产品具有直流通用节电模块, 不仅可以派生消声节能产品或直流操作产品, 而且不占用辅助触头, 从而大大提高了产品的可靠性和寿命。
- ☐ The contact system of the contactor is direct-acting with double breakpoints. For ZHC20-40A and above, the auxiliary contacts are installed on both sides of the main contact as independent components, which are electrically separated;
- ☐ ZHC20-10-25A products may be installed by screws or by 35mm standard card track;
- ☐ ZHC20-10-16A products have double breakpoints to simply break the arc extinguishing chamber, and the rest adopt the plastic grid arc extinguishing chamber, which has the advantages of high breaking capacity and high reliability;
- ☐ ZHC20-63~630 power saving products have the DC general power saving module, which not only can derive silencing energy saving products or DC operated products, but also do not occupy auxiliary contacts, thus greatly improving the reliability and life of products.

外形及安装尺寸 / Outline and installation dimensions



型号 Type	A	B	C	a	b	Φ	l	F _{min}	重量 kg
ZHC20-10	45	67.5	107	35 ± 0.31	55 ± 0.37	5 ± 0.3	7.5 ± 0.19	10	0.35
ZHC20-16	45	73	116.5	35 ± 0.31	55 ± 0.37	5 ± 0.3	7.5 ± 0.29	10	0.43
ZHC20-25	52.5	90.5	122	40 ± 0.31	80 ± 0.37	5 ± 0.3	7.5 ± 0.29	15	0.67
ZHC20-40	86.5	111.5	118	70 ± 0.37	80 ± 0.37	5 ± 0.3	15 ± 0.19	30	0.96
ZHC20-63	116	142	146	100 ± 0.4	90 ± 0.4	5.8 ± 0.3	10 ± 0.29	60	2.9
ZHC20-100	120 ± 1.75	145 ± 2	150 ± 3.15	108 ± 0.435	92 ± 0.435	7 ± 0.58	15 ± 0.38	70	3
ZHC20-160	146	187	178	130 ± 0.5	130 ± 0.5	9 ± 0.58	15.5 ± 0.35	80	5.5
ZHC20-250	190	235	230	160 ± 0.5	150 ± 0.5	9 ± 0.58	17 ± 0.35	100	10.5
ZHC20-400	190	235	230	160 ± 0.5	150 ± 0.5	9 ± 0.58	17 ± 0.35	100	10
ZHC20-630	245	294	272	210 ± 0.575	180 ± 0.5	11 ± 0.7	11 ± 0.7	120	21.5
ZHC20-800-1000	245	294	287	210 ± 0.575	180 ± 0.5	11 ± 0.7	11 ± 0.7	120	21.5

● 低压成套开关柜首选产品

Preferred product for low-voltage switchgear assemblies.



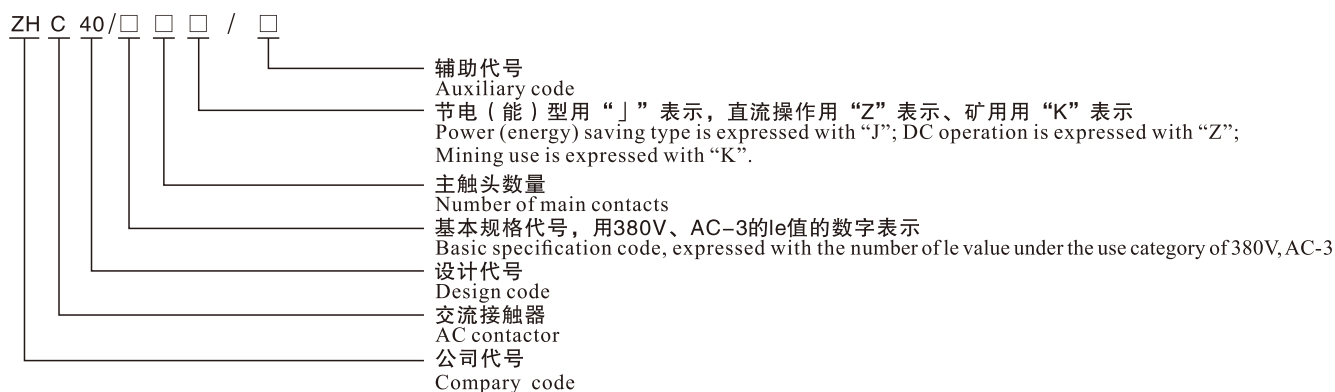
概述 / Overview

ZHC40系列交流接触器主要用于交流50Hz(或60Hz),额定工作电压至690V(或1140V),额定工作电流至1000A的电力线路中接通与分断电路,并可与适当的热继电器或电子式保护装置组合成电动机启动器,以保护可能发生过载的电路。产品符合GB14048.4和IEC60947-4-1等标准。

ZHC40 series AC contactor is mainly used in the electric power circuits with the frequency of AC 50Hz (or 60Hz), the rated working voltage of up to 690V (or 1140V) and the rated working current of up to 1000A for connecting and breaking circuits, and working with the appropriate thermal relay or electronic protection device to form the motor starter to protect the circuits that may be overloaded.

Executive standards: GB14048.4 and IEC60947-4-1, etc.

型号及含义 / Type and meaning



辅助代号共由五部分组成,根据需要按以下顺序选用:

第一部分用字母“Y”表示一般型,可以不写出“N”表示可逆型;

第二部分用1位数字表示主电路极数:3、4分别表示3极、4极,3可以不写出;

第三部分用2位数字表示最高额定工作电压:“06”表示690V,可以不写出。“11”表示1140V;

第四部分表示额定控制电源电压,用字母“AC”表示交流50Hz,“DC”表示直流,字母后用额定控制电源电压的数值表示,但“AC380”可以不写出;

第五部分用字母“F”和2位数字表示辅助触头种类及数量,前一位数字表示常开辅助触头对数,后一位数字表示常闭辅助触头对数,但“F42”可以不写出。

注:该项包括两部分:主触头数量、辅助触头数量。用数字分别表示,如下简图所示:

(-□□-□□)表示:一主触常开数、主触常闭数-辅触常开数、辅触常闭数。

The auxiliary code is composed of 5 parts, which are selected in the following order as needed:

In the first part, “Y” means general type; “N” (can be omitted) means reversible type;

In the second part, 1 digit is used to indicate the number of poles of the main circuit: 3 and 4 respectively indicate 3 and 4 poles, and 3 can be omitted;

In the third part, 2 digits are used to indicate the highest rated working voltage: “06” (which can be omitted) indicates 690V; “11” indicates 1140V;

The fourth part indicates the rated control power supply voltage, with letters “AC” indicating alternating current 50Hz and “DC” indicating direct current. The value of the rated control power supply voltage is behind the letters, but “AC380” can be omitted;

In the fifth part, the letter “F” and two digits are used together to indicate the type and number of auxiliary contacts, of which the first digit indicates the number of pairs of normally open auxiliary contacts and the second digit indicates the number of pairs of normally closed auxiliary contacts, but “F 42” can be omitted.

Note: This item includes two parts, i.e., the number of main contacts and the number of auxiliary contacts, which are indicated by number respectively, as shown in the diagram below:

(-□□-□□) indicates: - number of normally open main contacts, number of normally closed main contacts - number of normally open auxiliary contacts, number of normally closed auxiliary contacts.

正常工作条件和安装条件/Normal working conditions and installation conditions

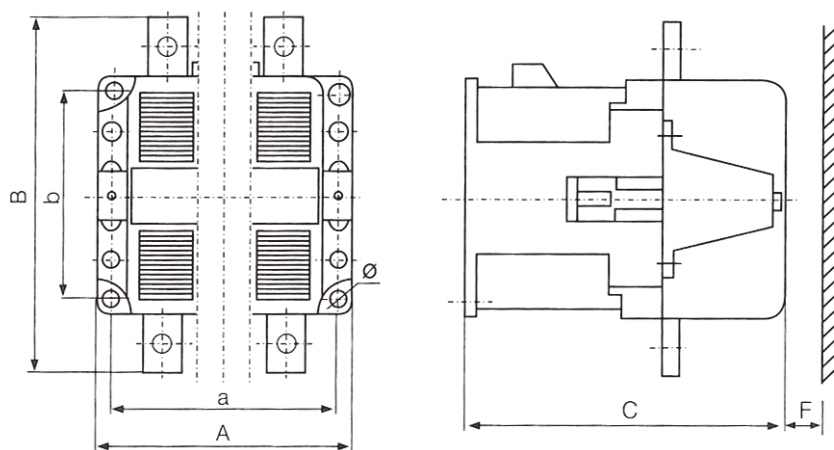
- ☐ 安装地点的海拔不超过2000m;
 - ☐ 周围空气温度上限值不超过+40℃, 下限值不低于-5℃;
 - ☐ 安装地点的空气相对湿度在最高温度为+40℃时不超过50%, 在较低温度下可以有较高的相对湿度, 最湿月的月平均最低温度不超过+20℃, 该月的平均最大相对湿度不超过90%。由于温度变化发生在产品上的凝露情况必须采取措施;
 - ☐ 与垂直面的安装倾斜不超过 $\pm 5^\circ$;
 - ☐ 污染等级: 3级;
 - ☐ 在无显著摇动、冲击和振动的地方。
- ☐ The altitude of the installation site should not exceed 2000m;
 - ☐ The ambient air temperature should not be higher than +40℃ and not be lower than -5℃;
 - ☐ When the highest temperature is +40℃, the relative humidity of the air on the installation site should not be higher than 50%; A higher relative humidity is allowed at a lower temperature; In the wettest month, the monthly average minimum temperature should not exceed +20℃, and the average maximum relative humidity should not exceed 90%. Measures should be taken for condensation on the product due to temperature change;
 - ☐ The inclination between the installation surface and the vertical plane should not exceed $\pm 5^\circ$;
 - ☐ Pollution level: level 3;
 - ☐ The product should be installed in a place without obvious shaking, impact and vibration.

产品结构特点 / Structural features of the product

ZHC40-63~1000交流接触器为开启式正装直动式双断点结构, 辅助触头作为独立组件安装在主触头的两侧, 在电气上为分开的。铁芯为“U”型结构永久性气隙。底座为铝合金压铸(ZHC40-6304及以上), 螺钉安装; 而ZHC40-63~125底座为不饱和聚酯玻璃纤维增强模塑料, 安装方式可以螺钉安装, 也可以用“TH75”导轨安装。灭弧罩采用耐弧塑料加铁质栅片组成, 具有分断能力高, 可靠性高等优点。

ZHC40-63~1000 AC contactor adopts the structure of open type, normal installation, direct acting and double breakpoints. The auxiliary contacts are installed on both sides of the main contact as independent components, which are electrically separated; The iron core is a U-shaped structure with the permanent air gap. The base is made of aluminum alloy die-casting (for ZHC40-6304 and above), which is installed by screws; But, the base of ZHC40-63~125 is made of unsaturated polyester glass fiber reinforced molding compound, which may be installed by screws or by “TH75” guide rail. With the advantages of high breaking capacity and high reliability, etc., the arc extinguishing chamber is made of arc resistant plastic and iron grid.

外形及安装尺寸 / Outline and installation dimensions



ZHC40-63~1000交流接触器外形及安装尺寸

单位:MM

产品型号 Product type	外形尺寸Max Outline dimensions (Max)			安装尺寸 Installation dimensions			安装轨 Installation rail	安装区域F min Installation area F min	
	A	B	C	a	b	Φ		380V	660V
ZHC40-63-125	116	143	154	100	90	5.8	Th75	20	40
ZHC40-160-200	146	186	184	130	130	9	-	30	40
ZHC40-250								40	60
ZHC40-315-400	190	235	230	160	150	9		40	60
ZHC40-500								50	70
ZHC40-630-1250	245	345	288	210	180	11		0	0
ZHC40-63/4~125/4	143	143	154	128	90	5.8	Th75	20	40
ZHC40-63/4~200/4	187	186	184	170	130	9	-	30	40
ZHC40-250-4								40	60
ZHC40-315/4~400/4	236	235	230	216	150	9		40	60
ZHC40-500/4								50	70

主要参数及技术性能 / Main parameters and technical performance

型号规格 Type and specifications	框架代号 Frame code	u V		th A	断续周期工作制下的IeA IeA under intermittent periodic working system				AC-3下的PekW PekW under AC-3	不同断工作制下的IeA IeA under different intermittent working systems						
					AC-1	AC-2	AC-3	AC-4								
ZHC-63	125	690	220	80	80	63	63	63	18.5	80						
			380						30							
ZHC-80			660													
			220													
			380													
			660													
ZHC-100			220	125	125	100	100	100	55	125						
			380						30							
			660													
ZHC-125			220						80		80					
			380						125		125	125				
			660						80		80	110				
		80	80						80							
ZHC-160	250	690	220	250	250	160	160	160	45	250						
ZHC-200			380						75							
			660						125		125	125	110			
			220										55			
			380						200		200	200	90			
			660						125		125	125	110			
ZHC-250			220										75			
			380						250		250	250	132			
			660						125		125	125	110			
ZHC-315			220						500		500	315	315	315	90	500
ZHC-400			380												160	
			660												300	
	220	110														
	380	400	400	400	220											
ZHC-500	660	315	315	315	300											
	220	500	500	500	150											
	380	500	500	400	280											
	660	315	315	315	300											
ZHC-630	1000	690	220	800	630	630	630	200		630						
ZHC-800			380					500							335	
			660					500							500	
ZHC-1000			220					800	800		800	250				
			380					800	800		630	450				
			660					500	500		500	475				
	220		1000	1000	1000	1000	1000	360	1000							
	380							550								
	660							630		630	500	570				
	220											375				
ZHC-1250	380							1250		1250	1250	1250	600	1250		
	660							800		800	600	630				
ZHC-125/11	1250	1140	1140	125	125	40	40	40	55	125						
ZHC-250/11	250		1140	250	250	80	80	80	110	250						
ZHC-500/11	500		1140	500	500	160	160	160	220	500						
ZHC-1000/11	1000		1140	1000	1000		400		600	1000						



概述 / Overview

CJX2系列交流接触器(以下简称接触器), 主要用于交流50Hz或60Hz,电压至690V,在AC-3、400(380)V使用类别下额定工作电流至95A的电路中, 供远距离接通和分断电路、频繁地起动和控制交流电动机之用, 并可与适当的热继电器组成电磁起动器以保护可能发生操作过负荷的电路。

符合标准: GB/T-14048.4-2020, IEC60947-1(1999), IEC 947-4-1。

CJX2 series AC contactor (hereinafter referred to as the contactor) is mainly used in the circuits with the frequency of AC 50Hz or 60Hz, the voltage of up to 690V, and the rated working current of up to 95A under the use categories of AC-3 and 400(380)V for connecting and breaking circuits remotely, frequently starting and controlling AC motors, and working with the appropriate thermal relay to form the electromagnetic starter to protect the circuits that may be overloaded.

Executive standards: GB/T-14048.4-2020, IEC60947-1(1999), IEC 947-4-1.

型号及含义 / Type and meaning



注1:

09A-95A以辅助触头的形式, 115A-800A以极数形式
10表示三常开主触头, 一常开辅助触头(32A及以下);
01表示三常开主触头, 一常闭辅助触头(32A及以下);
11表示三常开主触头, 一常开一常闭辅助触头(40A及以上)。

Note 1:

09A-95A adopts the number of auxiliary contacts, while 115A-800A adopts the number of poles.
10 means three normally open main contacts and one normally open auxiliary contact (32A and below);
01 means three normally open main contacts and one normally closed auxiliary contact (32A and below);
11 means three normally open main contacts, one normally open auxiliary contact and one normally closed auxiliary contact (40A and above).

正常工作条件和安装条件/Normal working conditions and installation conditions

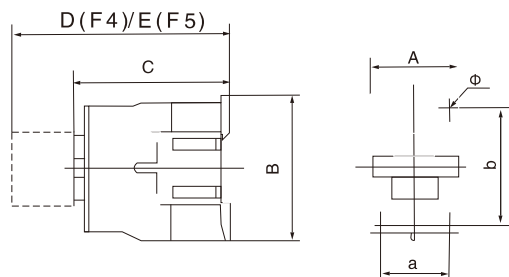
- ☐ 周围空气温度为：-5℃~+40℃，24小时内其平均值不超过+35℃；
- ☐ 海拔高度：不超过2000m；
- ☐ 大气条件：最高温度+40℃，时空气的相对湿度不超过50%；在较低温度下可以允许有较高的相对湿度，例如20℃。时达90%。对由于温度变化偶尔产生的凝露应采取特殊的措施；
- ☐ 污染等级：3级；
- ☐ 安装类别：III类；
- ☐ 安装条件：安装面与垂直面倾斜度不大于±5°；
- ☐ 冲击振动：产品应安装和使用在无显著摇动、冲击和振动的地方。
- ☐ The ambient air temperature should be -5℃~+40℃, with the average temperature of no higher than +35℃ within 24 hours.
- ☐ Altitude: not higher than 2000m;
- ☐ Atmospheric conditions: when the highest temperature is +40℃, the relative humidity of the air should not be higher than 50%; A higher relative humidity is allowed at a lower temperature, such as 90% under 20℃. Special measures should be taken for occasional condensation due to temperature change;
- ☐ Pollution level: level 3;
- ☐ Installation category: category III;
- ☐ Installation condition: the inclination between the installation surface and the vertical plane should not exceed ±5°;
- ☐ Impact vibration: the product should be installed and used in a place without obvious shaking, impact and vibration.

主要参数及技术性能 /Main parameters and technical performance

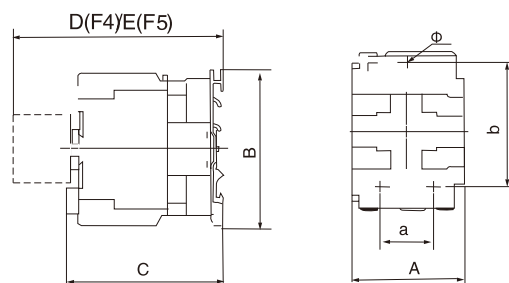
接触器的主要参数及技术性能指标 Main parameters and technical performance index of contactor

型号Type			CJX2-09	CJX2-12	CJX2-18	CJX2-25	CJX2-32	CJX2-40	CJX2-50	CJX2-65	CJX2-80	CJX2-95
额定工作电流 Rated working current	400(380)V	AC-3	9	12	18	25	32	40	50	65	80	95
		AC-4	3.5	5	7.7	8.5	12	18.5	24	28	37	44
	690(660)V	AC-3	6.6	8.9	12	18	21	34	39	42	49	49
		AC-4	1.5	2	3.8	4.4	7.5	9	12	14	17.3	21.3
约定自由空气发热电流 Conventional free air thermal current			20	20	32	40	50	60	80	80	95	95
额定绝缘电压 Rated insulation voltage			690	690	690	690	690	690	690	690	690	690
可控三相鼠笼 电动机功率(AC-3)kW Controllable three-phase squirrel cage motor power (AC-3) kW		230(220)V	2.2	3	4	5.5	7.5	11	15	18.5	22	25
		400(380)V	4	5.5	7.5	11	15	18.5	22	30	37	45
		690(660)V	5.5	7.5	10	15	18.5	30	37	37	45	45
操作频率(次/h) Operating frequency (times /h)	电寿命机械寿命 Electrical endurance, mechanical endurance	AC-3	1200	1200	1200	1200	600	600	600	600	600	600
		AC-4	300	300	300	300	300	300	300	300	300	300
			3600	3600	3600	3600	3600	3600	3600	3600	3600	3600
电寿命(万次) Electrical endurance (10,000 times)	AC-3		100	100	100	100	80	80	60	60	60	60
	AC-4		20	20	20	20	20	15	15	15	10	10

外形及安装尺寸 / Outline and installation dimensions



CJX2-09~32外形及安装尺寸
Outline and installation dimensions of CJX2-09~32



CJX2-40~95外形及安装尺寸
Outline and installation dimensions of CJX2-40~95

接触器型号 Contactor type	A max	B max	C max	D max	E max	a	b	Φ
CJX2-09~12	47	76	82	120.5	140.5	34/35	56/60	4.5
CJX2-18	47	76	87	125.5	145.5	34/35	50/60	4.5
CJX2-25	57	86	95	133.5	153.5	40	48	4.5
CJX2-32	57	86	100	138.5	158.5	40	48	4.5
CJX2-4011~6511	77	129	116	154.5	174.5	40	105	6.5
CJX2-4004~6504	84	129	116	154.5	174.5	40	105	6.5
CJX2-4008~6508	84	129	127	154.5	174.5	40	105	6.5
CJX2-8011~9511	87	129	127	165.5	185.5	40	105	6.5
CJX2-8004~9504	96	129	122	160.5	180.5	40	105	6.5
CJX2-8008~9508	96	129	135	160.5	180.5	40	105	6.5



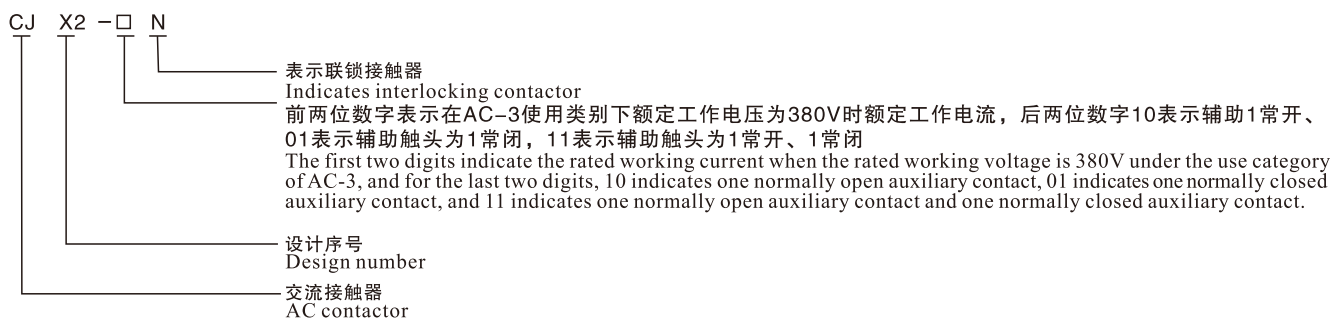
概述 / Overview

CX2-N系列联锁接触器主要用于交流.50Hz(或60Hz)、额定绝缘电压至690V,在AC-3使用类别下,额定工作电压380V时额定工作电流至954A的电路中,作控制可逆运转或可反向制动的电动机以及双电源控制,并可与适当的热继电器组成电磁起动器,以保护可能发生过载的电路。产品符合GB14048.4和IEC60947-4-1等标准。

CX2-N series interlocking contactor is mainly used in the circuits with the frequency of AC 50Hz (or 60Hz), the rated insulation voltage of up to 690V, and the rated working current of up to 954A when the rated working voltage is 380V under the use category of AC-3 for controlling reversibly operating or reversibly braking motors and dual power supply control, and working with the appropriate thermal relay to form the electromagnetic starter to protect the circuits that may be overloaded.

Executive standards: GB14048.4 and IEC60947-4-1, etc.

型号及含义 / Type and meaning



正常工作条件和安装条件/Normal working conditions and installation conditions

- ☐ 安装地点的海拔不超过2000m;
- ☐ 周围空气温度上限值不超过+40℃, 下限值不低於-5℃;
- ☐ 安装地点的空气相对湿度在最高温度为+40℃时不超过50%, 在较低温度下可以有较高的相对湿度, 最湿月的月平均最低温度不超过+20℃, 该月的平均最大相对湿度不超过90%。由于温度变化发生在产品上的凝露情况必须采取措施;
- ☐ 与垂直面的安装倾斜不超过±22.5°;
- ☐ 污染等级:3级;
- ☐ 在无显著摇动、冲击和振动的地方。
- ☐ The altitude of the installation site should not exceed 2000m;
- ☐ The ambient air temperature should not be higher than +40℃ and not be lower than -5℃;
- ☐ When the highest temperature is +40℃, the relative humidity of the air on the installation site should not be higher than 50%; A higher relative humidity is allowed at a lower temperature; In the wettest month, the monthly average minimum temperature should not exceed +20℃, and the average maximum relative humidity should not exceed 90%. Measures should be taken for condensation on the product due to temperature change;
- ☐ The inclination between the installation surface and the vertical plane should not exceed ±22.5°;
- ☐ Pollution level: level 3;
- ☐ The product should be installed in a place without obvious shaking, impact and vibration.

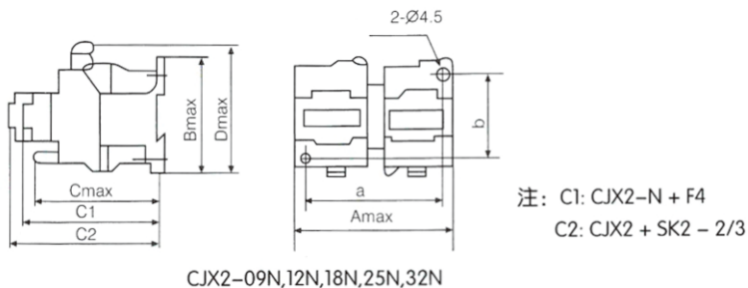
产品结构特点 / Structural features of the product

- ☐ 动作机构为直动式，触头为双断点。
☐ 具有组合功能，除安装面外，其它各面均能加装附件。
☐ 两侧可加装辅助触头组。
☐ 上方可加装备辅助触头组或空气延时头。
☐ 线圈接线端加装时间延时器等各种功能模块。
☐ 机械和电气双重联锁。
- ☐ The action mechanism is of direct-acting type, and the contact is of double breakpoints.
☐ With the combination function, all surfaces except for the installation surface may be additionally provided with accessories.
☐ Auxiliary contact sets may be additionally installed on both sides.
☐ Auxiliary contact sets or air damping type time relays may be additionally installed on the upper side.
☐ The coil terminal may be additionally provided with various functional modules such as time delay units.
☐ Both mechanical and electrical interlocking can be achieved.

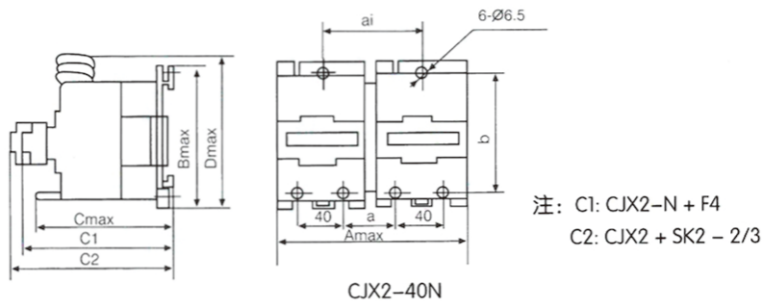
主要参数及技术性能 / Main parameters and technical performance

型号 Type			CJ X 2-09N	CJX 2-12N	CJX 2-18N	NCJX 2-25N	CJX 2-32N	CJX 2-40N	CJX 2-50N	CJX 2-65N	CJX 2-80N	CJX 2-95N
额定工作电流A Rated working current A		380V	9	12	18	25	32	40	50	65	80	95
		660V	20	8.9	12	18	21	34	39	42	49	55
约定发热电流It hA Conventional thermal current It hA			20	20	32	40	50	60	80	80	125	125
额定工作电压U eV Rated working voltage U eV			380									
额定绝缘电压U iV Rated insulation voltage U iV			690									
AC-3	电寿命10*次 Electrical endurance 10* times		100	100	100	100	80	80	80	80	60	60
	操作频率次/h Operating frequency times /h		1200	1200	1200	1200	600	600	600	600	600	600
AC-4	电寿命10*次 Electrical endurance 10* times		20	20	20	20	20	15	15	15	10	10
	操作频率次/h Operating frequency times /h		300	300	300	300	300	300	300	300	300	300
	额定工作电流IeA Rated working current IeA	380V	3.5	5	7.7	8.5	12	18.5	24	28	37	44
		660V	1.5	2	2.8	4.4	7.5	9	12	14	17.3	21.3
辅助触头 Auxiliary contact	电寿命 Electrical endurance	AC-15I360VA	同主触头电寿命(AC-3) The same as the electrical endurance of the main contact (AC-3)									
		DC-13(33W]										
	可接通最小负载 Minimum load for connection		6V10mA									
线圈 Coil	额定控制电压UsV Rated control voltage UsV		24、48、110、220、380									
	吸合电压 Pull-in voltage		(0.85~1.10)Us									
	释放电压 Release voltage		(0.20~0.75)Us									
	线圈功率 Coil power	吸合 Pull-in	70	70	70	110	110	200	200	200	200	200
		保持 Holding	8	8	8	11	11	20	20	20	20	20

外形及安装尺寸 / Outline and installation dimensions



联锁接触器型号 Interlocking contactor type	A max	Bmax	Cmax	Dmax	C1	C2	a	b
CJX2-09N, 12N	112	76	87	86	115	134	96	50
CJX2-18N	112	76	92	86	120	139	96	
CJX2-25N	134	86	102	98	130	149	112	60
CJX2-32N	134	86	120	100	135	154	112	



联锁接触器型号 Interlocking contactor type	A max	Bmax	Cmax	Dmax	C1	C2	a	ai	b
CJX2-10N, 50N, 65N	176	128	145	138	149	168	49	90 ± 0.70	100 110
CJX2-80N, 95N	190	128	162	146	160	179	56	90 ± 0.70	100 110

验证交流接触器接线端子机械强度的拧紧力矩

Tightening torque for verifying mechanical strength of connection terminal of AC contactor

基本规格 Basic specification	螺纹直径mm Thread diameter mm	拧紧力矩N Tightening torque N
9~12	3.5	0.8
16~25	4	1.2
21~50	6	2.5
63~125	6	3.0
160~250	8	6.0
315~500	10	10.0
630~1000	12	14.0



概述 / Overview

CJX2F直动式交流接触器主要用于交流50Hz(或60Hz),额定工作电压至1000V,额定工作电流至1400A的电力系统中,远距离接通,分断电路和起动,停止、反向及反接制动电动机。

本系列接触器符合标准: GB/T14048.1-2000, GB14048.4-93, IEC60947-1(1999), IEC947-4-1。

本系列接触器有CJX2-F115、150、185、225、265、330、400、500、630、780、1200、1400十二个规格,其外形和安装尺寸与LC1-D、LC1-F相同。

CJX2-F115-780接触器还可以作为直流接触器使用。(须和本公司联系)。

CJX2F direct-acting AC contactor is mainly used in the electrical power systems with the frequency of AC 50Hz (or 60Hz), the rated working voltage of up to 1000V, and the rated working current of up to 1400A for remote connection and breaking of circuits, as well as starting, stopping, reversing and reverse connection of brake motors.

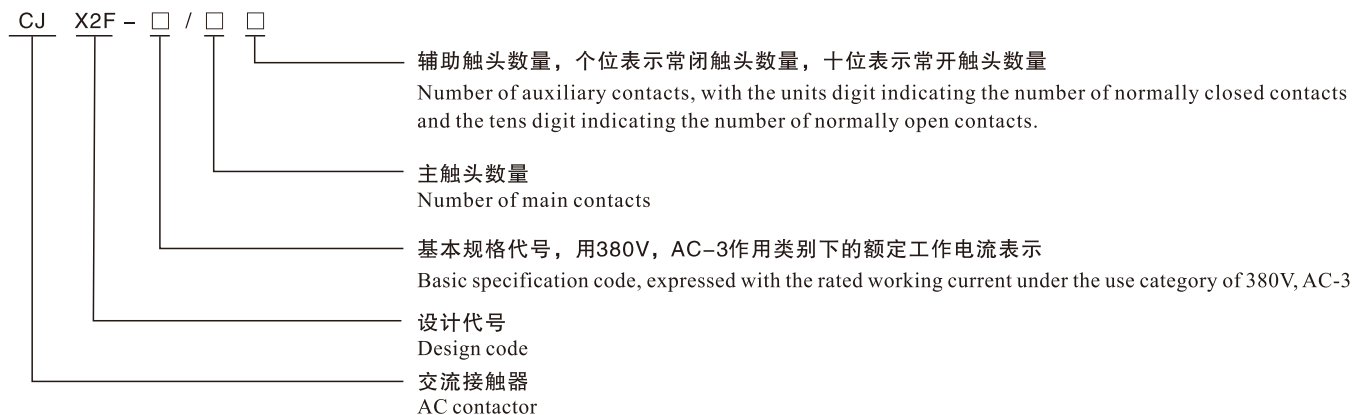
Executive standards: GB/T14048.1-2020, IEC60947-1(1999), IEC947-4-1.

There are 12 specifications for this series of contactors, including CJX2-F115, 150, 185, 225, 265, 330, 400, 500, 630, 780, 1200 and 1400. The outline and installation dimensions of this series of contactors are the same as those of LC1-D and LC1-F.

CJX2-F115-780 contactors can also be used as DC contactors.

(Please contact the Company).

型号及含义 / Type and meaning



产品结构特点 / Structural features of the product

- 结构简单紧凑，独特新颖，功能模块化，组装积木化。
- 线圈采用塑料封装，工艺先进，外型美观，绝缘强度高，机械强度高。
- CJX2-F115~780-1200-1400线圈和静铁芯组成抽屉，只需按下按钮就可装入或抽出，维修方便。
- 灭弧罩采用高强度塑料压制而成，机械强度高，灭弧性能好，且采用锁杆旋转压缩弹簧固定，方便可靠。
- 辅助触头数量多且更换方便，CJX2-F115~780~1200~1400接触器线圈上带有一个专用辅助触头供自锁转换直流控制，还可加装两个辅助触头组共8对辅助触头，辅助触头组安装不用螺钉固定，只要沿导轨，一推，听到“咔嚓”一声即可。如果需用空气延时头时，可直接用其换下辅助触头组即可。
- 接触器节电效果明显。CJX2-F400-780~1200-1400为交流输入直流控制。
- 接触器机械联锁简单可靠，可使两台接触器横向联锁，CJX2-F115~630还可实现两台接触器竖向联锁和三台接触器的竖向互相联锁。
- It has simple, compact, new and unique structure, with modular function and assembly modularization.
- The coil is packaged in plastic, with advanced technology, beautiful appearance, good insulation strength and high mechanical strength.
- For CJX2-F115~780-1200-1400, coil and static iron core form a drawer for pushing in and pulling out by pressing the button and thus for easy repair.
- The arc extinguishing chamber is made of high-strength plastic, which has high mechanical strength and good arc extinguishing performance, and is fixed by locking bar rotating compression spring, which is convenient and reliable.
- There are many auxiliary contacts, which are replaced easily. For CJX2-F115~780~1200~1400 contactors, the coil is provided with a special auxiliary contact for DC control of self-locking conversion. It is allowed to additionally install two auxiliary contactor sets so that there are 8 pairs of auxiliary contactors. The auxiliary contactor sets are installed only along the guide rail, with no need of screws. Give it a push, when you hear a click, the auxiliary contactor sets are installed successfully. If the air damping type time relay is required, it can be used directly to replace the auxiliary contact set.
- The contactor can save electricity significantly. CJX2-F400-780~1200-1400 features AC input and DC control.
- The mechanical interlocking of the contactor is simple and reliable. Two contactors can be interlocked horizontally. CJX2-F115~630 contactors can also realize vertical interlocking of two contactors and vertical interlocking between three contactors.

主要参数及技术性能 / Main parameters and technical performance

- 动作性能：吸合电压为85%~110%Us，释放电压对于交流线圈为20%~75%Us，对于直流线圈为10%~75%Us。
- 圈的控制电压：CJX2-F115~780~1400 交流127,220,380V 直流110,220V，也可供其它任何电压的线圈。
- 接触器适用的短路保护电器推荐为NT系列熔断器
- Action performance: the pull-in voltage is 85%~110% Us; the release voltage is 20%~75% Us for AC coils and 10%~75% Us for DC coils.
- Control voltage of coils: AC 127, 220, 380V and DC 110, 220V for CJX2F-115~780~1400; Coils of any other voltage are also supported.
- NT series fuses are recommended as the suitable short-circuit protection appliances of the contactor.

接触器技术参数见下表

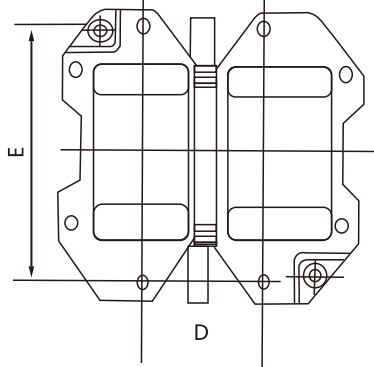
For technical parameters of contactor, please refer to the table below.

型号 Type		CJX2-F115	CJX2-F150	CJX2-F185	CJX2-F225	CJX2-F265	CJX2-F330	CJX2-F400	CJX2-F500	CJX2-F630	CJX2-F780
额定绝缘电压 Rated insulation voltage		1000									
约定发热电流 Conventional thermal current		200	250	275	315	350	400	500	700	1000	1500
AC-3使用类别下 工作电流 Working current under the use category of AC-3	380V	115	150	185	225	265	330	400	500	335	780
	660V	65	80	95	115	150	185	225	265	225	450
	1000V	40	50	65	80	95	115	150	185	320	300
AC-3使用类别下控制电 动机功率 Control motor power under the use category of AC-3	380V	55	75	90	110	132	165	200	250	335	400
	660V	80	110	110	129	160	220	280	335	450	475
	1000V	65	65	100	100	147	160	185	335	425	450

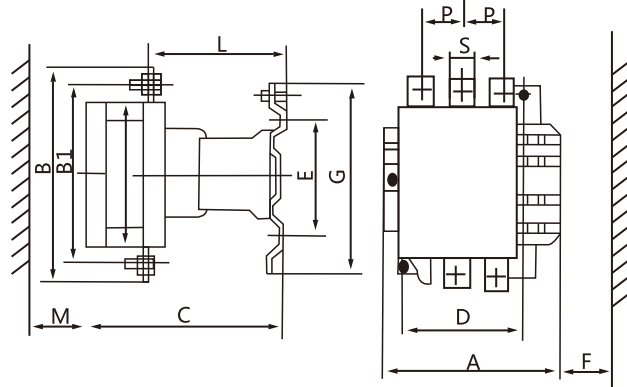
外形及安装尺寸 / Outline and installation dimensions

注:1)M为飞弧距离 2)F为更换线圈所需空间Note: 1)

Notes: 1) M is the flashover distance; 2) F is the space required for replacement of coils.



CJX2-F400~500外形尺寸 图3
Outline dimensions of CJX2-F400~500 Fig. 3



CJX2-F630外形及安装尺寸 图4
Outline and installation dimensions of CJX2-F630 Fig. 4

型号 Type	极数	A	B	C	D G	E	F2)	G b1	H N	M')	P	S	B1 M	安装螺钉 Mounting screw
CJX2-F115	3极	163.5	162	171	80	113	131	137	124	40	37	20	147	M6
	4极	200.5	162	171	80	113	131	137	124	40	37	20	147	M6
CJX2-F150	3极	163.5	172	171	80	113	131	137	124	40	40	20	150	M6
	4极	200.5	172	171	80	113	131	137	124	40	40	20	150	M6
CJX2-F185	3极	168.5	174	181	80	113	131	137	127	40	40	20	154	M6
	4极	208.5	174	181	80	113	131	137	127	40	40	20	154	M6
CJX2-F225	3极	168.5	197	181	80	113	131	137	127	50	48	25	172	M6
	4极	208.5	197	181	80	113	131	137	127	50	48	25	172	M6
CJX2-F265	3极	201.5	203	213	96	113	147	145	147	50	48	25	178	M6
	4极	224.5	203	213	96	113	147	145	147	50	48	25	178	M6
CJX2-F330	3极	213	206	219	96	113	147	145	158	60	48	25	181	M6
	4极	261	209	219	96	113	147	145	158	60	48	25	181	M6
CJX2-F400	3极	213	209	219	80	175	119	209	158	60	48	25	181	M8
	4极	261	209	219	80	175	119	209	158	60	48	25	181	M8
CJX2-F500	3极	233	238	232	80	175	141	209	158	70	55	30	208	M8
	4极	288	238	232	140	175	141	209	158	70	55	30	208	M8
CJX2-F630	3极	309	304	255	180	185	181	280	202	80	40	40	264	M10
	4极	389	304	255	240	185	181	280	202	80	40	40	264	M10



概述 / Overview

CJX2D直动式交流接触器主要用于交流50Hz(或60Hz),额定工作电压至1000V,额定工作电流至1400A的电力系统中,远距离接通,分断电路和起动,停止、反向及反接制动电动机。

本系列接触器符合标准: GB/T14048.1-2000, GB14048.4-93, IEC60947-1(1999), IEC947-4-1。

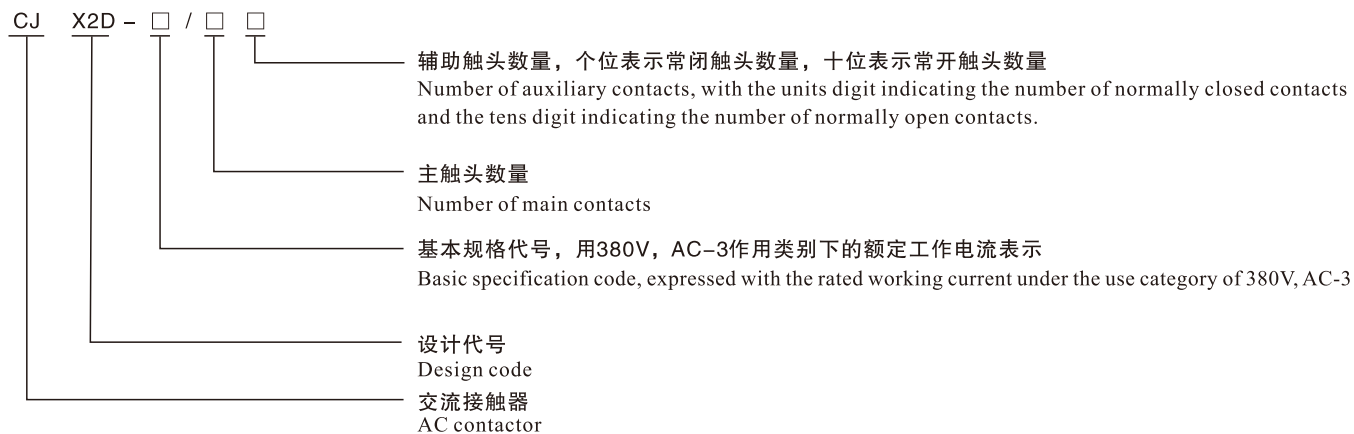
本系列接触器有CJX2-D115、150、170、205、245、300、410、475、620九个规格。

CJX2D direct-acting AC contactor is mainly used in the electrical power systems with the frequency of AC 50Hz (or 60Hz), the rated working voltage of up to 1000V, and the rated working current of up to 1400A for remote connection and breaking of circuits, as well as starting, stopping, reversing and reverse connection of brake motors.

Executive standards: GB/T14048.4-2020, , IEC60947-1(1999), IEC947-4-1.

There are nine specifications for this series of contactors, including CJX2-D115, 150, 170, 205, 245, 300, 410, 475, 620.

型号及含义 / Type and meaning



主要参数及技术性能 / Main parameters and technical performance

型号Type		单位Unit	CJX2-D115		CJX2-D150		CJX2-D170	CJX2-D205
额定电流 Rated current		A	115		150		170	205
额定发热电流 Rated thermal current		A	200		220		250	275
额定功率3相电机 3-phase motor with rated power	220/240V	KW	30		40		55	63
	380/400V	KW	55		75		90	1110
	400V	KW	59		80		100	110
	500V	KW	75		90		110	120
	600/690V	KW	80		100		110	129
	1000V	KW	75		90		100	100
额定功率3相电机 3-phase motor with rated power	200/230V	KW	9		11		22	25
	380V/400V	KW	18.5		22		40	45
	440V	KW	18.5		22		45	51
	500V	KW	30		37		51	59
重量 Weight		Kg	2.25		2.25		2.25	4.6
体积 LxWxH Volume		mm	132x120x158		132x120 × 158		132x120x158	168.5x174 × 181
电源连接导线截面 Power connection wire section		mm	120		120		120	150/225x3
安装螺钉 导轨轨数 X轨中心距 Mounting screw Number of guide rails X rail center distance		mm	130 × (95 – 110) – 6.5 2x35x100		130 × (95 – 110) – 6.5 2x35x100		130x(95 – 100) – 6.5 2x35x100	(106 – 120)x80 – 6.5
参考型号 Reference type			CJ X 2–D 115		CJ X 2–D 150		CJ X 2–D 170	CJ X 2–D 205
控制电路电压 Control circuit voltage	AC50HZ	V	24(B5)	42(D5)		48(E5)	110(E5)	220(M5)
	AC60HZ	V	24(B6)	42(D6)		48(E6)	110(E6)	220(M6)
	AC50/AC60	V	24(B7)	42(D7)		48(E7)	110(E7)	220(M7)
	DC	V	24(BD)	42(D8)		48(E8)	72(ND)	110(FD)

型号Type	单位Unit	CJX2-D245	CJX2-D300	CJX2-D410	CJX2-D475	CJX2-D620
额定电流 Rated current	A	245	300	410	475	620
额定发热电流 Rated thermal current	A	315	400	500	700	1000
额定功率3相电机 3-phase motor with rated power	220/240V	KW	75	100	110	147
	380/400V	KW	132	160	220	265
	400V	KW	135	200	250	280
	500V	KW	160	200	250	335
	600/690V	KW	160	220	280	355
	1000V	KW	147	160	185	355
额定功率3相电机 3-phase motor with rated power	200/230V	KW	30	37	40	45
	380V/400V	KW	55	63	75	80
	440V	KW	63	75	80	100
	500V	KW	75	80	90	110
	500V	KW	75	80	90	110
重量 Weight	Kg	4.7	8.2	8.5	10.8	17.4
体积LxWxH Volume	mm	168.5x197x181	213x206 × 219	213 × 206x219	232x238 × 233	309 × 304 × 255
电源连接导线截面 Power connection wire section	mm ²	185/225 × 4	240/225 × 5	2x15030x5	2x20040x5	2040 × B/260x5
安装螺钉 导轨导轨数X轨 中A心距 Mounting screw Number of guide rails X rail center distance	mm	(106–120)x96–6.5	(106–120)x96–6.5	180x80066–102–8.5	180 × 80166–102–8.5	180x180100–195–10.5
参考型号 Reference type		CJX2-D245	CJX2-D300	CJX2-D410	CJX2-D475	CJX2-D620
控制电路电压 Control circuit voltage	AC50HZ	V	240(U5)	400(V5)	440(R5)	
	AC60HZ	V	240(U6)	400(V7)	440(R6)	
	AC50/AC60	V	240(U7)		440(R7)	500IS5
	DC	V	240(GDI)	250(V5)	440(RD)	600(Y5)

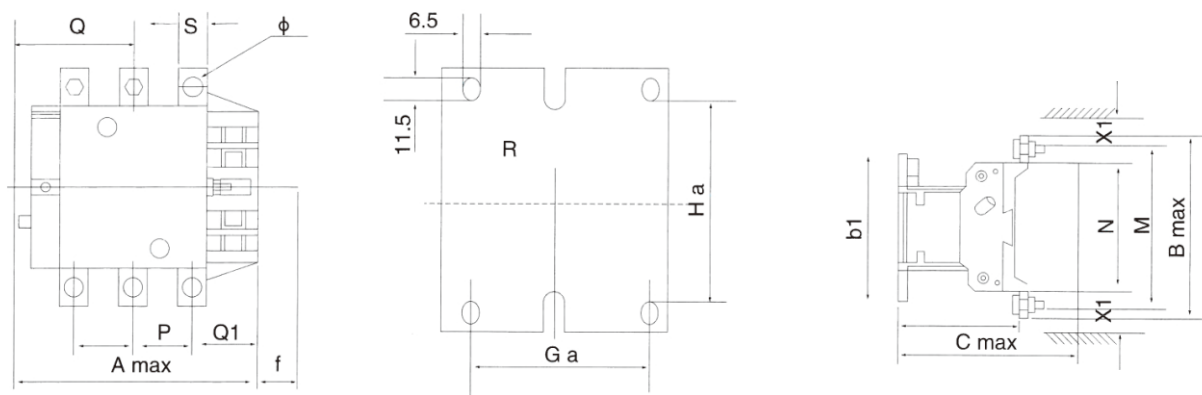
外形及安装尺寸 / Outline and installation dimensions

用于CJX2-D115-620

Used for CJX2-D115-620

型号 Type	A	B	C	b1	P	Q	S	Q1
CJX2-D115	158	120	132	158	35	60	18	25
CJX2-D150	158	120	132	158	35	60	18	25
CJX2-D170	158	120	132	158	35	60	18	25
CJX2-D205	168.5	174	181	137	40	69	20	59.4
CJX2-D245	168.5	197	181	137	48	69	25	51.5
CJX2-D300	213	206	219	145	48	91	25	74
CJX2-D410	213	206	219	209	48	91	25	74
CJX2-D475	233	238	232	209	55	108	30	77

型号 Type	M	N		中	Ga	Ha
CJX2-D115	134	96.5	75	M6		
CJX2-D150	134	96.2	75	M6		
CJX2-D170	134	96.2	75	M6		120-106
CJX2-D205	154	127	113.5	M8	80	120-106
CJX2-D245	172	127	113.5	M10	80	120-106
CJX2-D300	181	158	145	M10	80	120-106
CJX2-D410	181	158	145	M10	80	120-106
CJX2-D475	208	172	146	M10	80	180
CJX2-D620/1000	264	202	155	M12	80	180



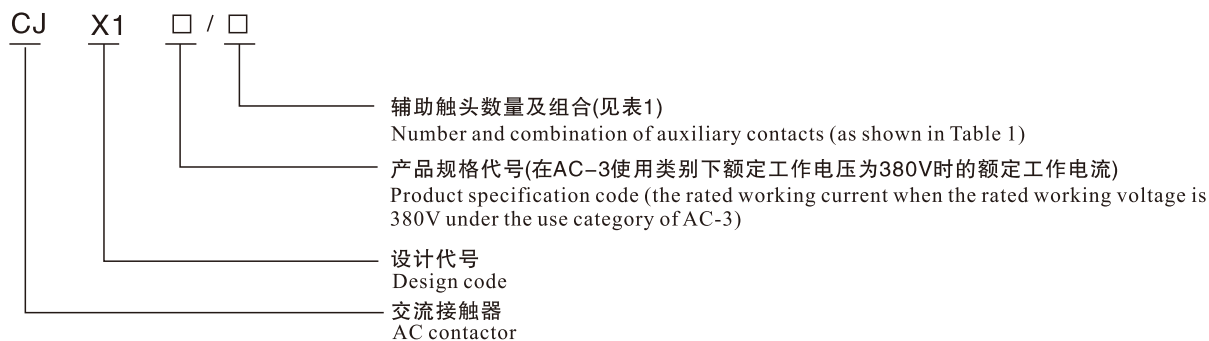


概述 / Overview

CJX1系列交流接触器（以下简称接触器）主要用于交流50（或60）Hz，额定工作电压到660V，在AC-3使用类别下，额定工作电压380V额定工作电流至400A的电路中，供远距离接通和分断电路，并可与JRS2（3UA5）相应型号热继电器组成电磁起动器，以保护可能发生的操作过负荷的电路。

CJX1 series AC contactor (hereinafter referred to as the contactor) is mainly used in the circuits with the frequency of AC 50Hz (or 60Hz), the rated working voltage of up to 660V and the rated working current of up to 400A when the rated working voltage is 380V under the use category of AC-3 for connecting and breaking circuits remotely, and working with the JRS2(3UA5) thermal relay of the corresponding model to form the electromagnetic starter to protect circuits that may be overloaded.

型号及含义 / Type and meaning



正常工作条件和安装条件/ Normal working conditions and installation conditions

- ☐ 海拔不超过2000m;
- ☐ 周围空气温度为-5℃~+40℃, 24h内平均值不超过+35℃;
- ☐ 最高温度为+40℃时, 空气的相对湿度不超过50%; 在较低的温度下允许有较高的相对湿度, 例如+20℃时不大于90%, 对由于温度变化偶尔产生的凝露应采取特殊的措施。
- ☐ 污染等级: 3级;
- ☐ 安装类别: 安装类别为Ⅲ;
- ☐ 安装条件: 安装面与垂直面的倾斜度不大于±5°;
- ☐ 安装在无显著震动和冲击振动的地方。
- ☐ Altitude: not higher than 2000m;
- ☐ The ambient air temperature should be -5℃ ~+40℃, with the average temperature of no higher than +35℃ within 24 hours.
- ☐ When the highest temperature is +40℃, the relative humidity of the air should not be higher than 50%; A higher relative humidity is allowed at a lower temperature, such as not higher than 90% under +20℃. Special measures should be taken for occasional condensation due to emperature change;
- ☐ Pollution level: level 3;
- ☐ Installation category: category III;
- ☐ Installation condition: the inclination between the installation surface and the vertical plane should not exceed ±5°;
- ☐ The product should be installed in a place without obvious shaking, impact and vibration.

主要参数及技术性能 / Main parameters and technical performance

型号Type			CJX1 -9	CJX1 -12	CJX1 -16	CJX1 -22	CJX1 -32	CJX1 -45	CJX1 -63	CJX1 -75	CJX1 -85	CJX1 -110	CJX1 -140	CJX1 -170	CJX1 -205	CJX1 -250	CJX1 -300	CJX1 -400	
额定绝缘电压U iV Rated insulation voltage U iV			660																
额定工作电流 Ie(A) Rated working current Ie(A)	AC-3	380	9	12	16	22	32	45	63	75	85	110	140	170	205	250	300	400	
		660	7.2	9.5	13.5	18.5	18	45	63	75	75	110	110	170	170	200	250	320	
	AC-4	380	3.3	4.3	7.7	8.5	12	24	28	4	42	54	68	75	96	110	125	150	
		660	1.4	1.9	3.5	4	7.5	12	14	17	21	27	35	42	67	95	110	115	
可控制功率 Pe(kW) Controllable power Pe(kW)	AC-3	380	4	5.5	7.5	11	15	22	30	37	45	55	75	90	110	132	160	200	
		660	5.5	7.5	11	11	15	37	55	55	55	90	90	160	160	185	220	315	
	AC-4	380	1.5	22	4	4	5.5	11	11	18.5	22	30	37	37	45	55	55	75	
		660	11	15	3	4	7.5	11		15	18.5	22	30	37	55	75	90	110	
约定发热电流≥Ith Conventional thermal current ≥ Ith		A	20		30		45		70		90		150		170	205	250	300	400
额定操作频率次/h Rated operating frequency times /h		AC-3	1200				600								300				
		AC-4	300								150								
机械寿命(万次) Mechanical endurance (10,000 times)			1000				800				600								
电寿命(万次) Electrical endurance (10,000 times)		AC-3	100				80		60										
		AC-4	20				15		10										
配熔断器规格(RT16)A Specification of matched fuse (RT16)A			16	20	25	32	50	80	100	125	160	200	200	250	250	300	400	500	

接触器额定控制电源电压U_s为交流50/60Hz: 36/42、48/58、110/132、127/152、220/264、380/456 (V)。接触器线圈在额定控制电源电压的85%~110%能可靠吸持, 在额定控制电源电压的20%~75%内能可靠释放。

辅助电路的额定绝缘电压(U_i)为660V, 约定发热电流(I_{th})为10A, 其他参数见表3。

The rated control power supply voltage U_s of the contactor at AC 50/60 Hz is: 36/42, 48/58, 110/132, 127/152, 220/264, 380/456(V).

The contactor coil can reliably hold at 85%~110% of the rated control power supply voltage, and can reliably release at 20%~75% of the rated control power supply voltage.

For the auxiliary circuit, the rated insulation voltage (U_i) is 660V; the conventional thermal current (I_{th}) is 10A; Other parameters are shown in Table 3.

使用类别 Use category	额定工作电压U _e V Rated working voltage U _e V	额定工作电流I _e V Rated working current I _e V	额定控制功率 Rated control power	
			交流VA AC VA	直流W DC W
AC-15	36	10	360	
	110	3.2		
	220	1.64		
	380	0.95		
DC-13	48	0.69		33
	110	0.3		
	220	0.15		

外形及安装尺寸 / Outline and installation dimensions

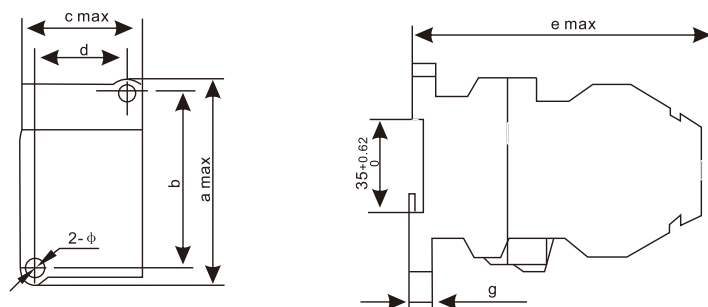


图1 CJX1-9/32外形尺寸及安装尺寸
Fig. 1 Outline and installation dimensions of CJX1-9/32

型号Type	a max	b	cmax	d	emax	g	中
CJX1-9/12	79	60 ± 0.60	46	35 ± 0.50	106	8	+0.48
CJX1-16/22	89	75 ± 0.60	46	35 ± 0.50	116	8	4.8
CJX1-32	90	75 ± 0.60	74	50 ± 0.550	109	8	.+0.48

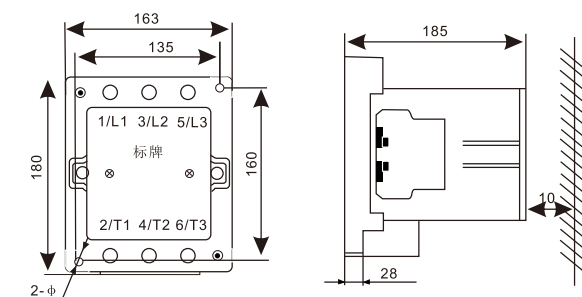


图3 CJX1-170/205外表尺寸及安装尺寸
Fig. 3 Outline and installation dimensions of CJX1-170/205

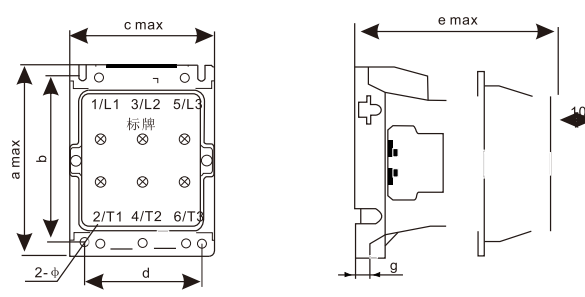


图4 CJX1-250/475外形尺寸及安装尺寸
Fig. 4 Outline and installation dimensions of CJX1-250/475

型号Type	a max	b	cmax	d	emax	g	中
CJX1-170/205	180	160	163	135	185	28	8
CJX1-250/300	200	145	172	120	198	30.5	10.5
CJX1-400/475	200	160	187	130	222	39	10.5

型号Type	a max	b	cmax	d			中
CJX1-45/63	120	100 ± 0.70	92	70 ± 0.60	125	20	+0.48
CJX1-75/85	135	110 ± 0.70	105	80 ± 0.60	145	20	+0.48
CJX1-110/140	158	130 ± 0.80	125	100 ± 0.70	155	30	+0.48

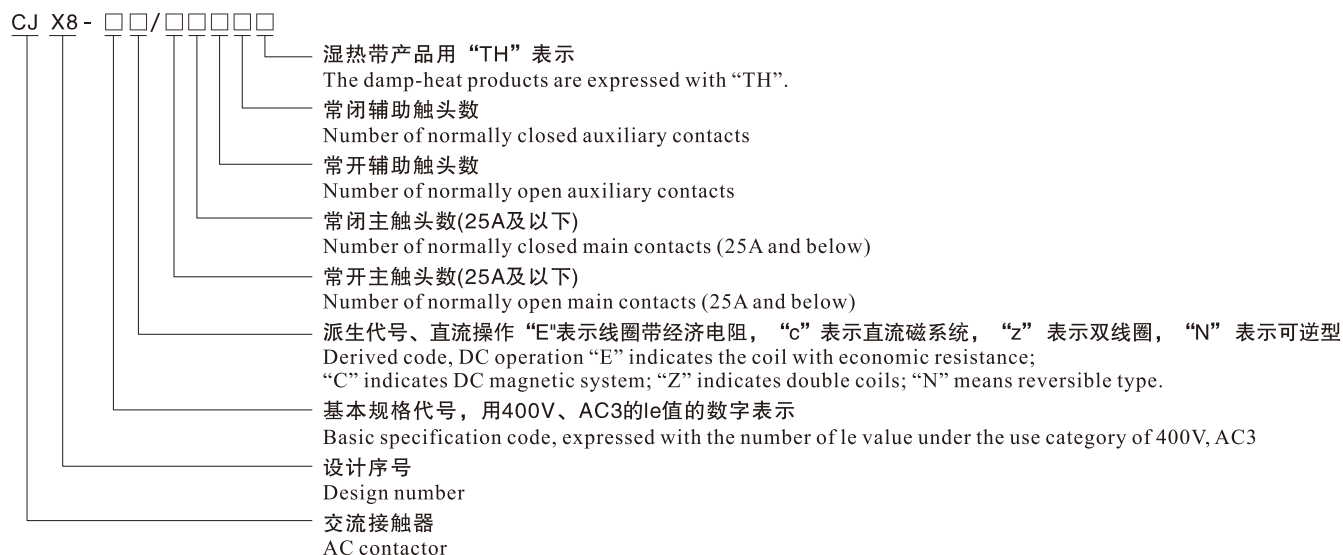


概述 / Overview

CJX8 (B) 系列交流接触器主要用于交流50Hz或60Hz、电压至690V，额定电流至370A的电力线路中，供远距离接通与分断电力线路或频繁的控制交流电动机之用，具有失压保护作用。常与JR29系列热继电器组成电磁起动器，此时，具有过载及断相保护作用。还可加装机械联锁构成可逆式接触器。

CJX8 (B) series AC contactor is mainly used in the electric power circuits with the frequency of AC 50Hz or 60Hz, the voltage of up to 690V and the rated current of up to 370A for connecting and breaking circuits remotely or frequently controlling AC motors and providing the under-voltage protection. It often works with the JR29 series thermal relay to form the electromagnetic starter to provide overload and open-phase protection. It can also be provided with the mechanical interlocking to form a reversible contactor.

型号及含义 / Type and meaning



产品结构特点 / Structural features of the product

- ☐ CJX8-30交流接触器及以下规格为“正装式结构”，即触头系统在前面、此系统在后面(靠近安装面)，CJX8-37及以上规格为“倒装式”结构，即磁系统在前面，主触头系统在后面。
- ☐ 动触头为桥式结构。CJX8-105以上的主静触头与主接线可分离，更换触头时不必拆卸主导线。CJX8-9-25为四对触头(三对主触头、一对辅助触头或四对主触头)。CJX8-30以上动头支架上装三个动触头，不能增加主触头数。
- ☐ CJX8-9~CJX8-25交流接触器采用封闭式自然灭弧，CJX8-30-45采用铁磁片灭弧，CJX8-65以上采用铁磁栅片灭弧，各级产品均采用耐弧塑料弧罩。
- ☐ CJX8-9~CJX8-30交流接触器可快速安装在符合IEC标准35mm的安装卡轨上。本系列接触器可卡装不同型号辅助触头，增加使用的方便性(见表)。
- ☐ 该交流接触器符合IEC60947-4-1、VDE0660、NFC63-110、NBNC63158、CE117-3、BS5425、NE50012、GB14048.4-2003标准。
- ☐ AC Contactors of CJX8-30 and below adopt the “normal installation structure”, that is, the contact system is at the front, and this system is at the back (near the installation surface); CJX8-37 and above adopt the “inverted structure”, that is, the magnetic system is at the front and the main contact system is at the back.
- ☐ The moving contact is of bridge structure. For CJX8-105 and above, the main static contact can be separated from the main wiring, so it is not necessary to disassemble the main conductor when replacing the contact. For CJX8-9-25, there are four pairs of contacts (three pairs of main contacts and one pair of auxiliary contacts or four pairs of main contacts). For CJX8-30 and above, the moving contact bracket is provided with three moving contacts, and the number of main contacts cannot be increased.
- ☐ CJX8-9~CJX8-25 AC contactor adopts enclosed natural arc extinguishing. CJX8-30-45 adopts ferromagnetic sheet for arc extinguishing. CJX8-65 and above adopt ferromagnetic grid for arc extinguishing. All products adopt arc-resistant plastic arc chambers.
- ☐ CJX8-9~CJX8-30 AC contactor can be quickly installed on the 35mm installation rail conforming to IEC standards. This series of contactors can be provided with different types of auxiliary contacts to increase the convenience of use (see table).
- ☐ Executive standards: IEC60947-4-1, VDE0660, NFC63-110, NBNC63158, CE117-3, BS5425, NE50012, GB14048.4-2003

主要参数及技术性能 / Main parameters and technical performance

接触器的主要参数及技术性能指标

Main parameters and technical performance indicators of the contactor

接触器型号 Contactor type		CJX8-9	CJX8-12	CJX8-16	CJX8-25	CJX8-30	CJX8-37	CJX8-45	CJX8-65	CJX8-85	CJX8-105	CJX8-170	CJX8-250	CJX8-370
额定绝缘电压V Rated insulation voltage V		690												
约定发热电流A Conventional thermal current A		16	20	25	40	45	45	60	80	100	170	250	330	410
AC3额定工作电流(A) Rated working current of AC3(A)	400V	9	12	16	25	30	37	45	65	85	105	170	250	370
	690V	3.5	4.9	6.7	13	17.5	21	25	45	55	82	118	170	268
AC3额定控制功率(KW) Rated control power of AC3(KW)	400V	4	5.5	7.5	11	15	18.5	22	33	45	55	90	132	200
	690V	3	4	5.5	11	15	18.5	22	40	50	75	110	160	250
线圈功率(VA/W) Coil power (VA/W)	启动 Starting	60/50	60/50	60/50	85/65	85/65	175/125	175/125	270/130	270/130	510/280	750/460	1100/600	1900/850
	吸持 Holding	9/2.2	9/2.2	9/2.2	10/3	10/3	22/5	22/5	30/8	30/8	32/9	60/15	66/16	100/27
线圈电压(V) Coil voltage V	交流 AC	24、36、48、110、127、230、400、415												
	直流 DC	24、48、110、220												
可配用的辅助触头型号及数量 Type and number of auxiliary contacts available		(0~4个) CA7					(0~4个) CA7					(0~4个) CA11		

外形及安装尺寸 / Outline and installation dimensions

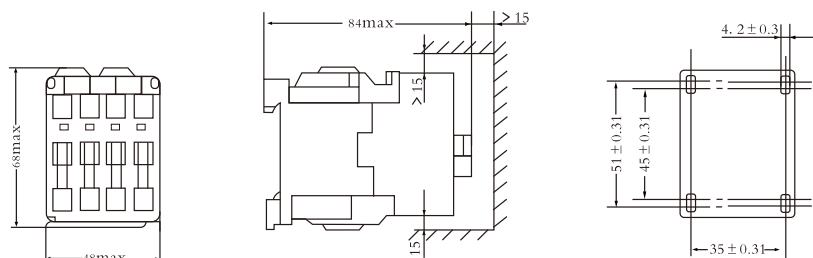


图1 CJX8-16外形及安装尺寸

Fig. 1 Outline and installation dimensions of CJX8-16

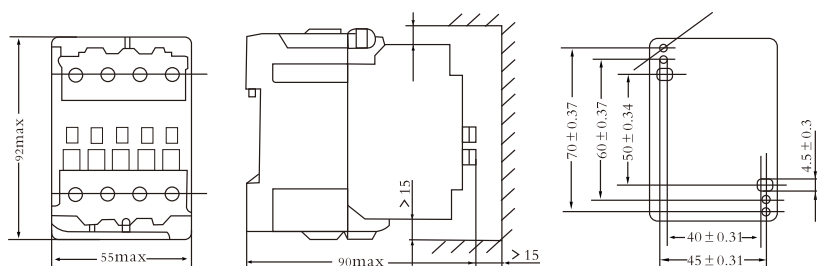


图2 CJX8-25外形及安装尺寸

Fig. 2 Outline and installation dimensions of CJX8-25

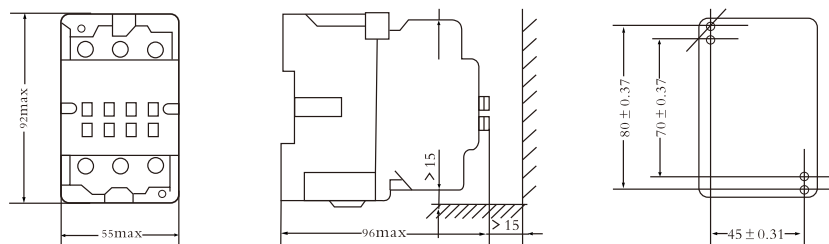


图3 CJX8-30外形及安装尺寸

Fig. 3 Outline and installation dimensions of CJX8-30

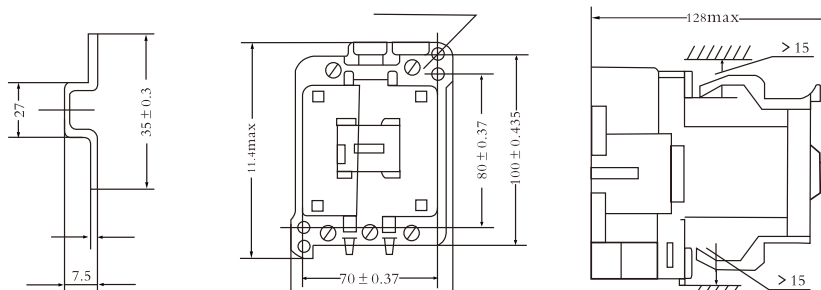


图4 CJX8-9~30用安装导轨

Fig. 4 Installation rail for CJX8-9~30

图5 CJX8-37~45外形及安装尺寸

Fig. 5 Outline and installation dimensions of CJX8-37~45

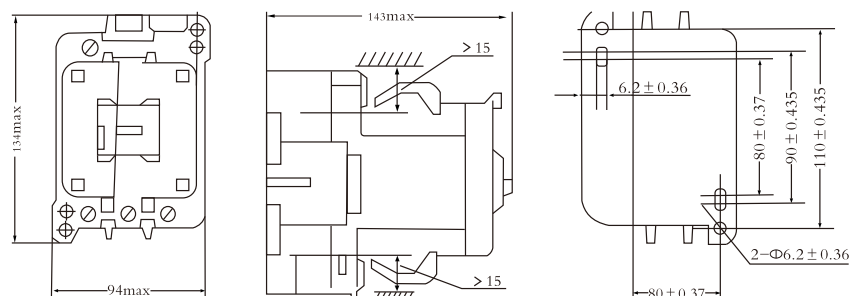


图6 CJX8-65~85外形及安装尺寸

Fig. 6 Outline and installation dimensions of CJX8-65~85

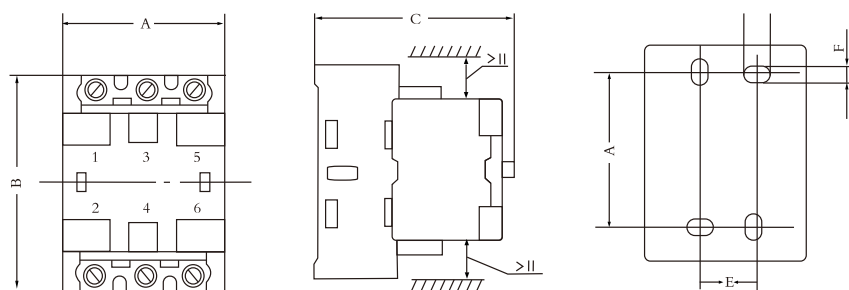


图7 CJX8-105~370外形及安装尺寸 (见表)

Fig. 7 Outline and installation dimensions of CJX8-105~370 (see table)

型号Type	A	B	C	D	E	F	G	H
CJX8-105	118max	154max	137max	140 ± 0.5	35 ± 0.31	$\Phi 6.5 \pm 0.18$	$\Phi 6.5 \pm 0.2$	≥ 15
CJX8-170	134max	165max	152max	150 ± 0.5	40 ± 0.31	6 ± 0.3	7.5 ± 0.36	≥ 15
CJX8-250	166max	206max	192max	190 ± 0.575	50 ± 0.31	7 ± 0.29	8.5 ± 0.29	≥ 15
CJX8-370	202max	252max	221max	220 ± 0.575	60 ± 0.31	7 ± 0.29	8.5 ± 0.29	≥ 15



概述 / Overview

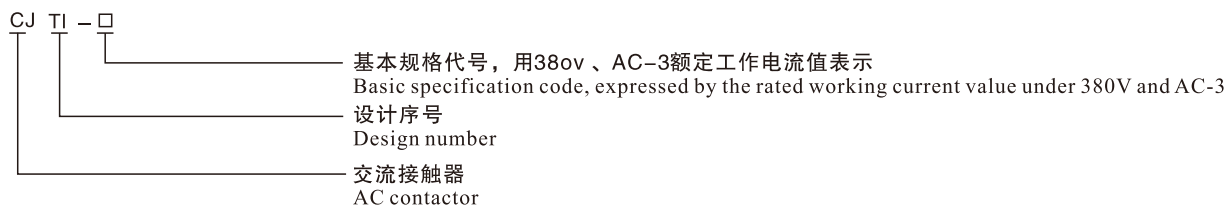
本系列交流接触器主要用于交流50Hz、额定工作电压最高至690V，AC-3使用类别下，380V时的额定工作电流至150A、690V时的额定工作电流至100A的电力系统中，供远距离接通和分断电路或频繁地起动和控制交流电动机的运转。可与适当的热过载继电器或电子式保护装置组成电磁起动器，以保护可能发生过载的电路。

产品符合GB14048.4和IEC60947-4-1等标准。

This series of AC contactor is mainly used in the electric power systems with the frequency of AC 50Hz, the rated working voltage of up to 690V, and the rated working current of up to 150A under 380V and of up to 100A under 690V under the use category of AC-3 for remotely connecting and breaking circuits and frequently starting and controlling AC motors. It can work with the appropriate thermal overload relay or electronic protection device to form the electromagnetic starter to protect the circuits that may be overloaded.

Executive standards: GB/T 14048.4-2020 and IEC 60947-4-1, etc.

型号及含义 / Type and meaning



正常工作条件和安装条件/ Normal working conditions and installation conditions

- ☐ 安装地点的海拔不超过2000m;
- ☐ 周围空气温度上限值不超过+40℃，下限值不低于-5℃;
- ☐ 安装地点的空气相对湿度在最高温度为+40℃时不超过50%，在较低温度下可以有较高的相对湿度，最湿月的月平均最低温度不超过+20℃，该月的平均最大相对湿度不超过90%。由于温度变化发生在产品上的凝露情况必须采取措施;
- ☐ 与垂直面的安装倾斜不超过±5°;
- ☐ 污染等级:3级;
- ☐ 在无显著摇动、冲击和振动的地方。
- ☐ The altitude of the installation site should not exceed 2000m;
- ☐ The ambient air temperature should not be higher than +40℃ and not be lower than -5℃;
- ☐ When the highest temperature is +40℃, the relative humidity of the air on the installation site should not be higher than 50%; A higher relative humidity is allowed at a lower temperature; In the wettest month, the monthly average minimum temperature should not exceed +20℃, and the average maximum relative humidity should not exceed 90%. Measures should be taken for condensation on the product due to temperature change;
- ☐ The inclination between the installation surface and the vertical plane should not exceed ±5°;
- ☐ Pollution level: level 3;
- ☐ The product should be installed in a place without obvious shaking, impact and vibration.

产品结构特点 / Structural features of the product

CJT1系列交流接触器(以下简称接触器)是在原CJ10系列交流接触器的基础上改进设计的CJT1新产品。它能替代被淘汰的CJ10系列交流接触器。

接触器的外形和安装尺寸保持与原CJ10系列完全相同,对产品的触头和灭弧系统进行了较大改进,使接触器的最高额定工作电压380V提高到690V,把陶土弧罩改为DMC塑料的灭弧罩,并加灭弧片。同时改进触头结构设计,从而达到提高灭弧性能、增加触头寿命、缩小飞弧距离、减轻产品重量的效果,并消除了陶土弧罩容易破损的弊病。

CJT1 series AC contactor (hereinafter referred to as the contactor) is a new CJ10 product which is improved and designed on the basis of the original CJ10 series AC contactor.

It can replace the obsolete CJ10 series AC contactor. With same outline and installation dimension as the original CJ 10 system, the contactor has the greatly improved contact and arc extinguishing system so that its highest rated working voltage is increased from 380V to 690V; it has a DMC plastic arc extinguishing chamber replacing the clay one and is provided with the arc extinguishing piece; it is provided a improved contact structure, which improves the arc extinguishing performance, prolongs the contact life, reduces the flashover distance and the product weight, and eliminates the problem that the clay chamber is damaged easily.

主要参数及技术性能 / Main parameters and technical performance

接触器主电路的基本参数见表1。

接触器的吸引线圈在其额定控制电源电压 U_s 的85%~110%范围内能正常工作

For the basic parameters of the main circuit of the contactor, please refer to Table 1.

The sucking coil of the contactor can work normally within the range of 85%~110% of its rated control power supply voltage U_s .

产品型号 Product type	CJT1-10	CJT1-20	CJT1-40	CJT1-60	CJT1-100	CJT1-150
额定绝缘电压和工作电压v Rated insulation voltage and working voltage V	380V					
额定工作电流(AC-1-AC-4,380V) Rated working current (AC-1-AC-4, 380V)	10	20	40	60	100	150
控制功率kw Control power kw	2.2	5.8	11	17	28	43
	4	10	20	30	50	75
每小时操作循环数次/h Number of operating cycles per hour times/h	AC-1.AC-为600.AC-2,AC-4为300,CJT1-150AC-4为120					
电寿命万次 Electrical endurance 10,000 times	60					
	2			1		0.6
机械寿命万次 Mechanical endurance 10,000 times	常开 常闭 300					
辅助触头 Auxiliary contact	2常开 2常闭 AC-150 180VA: DC-13 60W lth:5A					
配用熔断器 Matched fuse	RT16-20	RT16-50	RT16-80	RT16-160	RT16-250	RT16-315
线圈消耗功率vA Coil power consumption vA	65	140	230	485	760	950
	11	22	32	95	105	110

外形及安装尺寸 / Outline and installation dimensions

接触器的外形及安装尺寸见图1、图2、图3和表2。

接触器采用3个螺钉固定安装在垂直的平面上，其倾斜度不得超过 $\pm 5^\circ$ 。

For the outline and installation dimensions of the contactor, please refer to Figs. 1, 2 and 3 and Table 2.

The contactor is fixed and installed on a vertical plane with 3 screws, and its inclination should not exceed $\pm 5^\circ$.

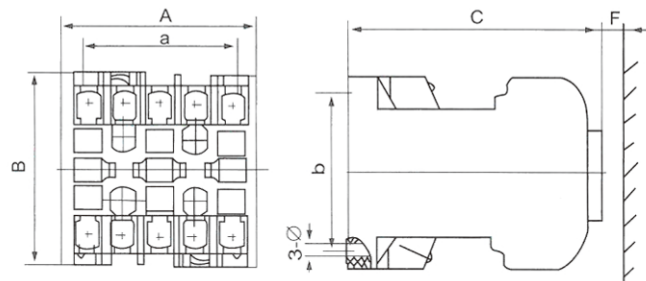
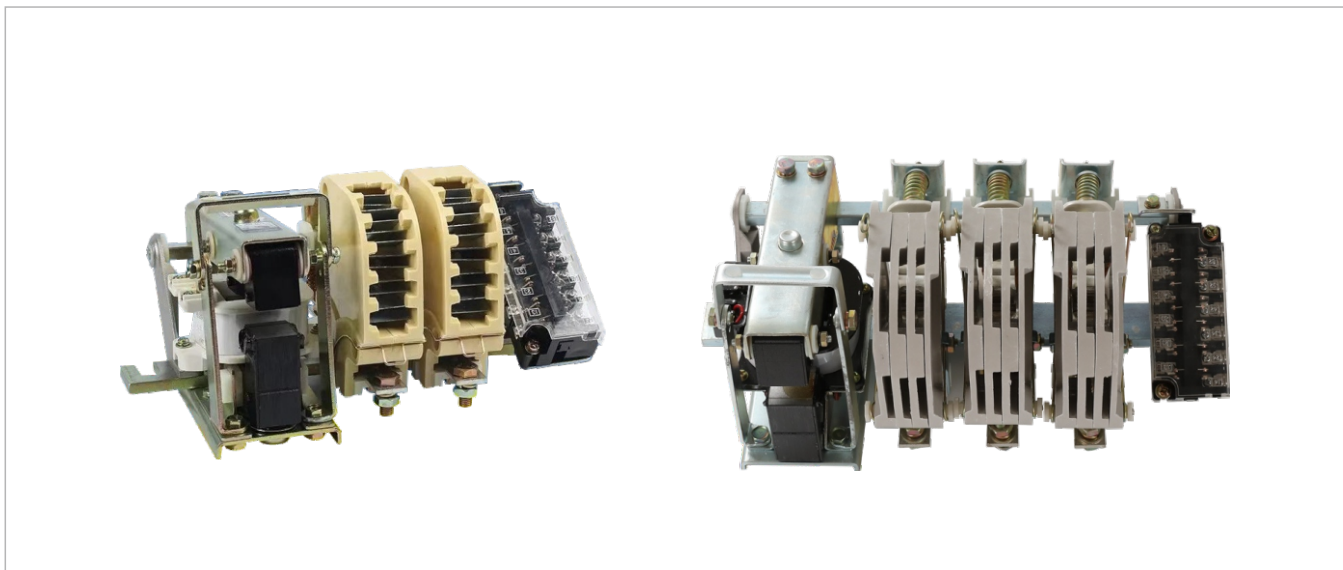


图1 CJT1-10 外形及安装尺寸

Fig. 1 Outline and installation dimensions of CJT1-10

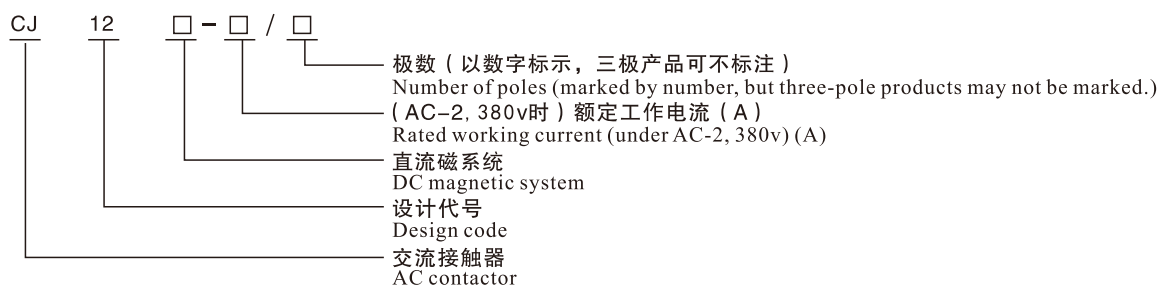


概述 / Overview

CJ12系列及派生的CJ12Z系列交流接触器，主要用于交流50Hz、额定工作电压至380V、额定工作电流至600A的电力线路中，供冶金、轧钢企业起重机等的电气设备中，作远距离接通和分断电路，并作为交流电动机频繁地起动、停止、反向和反接之用。

CJ12 series and derived CJ12Z series AC contactors are mainly used in the electric power circuits with the frequency of AC 50Hz, the rated working voltage of up to 380V and the rated working current of up to 600A for remote connection and breaking of circuits in electrical equipment such as cranes in metallurgical and steel rolling enterprises, and for frequent starting, stopping, reversing and reverse connection of AC motors.

型号及含义 / Type and meaning



正常工作条件和安装条件/ Normal working conditions and installation conditions

- ☐ 周围空气温度为：-5℃~+40℃，24小时内其平均值不超过+35℃。
- ☐ 海拔高度：不超过2000m。
- ☐ 大气条件：最高温度为+40℃时，空气相对湿度不超过50%；在较低温度下可以允许有较高的湿度，例如20℃时达90%。对由于温度变化偶尔产生的凝露应采取特殊的措施。
- ☐ 污染等级：3级。
- ☐ 安装类别：Ⅱ类。
- ☐ The ambient air temperature should be -5℃ ~+40℃, with the average temperature of no higher than +35℃ within 24 hours.
- ☐ Altitude: not higher than 2000m.
- ☐ Atmospheric conditions: when the highest temperature is +40℃, the relative humidity of the air should not be higher than 50%; A higher relative humidity is allowed at a lower temperature, such as 90% under 20℃. Special measures should be taken for occasional condensation due to temperature change;
- ☐ Pollution level: level 3.
- ☐ Installation category: category II;

- ☐ 安装条件：安装面与垂直面倾斜度不大于 $\pm 5^\circ$ 。
☐ 冲击振动：产品应安装和使用在无显著摇动、冲击和振动的地方。
☐ 技术参数与性能(见表1)；
☐ 接触器适用于下述工作制；
☐ 8小时工作制；
☐ 断续周期工作制，负载因数为40%(4、5极接触器仅适用于此工作制)；
☐ 短时工作制；
☐ 吸引线圈规格：交流：50Hz：127V、220V、380V；
 直流：110V、220V；
☐ 动作特性：吸合电压：(85%~110%)Us；
 释放电压：交流(20%~75%)Us，直流(10%~75%)Us。

- ☐ Installation condition: the inclination between the installation surface and the vertical plane should not exceed $\pm 5^\circ$.
☐ Impact vibration: the product should be installed and used in a place without obvious shaking, impact and vibration.
☐ Technical parameters and performance (see Table 1);
☐ Contactor applies to the following working systems:
☐ 8-hour working system;
☐ Intermittent periodic working system, with a load factor of 40% (4-pole and 5-pole contactors are only applicable to this working system);
☐ Short-time working system;
☐ Sucking coil specifications: AC: 50Hz: 127V, 220V, 380V; DC: 110V, 220V;
☐ Action characteristics: pull-in voltage: (85%-110%) Us;
 release voltage: AC (20%~75%)Us, DC (10%~75%)Us.

主要参数及技术性能 /Main parameters and technical performance

型号	额定绝缘 工作电压 Rated insulation and working voltage	约定自由 空气发热 电流(A) Conventional free air thermal current (A)	额定工作电流(A) Rated working current (A)		机械寿 命10次 Mechanical endurance 10 times	电寿命 (4C-2) 10次 Electrical endurance (4C-2) 10 times	每小时 操作 循环数 Number of operating cycles per hour	辅助触头					Type of matched fuse
			AC-2	AC-4				控制容量 Control capacity	约定自由空气 发热电流(A) Auxiliary contact Conventional free air thermal current (A)	数量 Number			
C12-100	380	100	100	100	300	15	600	交流380V 100VA 直流220V 90W AC 380V 100VA DC 220V 90W	10	常开 open	常闭 closed	RT16-250	
C12-150	380	150	150	150	300	15	600			2	4	RT16-315	
C12-250	380	250	250	250	300	15	600			3	3	RT16-400	
C12-400	380	400	400	400	100	10	300			4	2	RT16-500	
C12-600	380	600	600	600	100	10	300			5	1	RT16-630	

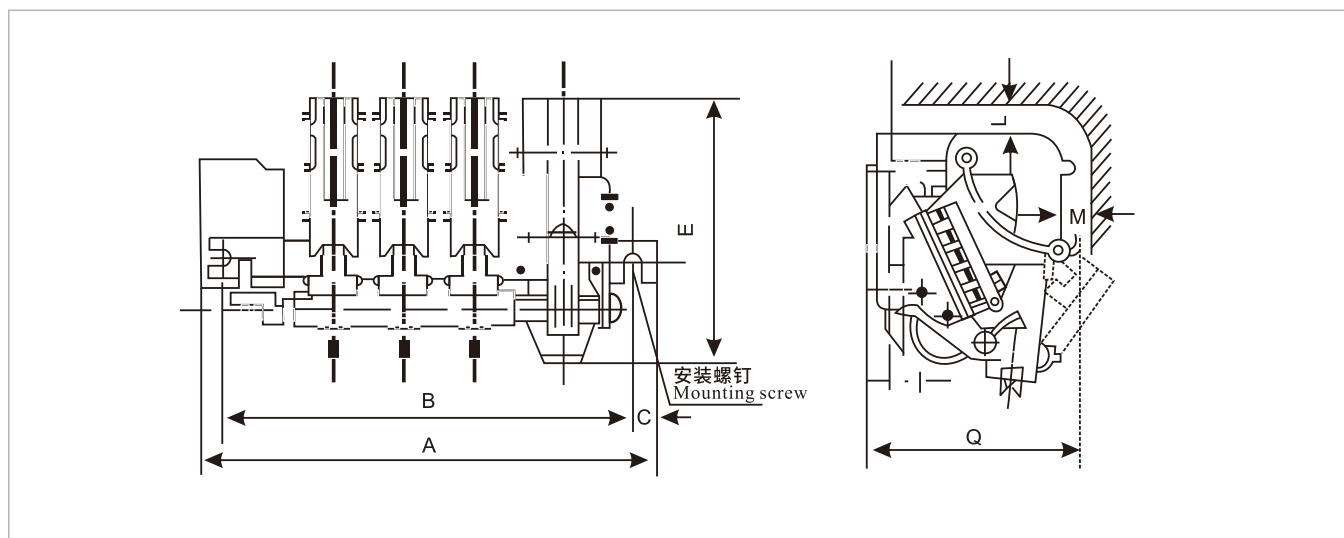
- 注：1、机械寿命：二极产品应不少于1x10次，四、五极产品应不少于1x10次；
 2、电寿命：三极产品按AC-3和AC-4使用类别以及二、四、五极产品按AC-2使用类别的电寿命指标由供需双方另行商定；
 3、CJ12Z系列直流控制交流接触器最大电流规格至400A，且该系列直流控制交流接触器产品本体已占用一对常闭辅助触头。

- Notes: 1. Mechanical endurance: no less than 1×10 times for two-pole products and no less than 1×10 times for four-pole and five-pole products;
 2. Electrical endurance: separately agreed by the supplier and the buyer according to the indicators of electrical endurance of three-pole products for the use categories of AC-3 and AC-4 and of two-pole, four-pole and five-pole products for the use category of AC-2;
 3. For CJ12Z series DC controlled AC contactor, the maximum current specification reaches 400A, and the product body has occupied a pair of normally closed auxiliary contacts.

产品结构特点 / Structural features of the product

- ☐ CJ12系列交流接触器为开启式，其结构为条架平面布置，电磁系统居右，主触头居中，辅助触头居左，并装有可转动的停档，整个布置便于监视和维修。
- ☐ 接触器的磁系统由“U”型动静铁心及线圈组成，动静铁心均装有缓冲装置，从而提高了产品寿命。
- ☐ CJ12Z为直流磁系统。
- ☐ 接触器的主触头系统为单断点转动式结构，配有陶土纵缝式灭弧罩，具有良好的灭弧性能。
- ☐ 辅助触头为桥式双断点，有透明防护罩，其常开常闭触头数可按表1进行组合。
- ☐ 整个接触器的易损零件都具有拆装简便和易于维护检修等特点。
- ☐ CJ12 series AC contactor is of open type, with the plane layout of bars. With electromagnetic system in the right, main contact in the center, and auxiliary contact in the left, it is provided with the rotatable stop gear for easy monitoring and repair.
- ☐ The magnetic system of the contactor consists of U-shaped moving and static iron cores and coil. Both moving and static iron cores are equipped with buffer devices, which prolongs the service life of the product.
- ☐ For CJ12Z, the DC magnetic system is adopted.
- ☐ The main contact system of the contactor adopts a single breakpoint rotating structure, and is equipped with clay arc extinguishing chamber with longitudinal slit, which has good arc extinguishing performance.
- ☐ The auxiliary contact adopts bridge-type double breakpoints and is provided with the transparent protective cover. The number of normally open and normally closed contacts can be combined according to Table 1.
- ☐ The vulnerable parts of the whole contactor are characterized by simple disassembly and easy maintenance.

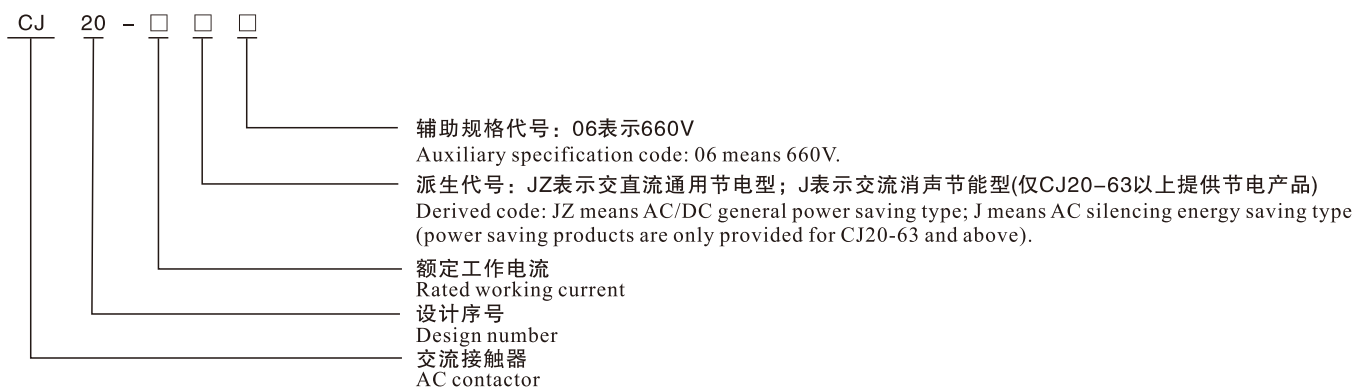
外形及安装尺寸 / Outline and installation dimensions



额定工作电流(A) Rated working current (A)	安装尺寸 Installation dimensions				C	最大外形尺寸 Maximum outline dimensions						安全区域 Safe area		安装螺钉 Mounting screw
	B					A(总宽) A (total width)				E (总高) (Total height)	Q (总深) (Total depth)	L	M	
	二级 Level II	二级 Level II	二级 Level II	二级 Level II		二级 Level II	三级 Level III	四级 Level IV	五级 Level V					
100	274	330	386	442		316	372	430	486	194	195	80	50	M10
150	307	370	433	496		346	409	473	537	219	207	70	70	M10
250	335	405	475	545		374	445	516	586	255	230	70	80	M10
400	360	440	520	600		420	500	581	663	296	274	100	80	M12
600	404	500	596	692		469	566	664	760	349	334	120	150	M16



型号及含义 / Type and meaning



正常工作条件与安装条件 / Normal working conditions and installation conditions

- ☐ 周围空气温度为: -5°C ~ $+40^{\circ}\text{C}$; , 24小时内其平均值不超过 $+35^{\circ}\text{C}$;
- ☐ 海拔高度: 不超过2000m;
- ☐ 大气条件: 最高温度 $+40^{\circ}\text{C}$ 时, 空气的相对湿度不超过50%; 在较低温度下可以允许有较高的相对湿度, 例如 20°C : 时达90%, 对由于温度变化偶尔产生的凝露应采取特殊的措施;
- ☐ 污染等级: 3级;
- ☐ 安装类别: III类;
- ☐ 安装条件: 安装面与垂直面倾斜度不大于 $\pm 5^{\circ}$ 。
- ☐ 冲击振动: 产品应安装和使用在无显著摇动、冲击和振动的地方。
- ☐ The ambient air temperature should be -5°C ~ $+40^{\circ}\text{C}$, with the average temperature of no higher than $+35^{\circ}\text{C}$ within 24 hours.
- ☐ Altitude: not higher than 2000m;
- ☐ Atmospheric conditions: when the highest temperature is $+40^{\circ}\text{C}$, the relative humidity of the air should not be higher than 50%; A higher relative humidity is allowed at a lower temperature, such as 90% under 20°C . Special measures should be taken for occasional condensation due to temperature change;
- ☐ Pollution level: level 3;
- ☐ Installation category: category III;
- ☐ Installation condition: the inclination between the installation surface and the vertical plane should not exceed $\pm 5^{\circ}$;
- ☐ Impact vibration: the product should be installed and used in a place without obvious shaking, impact and vibration.

结构特点 / Structural features

接触器的触头系统为直动式.双断点布置, CJ20-40A及以上辅助触头作为独立组件安装在主触头的两侧, 在电气上为分开的;

CJ20-10-25A产品既可用螺钉安装, 也可用35mm标准卡轨安装;

CJ20-10-16A产品采用双断点简单开断灭弧室, 其余均采用塑料栅片灭弧罩, 具有分断能力高、可靠性高的优点;

CJ20-63~630节电产品具有直流通用节电模块, 不仅可以派生消声节能产品或直流操作产品, 而且不占用辅助触头, 从而大大提高了产品的可靠性和寿命。

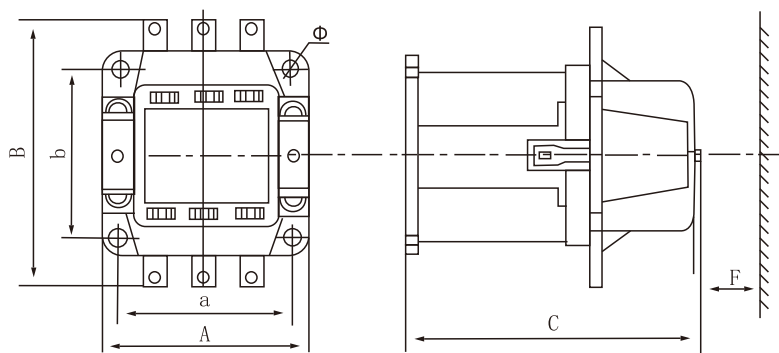
The contact system of the contactor is direct-acting with double breakpoints. For CJ20-40A and above, the auxiliary contacts are installed on both sides of the main contact as independent components, which are electrically separated;

CJ20-10-25A products may be installed by screws or by 35mm standard card track.

CJ20-10-16A products have double breakpoints to simply break the arc extinguishing chamber, and the rest adopt the plastic grid arc extinguishing chamber, which has the advantages of high breaking capacity and high reliability;

CJ20-63~630 power saving products have the DC general power saving module, which not only can derive silencing energy saving products or DC operated products, but also do not occupy auxiliary contacts, thus greatly improving the reliability and life of products.

外形安装尺寸 / Shape and installation dimensions (mm)



型号Type	A	B	C	a	b	Φ	l	F _{min}	重量 kg
CJ20-10	45	67.5	107	35 ± 0.31	55 ± 0.37	5 ± 0.3	7.5 ± 0.19	10	0.35
CJ20-16	45	73	116.5	35 ± 0.31	55 ± 0.37	5 ± 0.3	7.5 ± 0.29	10	0.43
CJ20-25	52.5	90.5	122	40 ± 0.31	80 ± 0.37	5 ± 0.3	7.5 ± 0.29	15	0.67
CJ20-40	86.5	111.5	118	70 ± 0.37	80 ± 0.37	5 ± 0.3	15 ± 0.19	30	0.96
CJ20-63	116	142	146	100 ± 0.4	90 ± 0.4	5.8 ± 0.3	10 ± 0.29	60	2.9
CJ20-100	120 ± 1.75	145 ± 2	150 ± 3.15	108 ± 0.435	92 ± 0.435	7 ± 0.58	15 ± 0.38	70	3
CJ20-160	146	187	178	130 ± 0.5	130 ± 0.5	9 ± 0.58	15.5 ± 0.35	80	5.5
CJ20-250	190	235	230	160 ± 0.5	150 ± 0.5	9 ± 0.58	17 ± 0.35	100	10.5
CJ20-400	190	235	230	160 ± 0.5	150 ± 0.5	9 ± 0.58	17 ± 0.35	100	10
CJ20-630	245	294	272	210 ± 0.575	180 ± 0.5	11 ± 0.7	11 ± 0.7	120	21.5
CJ20-800-1000	245	294	287	210 ± 0.575	180 ± 0.5	11 ± 0.7	11 ± 0.7	120	21.5

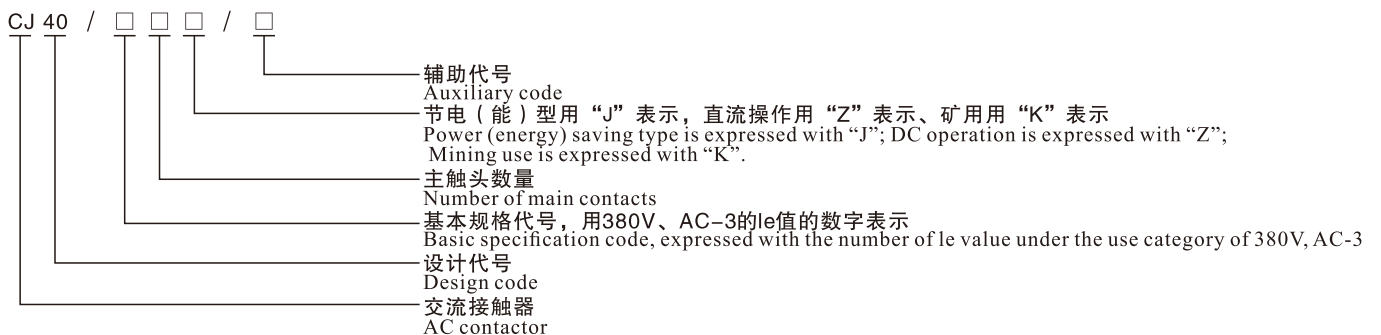


概述 / Overview

C40系列交流接触器主要用于交流50Hz(或60Hz),额定工作电压至690V(或1140V),额定工作电流至1000A的电力线路中接通与分断电路,并可与适当的热继电器或电子式保护装置组合成电动机启动器,以保护可能发生过载的电路。
产品符合GB14048.4和IEC60947-4-1等标准。

CJ40 series AC contactor is mainly used in the electric power circuits with the frequency of AC 50Hz (or 60Hz), the rated working voltage of up to 690V (or 1140V) and the rated working current of up to 1000A for connecting and breaking circuits, and working with the appropriate thermal relay or electronic protection device to form the motor starter to protect the circuits that may be overloaded.
Executive standards: GB14048.4 and IEC60947-4-1, etc.

型号及含义 / Type and meaning



辅助代号共由五部分组成, 根据需要按以下顺序选用:

第一部分用字母“Y”表示一般型, 可以不写出“N”表示可逆型;

第二部分用1位数字表示主电路极数: 3、4分别表示3极、4极, 3可以不写出;

第三部分用2位数字表示最高额定工作电压: “06”表示690V, 可以不写出。“11”表示1140;

第四部分表示额定控制电源电压, 用字母“AC”表示交流50Hz, “DC”表示直流, 字母后用额定控制电源电压的数值表示, 但“AC380”可以不写出;

第五部分用字母“F”和2位数字表示辅助触头种类及数量, 前一位数字表示常开辅助触头对数, 后一位数字表示常闭辅助触头对数, 但“42”可以不写出。

注: 该项包括两部分: 主触头数量、辅助触头数量。用数字分别表示, 如下简图所示:

(-□□-□□)表示: 一主触常开数、主触常闭数一辅触常开数、辅触常闭数。

The auxiliary code is composed of 5 parts, which are selected in the following order as needed:

In the first part, “Y” means general type; “N” (can be omitted) means reversible type;

In the second part, 1 digit is used to indicate the number of poles of the main circuit: 3 and 4 respectively indicate 3 and 4 poles, and 3 can be omitted;

In the third part, 2 digits are used to indicate the highest rated working voltage: “06” (which can be omitted) indicates 690V; “11” indicates 1140V;

The fourth part indicates the rated control power supply voltage, with letters “AC” indicating alternating current 50Hz and “DC” indicating direct current. The value of the rated control power supply voltage is behind the letters, but “AC380” can be omitted;

In the fifth part, the letter “F” and two digits are used together to indicate the type and number of auxiliary contacts, of which the first digit indicates the number of pairs of normally open auxiliary contacts and the second digit indicates the number of pairs of normally closed auxiliary contacts, but “42” can be omitted.

Note: This item includes two parts, i.e., the number of main contacts and the number of auxiliary contacts, which are indicated by number respectively, as shown in the diagram below:

(-□□-□□) indicates: - number of normally open main contacts, number of normally closed main contacts - number of normally open auxiliary contacts, number of normally closed auxiliary contacts

正常工作条件和安装条件/ Normal working conditions and installation conditions

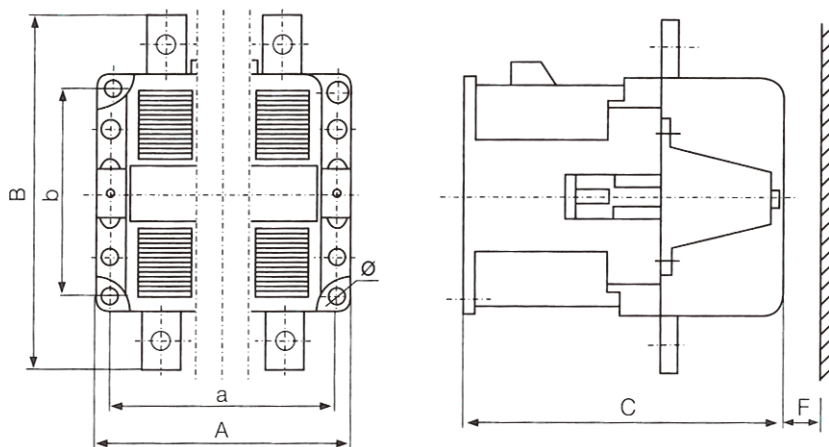
- ☐ 安装地点的海拔不超过2000m;
- ☐ 周围空气温度上限值不超过+40℃，下限值不低于-5℃;
- ☐ 安装地点的空气相对湿度在最高温度为+40℃时不超过50%，在较低温度下可以有较高的相对湿度，最湿月的月平均最低温度不超过+20℃，该月的平均最大相对湿度不超过90%。由于温度变化发生在产品上的凝露情况必须采取措施；
- ☐ 与垂直面的安装倾斜不超过 $\pm 5^\circ$ ；
- ☐ 污染等级：3级；
- ☐ 在无显著摇动、冲击和振动的地方。
- ☐ The altitude of the installation site should not exceed 2000m;
- ☐ The ambient air temperature should not be higher than +40℃ and not be lower than -5℃;
- ☐ When the highest temperature is +40℃, the relative humidity of the air on the installation site should not be higher than 50%; A higher relative humidity is allowed at a lower temperature; In the wettest month, the monthly average minimum temperature should not exceed +20℃, and the average maximum relative humidity should not exceed 90%. Measures should be taken for condensation on the product due to temperature change;
- ☐ The inclination between the installation surface and the vertical plane should not exceed $\pm 5^\circ$;
- ☐ Pollution level: level 3;
- ☐ The product should be installed in a place without obvious shaking, impact and vibration.

产品结构特点 / Structural features of the product

CJ40-63~1000交流接触器为开启式正装直动式双断点结构，辅助触头作为独立组件安装在主触头的两侧，在电气上为分开的。铁芯为“U”型结构永久性气隙。底座为铝合金压铸(CJ40-630A及以上)，螺钉安装；而CJ40-63~125底座为不饱和聚酯玻璃纤维增强模塑料，安装方式可以螺钉安装，也可以用“TH75”导轨安装。灭弧罩采用耐弧塑料加铁质栅片组成，具有分断能力高，可靠性高等优点。

CJ40-63~1000 AC contactor adopts the structure of open type, normal installation, direct acting and double breakpoints. The auxiliary contacts are installed on both sides of the main contact as independent components, which are electrically separated; The iron core is a U-shaped structure with the permanent air gap. The base is made of aluminum alloy die-casting (for CJ40-630A and above), which is installed by screws; But, the base of CJ40-63~125 is made of unsaturated polyester glass fiber reinforced molding compound, which may be installed by screws or by “TH75” guide rail. With the advantages of high breaking capacity and high reliability, etc., the arc extinguishing chamber is made of arc resistant plastic and iron grid.

外形及安装尺寸 / Outline and installation dimensions



CJ40-63~1000交流接触器外形及安装尺寸

单位:MM

Outline and installation dimensions of CJ40-63~1000 AC contactor

产品型号 Product type	外形尺寸Max Outline dimensions (Max)			安装尺寸 Installation dimensions			安装轨 Installation rail	安装区域F min Installation area F min	
	A	B	C	a	b	Φ		380V	660V
CJ40-63-125	116	143	154	100	90	5.8	Th75	20	40
CJ40-160-200	146	186	184	130	130	9	-	30	40
CJ40-250								40	60
CJ40-315-400	190	235	230	160	150	9		40	60
CJ40-500								50	70
CJ40-630-1250	245	345	288	210	180	11		0	0
CJ40-63/4~125/4	143	143	154	128	90	5.8	Th75	20	40
CJ40-63/4~200/4	187	186	184	170	130	9	-	30	40
CJ40-250-4								40	60
CJ40-315/4~400/4	236	235	230	216	150	9		40	60
CJ40-500/4								50	70

主要参数及技术性能 / Main parameters and technical performance

型号规格 Type and specifications	框架代号 Frame code	U V	th A	断续周期工作制下的IeA IeA under intermittent periodic working system				AC-3下的Pe kW Pe kW under AC-3	不同断工作制下的IeA IeA under different intermittent working systems
				AC-1	AC-2	AC-3	AC-4		
C40-63	125	690	80	80	63	63	63	18.5	80
								30	
CJ40-80									
			125	125	80	80	80		125
C140-100								55	
								30	
CJ40-125									
CJ40-160	250	690	250	250	160	160	160	45	250
								75	
								110	
								55	
								90	
								110	
								75	
								132	
								110	
CJ40-200									
C40-250									
CJ40-315	500	690	500	500	315	315	250	90	500
								160	
								300	
								110	
								220	
								300	
								150	
								280	
								300	
								200	
CJ40-400								335	
								475	
								250	
								450	
								475	
								360	
								550	
								570	
								375	
								600	
								630	
CJ40-630	1000	690	800	630	630	630	500	200	630
								335	
								475	
								250	
								450	
				800	800	800	500	475	800
								360	
								550	
								570	
								375	
			1250	1250	1250	1250	1250	600	1250
								630	
			1140	125	125	40	40	55	125
								110	
								220	
								500	
								600	
			1000	1000	1000	400	400		1000
C40-125/11	1250	1140	1140	125	125	40	40	55	125
C140-250/11	250		1140	250	250	80	80	110	250
C140-500/11	500		1140	500	500	160	160	220	500
CJ40-1000/11	1000		1140	1000	1000	400	400	600	1000



概述 / Overview

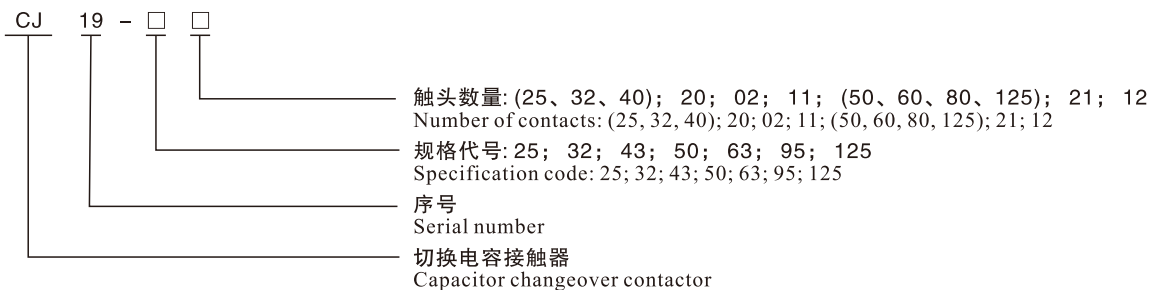
CJ19系列切换电容器接触器(以下简称接触器)主要用于交流50Hz(或60Hz)、额定工作电压至400V的电力线路中, 供低压无功功率补偿设备投入或切除低压并联电容器之用。

接触器带有抑制涌流装置, 能有效地减小合闸涌流对电容的冲击和抑制开断时的过电压。

CJ19 series capacitor changeover contactor (hereinafter referred to as the contactor) is mainly used in the electric power circuits with the frequency of AC 50Hz (or 60Hz) and the rated working voltage of up to 400V for putting the low-voltage reactive power compensation equipment into operation or cutting off the low-voltage shunt capacitors.

The contactor is equipped with the inrush current suppression device, which can effectively reduce the impact of the closing inrush current on capacitors and suppress the overvoltage during breaking.

型号及含义 / Type and meaning



注解:

1、辅助触头数盘用两位数字表示, 十位数字为常开触头的对数, 个位数字为常闭触头的对数。

2、在 AC-6b 400VAT, 各种规格代号对应的额定工作电流: 25(18A)、32(24A)、43(29A)、50(36A)、63(48A)、95(58A)、125(87A)。

Notes:

1. The number of auxiliary contacts is represented by two digits, of which the tens digit is the logarithm of normally open contacts, and the units digit is the logarithm of normally closed contacts.

2. For AC-6b 400VAT, the rated working currents corresponding to various specification codes are 25(18A) □ 32(24A) □ 43(29A) □ 50(36A) □ 63(48A) □ 95(58A) □ 125(87A).

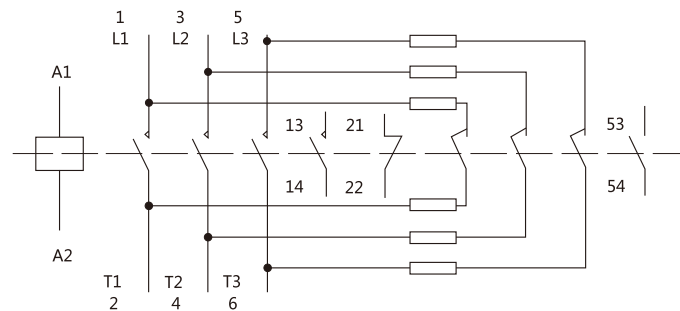
正常工作条件和安装条件/ Normal working conditions and installation conditions

- ☐ 周围空气温度不超过+40℃,且24h内的平均温度值不超过+35℃。周围空气温度的下限为-5℃;在最高温度为+40℃时,空气的相对湿度不超过50%,在较低的温度下可以允许有较高的相对湿度;
- ☐ 安装地点的海拔高度不超过2000m;
- ☐ 污染等级: 3级;
- ☐ 安装类别: II;
- ☐ 安装条件:接触器的安装面与垂直面的倾斜度不超过5°;
- ☐ 冲击与振动:安装在无显著摇动和冲动振动的地方。
- ☐ The ambient air temperature should not exceed +40℃, with the average temperature of no higher than +35℃ within 24 hours.
The lower limit of the ambient air temperature should be -5℃; When the highest temperature is +40℃, the relative humidity of the air should not be higher than 50%; A higher relative humidity is allowed at a lower temperature;
- ☐ The altitude of the installation site should not exceed 2000m;
- ☐ Pollution level: level 3;
- ☐ Installation category: category II;
- ☐ Installation condition: the inclination between the installation surface of the contactor and the vertical plane should not exceed 5°.
- ☐ Impact and vibration: the product should be installed in a place without obvious shaking, impact and vibration.

接线原理图 / Schematic diagram of wiring

CJ19系列接线原理图见图1

For the schematic diagram of wiring of CJ19 series, please refer to Fig. 1.



L1 ~ L3接电源侧, T1 ~ T3接负载侧。
L1 ~ L3 should be connected to the power supply side; T1 ~ T3 should be connected to the load side.

主要参数及技术性能 / Main parameters and technical performance

CJ19	25	32	43	63	95	115	150	170	
额定绝缘电压(Ui)V Rated insulation voltage (Ui)V	500V					690V			
额定工作电压(Ue)V Rated working voltage (Ue)V	220V/240V、380V/400V								
可控电容器容量(Qn)Kva Controllable capacitor Capacity (Qn)Kva	220V	6	9	10	15	28.8(240V)	34.5(240V)	46(240V)	52(240V)
	380V	12	18	20	30	50(400V)	60(400V)	80(400V)	90(400V)
约定自由空气发热电流Ith Conventional free air thermal current Ith	25	32	43	63	63	200	200	275	
额定工作电流(AC-6b)Ie A Rated working current (AC-6b)Ie A	17	23	29	43	43	87	115	130	
抑制涌流能力 Inrush current suppression capability	20Ie								
控制电源电压 Us V Control power supply voltage Us V	110、127、220、380								
辅助触头 Auxiliary contact	AC-15: 360VA DC-13: 33W Ith: 10A								
操作频率 次/小时 Operating frequency times /h	120								
电寿命 万次 Electrical endurance 10,000 times	10					2			
机械寿命 万次 Mechanical endurance 10,000 times	100					300			

尺寸型号 Dimensions and type	外形尺寸 Outline dimensions				安装尺寸 Installation dimensions			
	A	B	C	D	A	B	Φ	卡规 Calliper gauge
CJ19-25	76	47	125	120	35	50/60	4.5	35
CJ19-32	86	58	135	130	40	50/60		
CJ19-43	86	58	135	130	40	50/60		
CJ19-63	128	79	156	150	40	100/110	6.5	35/75
CJ19-80	128	87	160	200	40	100/110		
CJ19-95	128	87	160	200	40	100/110		

外形安装尺寸 / Shape and installation dimensions (mm)

接触器除用螺钉安装外，还可用卡轨安装。
The contactor may be installed by screws or card track.

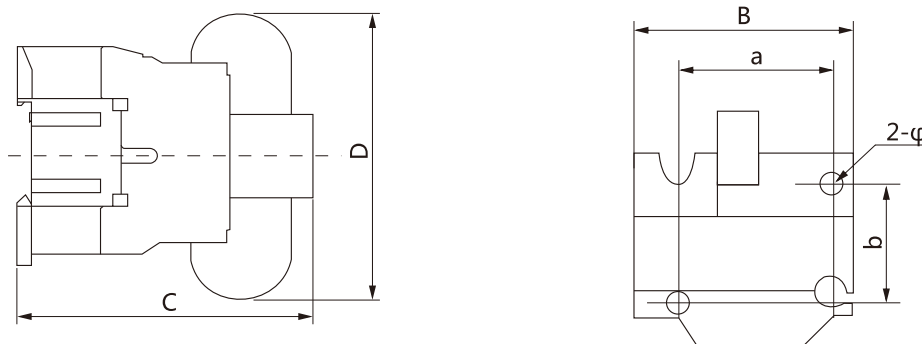


图2 CJ19-25、32、43的外形及安装尺寸图
Fig. 2 Diagram of outline and installation dimensions of CJ19-25, 32, 43